



Property Industry Foundation Brisbane Sailing Cup



FRIDAY
14 May 2021

SAILING INSTRUCTIONS (SIs)

1. RULES

- 1.1. The event is governed by the rules as defined in The Racing Rules of Sailing 2021-2024.
- 1.2. The Australian Sailing prescriptions and special regulations part 1 – Category 6 apply.
- 1.3. Boats shall keep 20m clear of ALL Aids to Navigation. A boat failing to keep outside this exclusion zone may be protested by the Race Committee. THIS IS A REQUIREMENT OF MARITIME SAFETY QLD.
- 1.4. Boats that make contact with another vessel shall immediately retire

2. CHANGES TO SAILING INSTRUCTIONS

- 2.1. Any change to the sailing instructions will be posted before 0900 on the day it will take effect, except that any change to the schedule of races will be posted by 2000 on the day before it will take effect.
- 2.2. Changes to a sailing instruction may be made on the water by display of code flag 'L'.

3. COMMUNICATIONS WITH COMPETITORS

- 3.1. Notices to competitors will be posted on the official notice board located at <https://www.rqys.com.au/sailingnoticeboard/>.
- 3.2. The race office is located at The Royal Queensland Yacht Squadron, Telephone 33968666, Email sailing@rqys.com.au .
- 3.3. On the water, the race committee intends to monitor and communicate with competitors on VHF radio channel 72.
- 3.4. While racing except in an emergency, a boat shall not make voice or data transmissions and shall not receive voice or data communication that is not available to all boats.

4. CODE OF CONDUCT

- 4.1 [DP] Competitors and support persons shall comply with reasonable requests from race officials.
- 4.2 [DP] Competitors and support persons shall handle any equipment or place advertising provided by the organizing authority with care, seamanship, in accordance with any instructions for its use and without interfering with its functionality.

5. SIGNALS MADE ASHORE

- 5.1. Signals made ashore will be displayed at the official flag pole located at the top of the Eastern Gangway of the Bill Kirby Docks.
- 5.2. When flag AP is displayed ashore, '1 minute' is replaced with 'not less than 45 minutes' in Race Signals AP.

6. SCHEDULE OF RACES

Day	Event	Time
14 May 2021	Handicaps (Start Times) Announcement	1130 hrs
	Racing	Warning Signal not before 1300 hrs
	Presentation – RQ Rigging lawn	ASAP After Racing

7. RACING AREA

- 8.1 The racing area will be Waterloo and Moreton Bays west and east of Green Island.

8. COURSES

- 8.1. The diagrams below in SI Addendum A show the course(s), including the approximate angles between legs, the order in which marks are to be passed, and the side on which each mark is to be left.
- 8.2. Courses may be shortened as per RRS32.
- 8.3. The course flag confirming the course to be sailed will be flown from the start boat. In the event that the start boat is not on station, competitors shall monitor Channel 72 for course information.

9. MARKS

- 9.1. All marks are Navigation Marks – When a navigation mark is nominated as a mark of a course it shall be left in the manner described in the SI Addendum A, otherwise all navigation marks shall be observed in the correct manner.
- 9.2. Where a navigation mark is to be rounded due consideration to the weather conditions including tidal effect shall be given.

10. THE START

- 10.1. Races will be started as follows:
 - 10.1.1 Boats shall start no earlier than their allocated start time. All times are in Brisbane EST time, syncing of your clock is recommended at <http://www.timeanddate.com/worldclock/fullscreen.html?n=47>
 - 10.1.2 The Race Officer (starter) will usually raise a start bat 10 seconds prior to the minute and lower the start baton the minute.
 - 10.1.3A sound signal will be given to any yacht starting early and therefore they are required to restart.
 - 10.1.4 This changes RRS26.
 - 10.2 All boats shall keep clear of the start line and not cross in either direction prior to their designated start time.
 - 10.3 A boat re-starting shall keep clear of a boat starting.
- 10.2. The starting line is between a staff displaying an orange flag on the signal vessel at the starboard end and an orange buoy at the port end.

- 10.3. Boats whose warning signal has not been made shall avoid the starting area during the starting sequence for other races.
- 10.4. If any part of a boat's hull is on the course side of the starting line during the two minutes before her starting signal and she is identified, the race committee will attempt to broadcast her sail number on VHF channel 72. Failure to make a broadcast or to time it accurately will not be grounds for a request for redress. This changes RRS 62.1(a).

11. THE FINISH

- 11.1. The finishing line will be between a staff displaying an orange flag on the race committee vessel and an orange buoy at the port end

12. PENALTY SYSTEM

- 12.1. For all boats rule 44.1 is changed so that the Two-Turns Penalty is replaced by the One-Turn Penalty.

13. TIME LIMITS [AND TARGET TIMES]

- 13.1. The time limit for all boats to be finished is 1700hrs.

14. HEARING REQUESTS

- 14.1. PIF is intended to be a fun and enjoyable nature and therefore there should be no reason to Protest. Competitors are encouraged to resolve their differences in a respectable manner.
- 14.2. Should an incident occur that cannot be resolved, competitors are required to lodge a protest with the Sailing Office via an email to sailing@rqys.com.au by 1600 hrs the day after the race. Protest forms are available at the sailing office and online.

15. SCORING

- 15.1. All Races
 - a. Handicap start times will be allocated to each boat on the day of the event..

16. SAFETY REGULATIONS

- 16.1. [DP] A boat that retires from a race shall notify the race committee at the first reasonable opportunity on VHF Channel 72.
- 16.2. Unless in use, no part of the anchor may project forward of the sheer line at any time whilst racing.

17. EQUIPMENT AND MEASUREMENT CHECKS

- 17.1. A boat or equipment may be inspected at any time for compliance with the class rules, notice of race and sailing instructions.

18. OFFICIAL VESSELS

- 18.1. Official vessels will be identified by displaying a black and white 'RC' flag.

19. BERTHING

- 19.1. [DP] Boats shall be kept in their assigned places while in the harbour.

20. RISK STATEMENT



- 20.1. RRS 3 states: 'The responsibility for a boat's decision to participate in a race or to continue to race is hers alone.' By participating in this event each competitor agrees and acknowledges that sailing is a potentially dangerous activity with inherent risks. These risks include strong winds and rough seas, sudden changes in weather, failure of equipment, boat handling errors, poor seamanship by other boats, loss of balance on an unstable platform and fatigue resulting in increased risk of injury. **Inherent in the sport of sailing is the risk of permanent, catastrophic injury or death by drowning, trauma, hypothermia or other causes.**

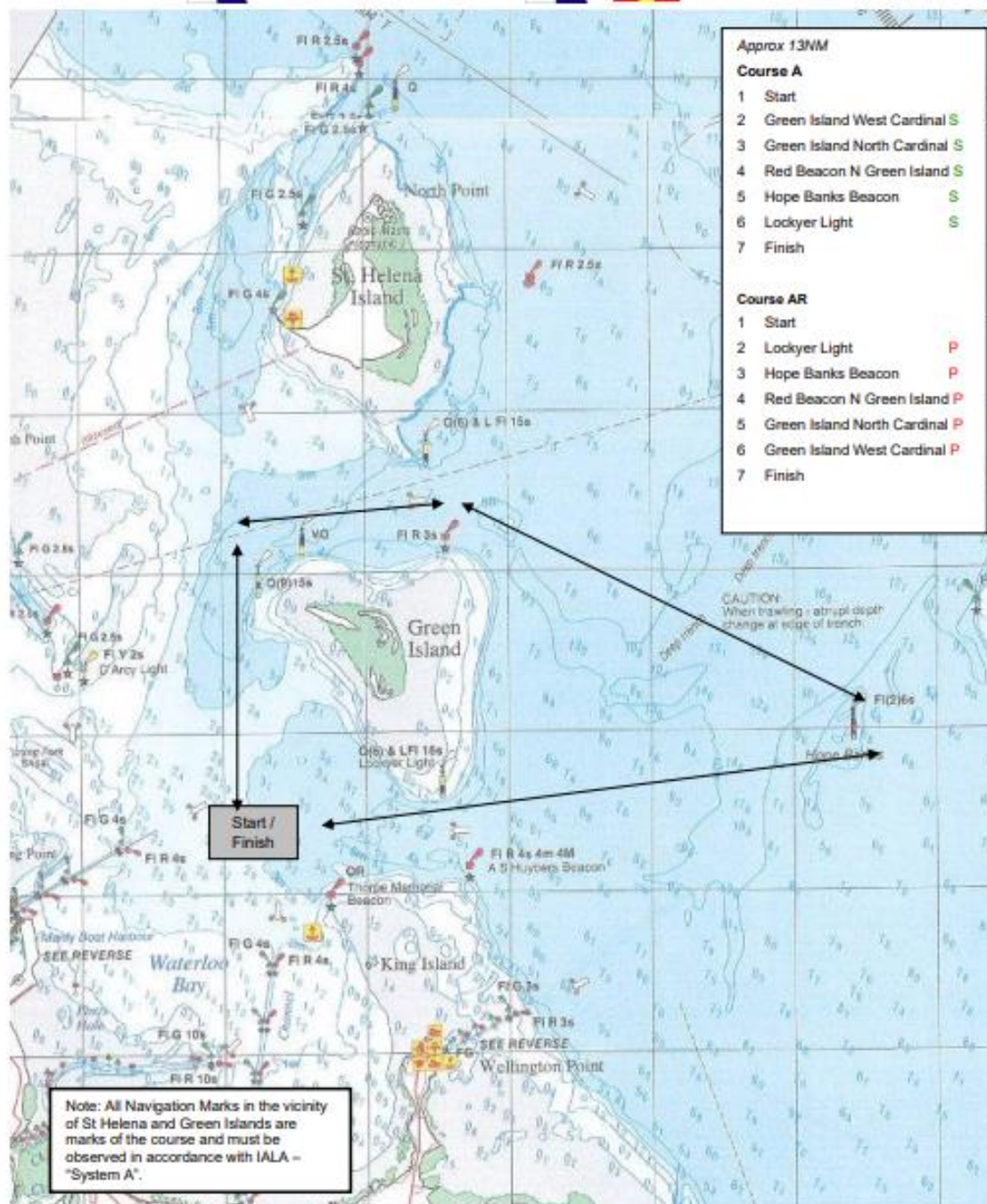
21. INSURANCE

- 21.1. Each participating boat shall be insured with valid third-party liability insurance with a minimum cover of \$10,000,000AUD per incident or the equivalent.

SI ADDENDUM A




WAGS 2020 - 2021 NOTICE OF RACE & SAILING INSTRUCTIONS The Royal Queensland Yacht Squadron (RQYS)

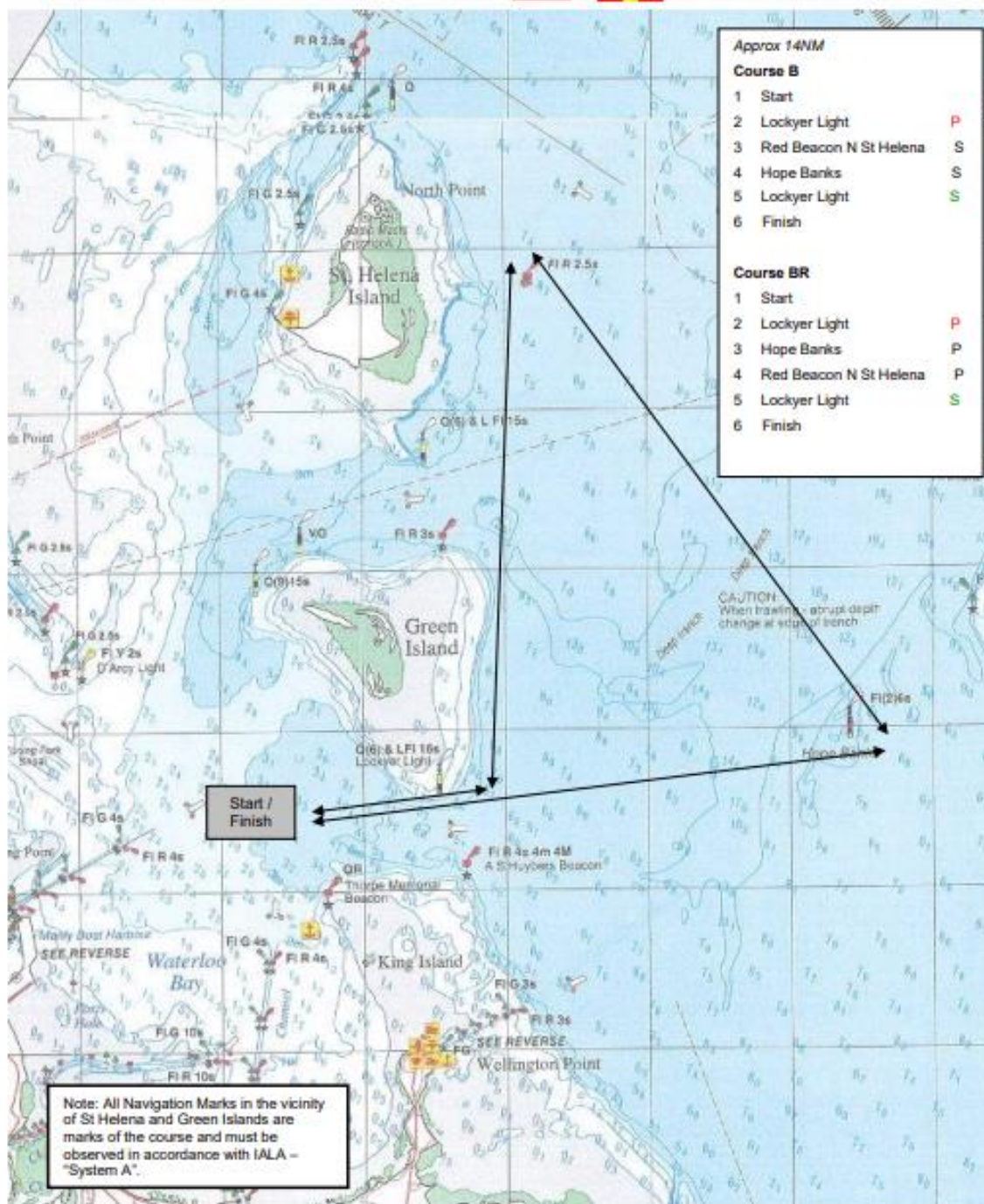
COURSE A  / COURSE AR  



Note: charts illustrated in these sailing instructions show the general racing area – Not for Navigation




WAGS 2020 - 2021
NOTICE OF RACE & SAILING INSTRUCTIONS
 The Royal Queensland Yacht Squadron (RQYS)

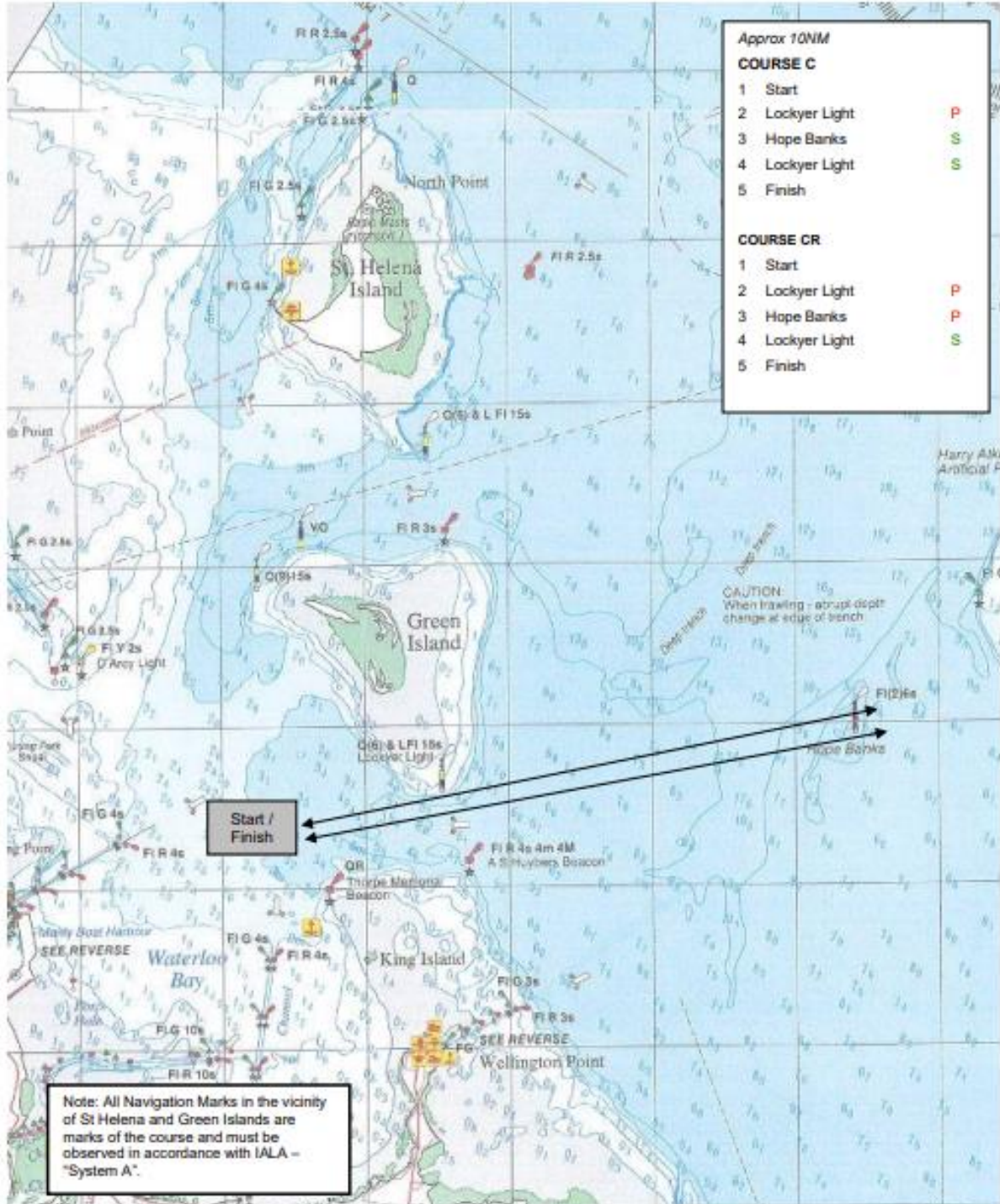
COURSE B  / **COURSE BR**  






Note: charts illustrated in these sailing instructions show the general racing area – **Not for Navigation**

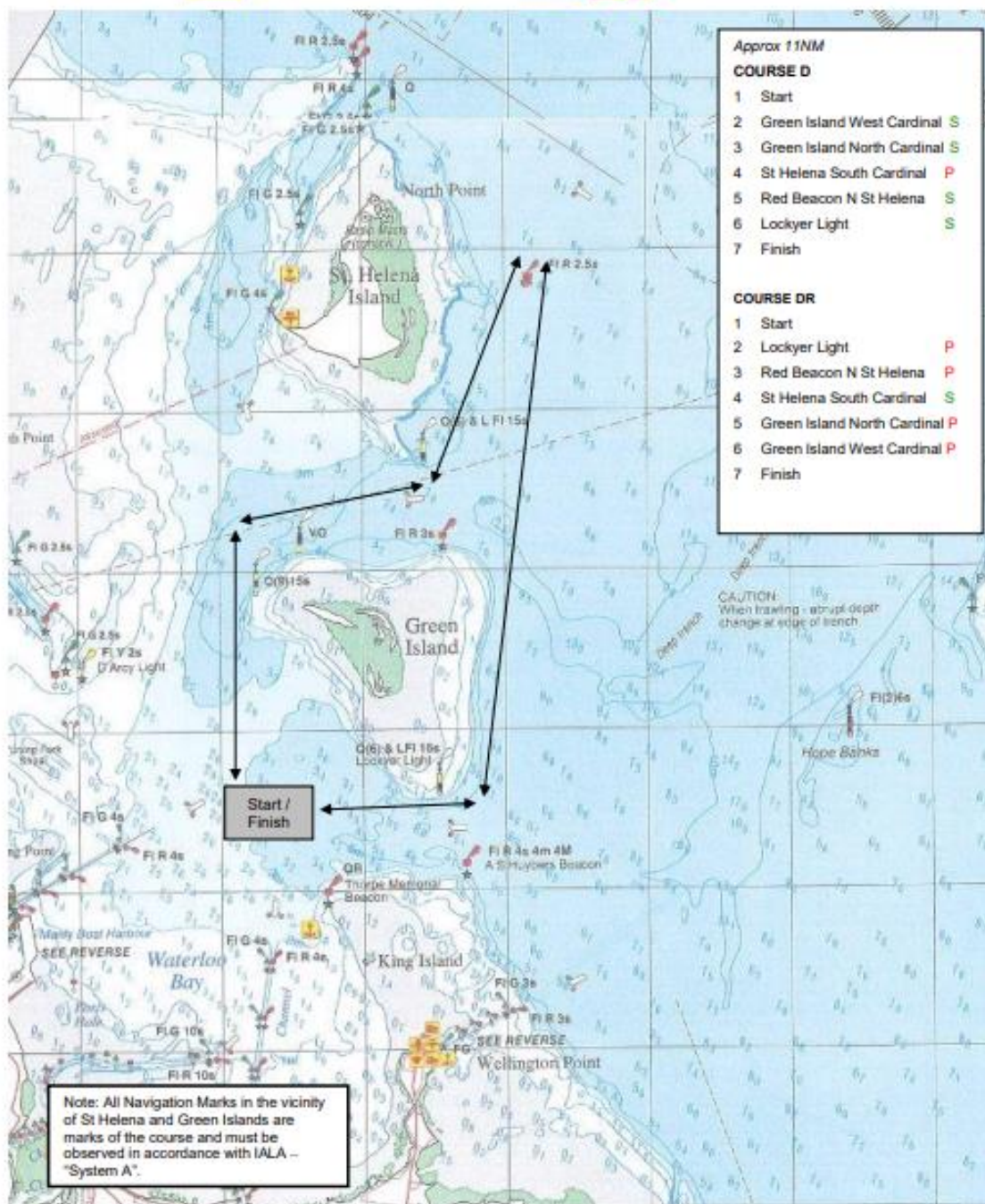
WAGS 2020 - 2021
NOTICE OF RACE & SAILING INSTRUCTIONS
 The Royal Queensland Yacht Squadron (RQYS)

COURSE C  / **COURSE CR**  





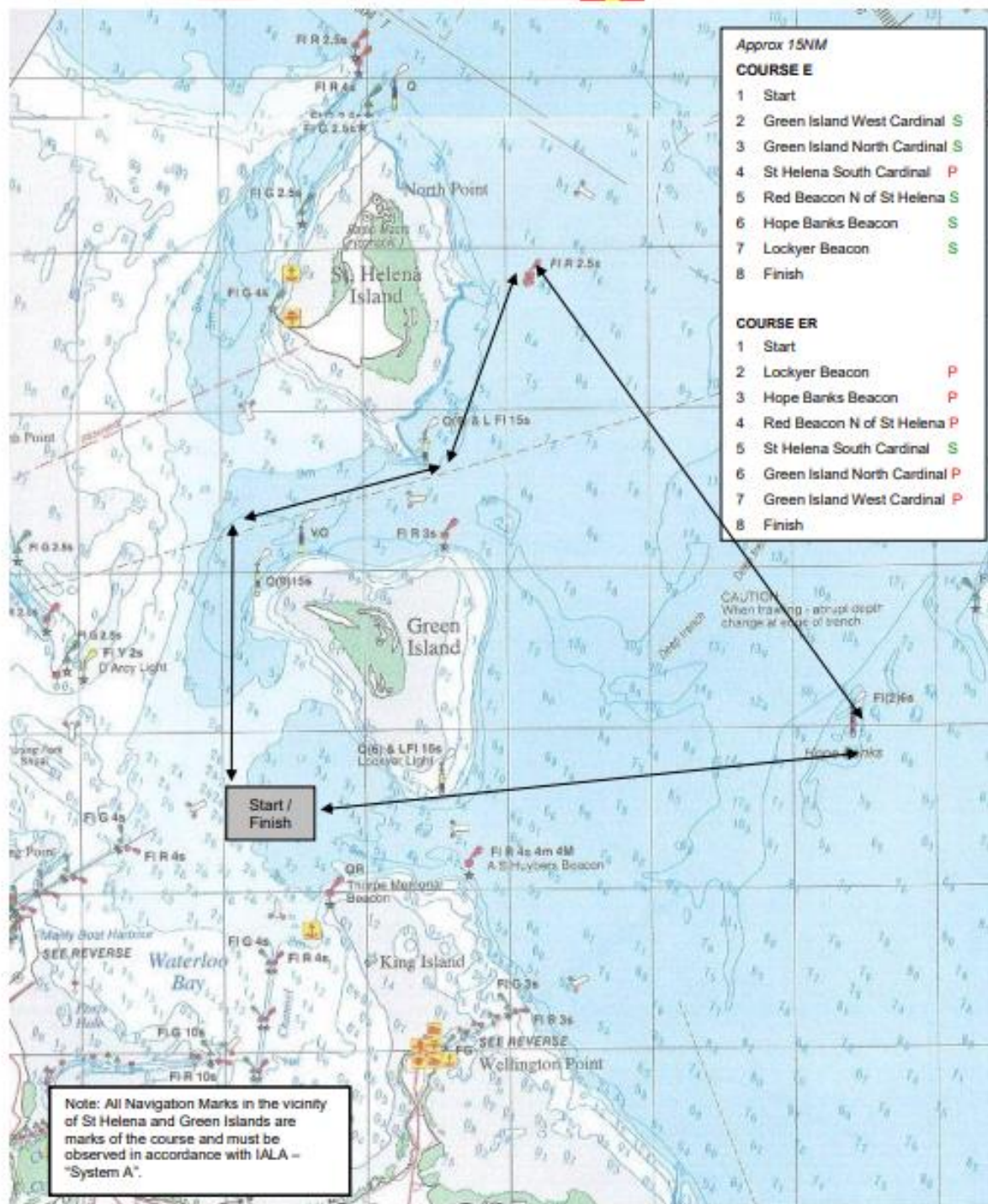
Note: charts illustrated in these sailing instructions show the general racing area – **Not for Navigation**

COURSE D  / COURSE DR  



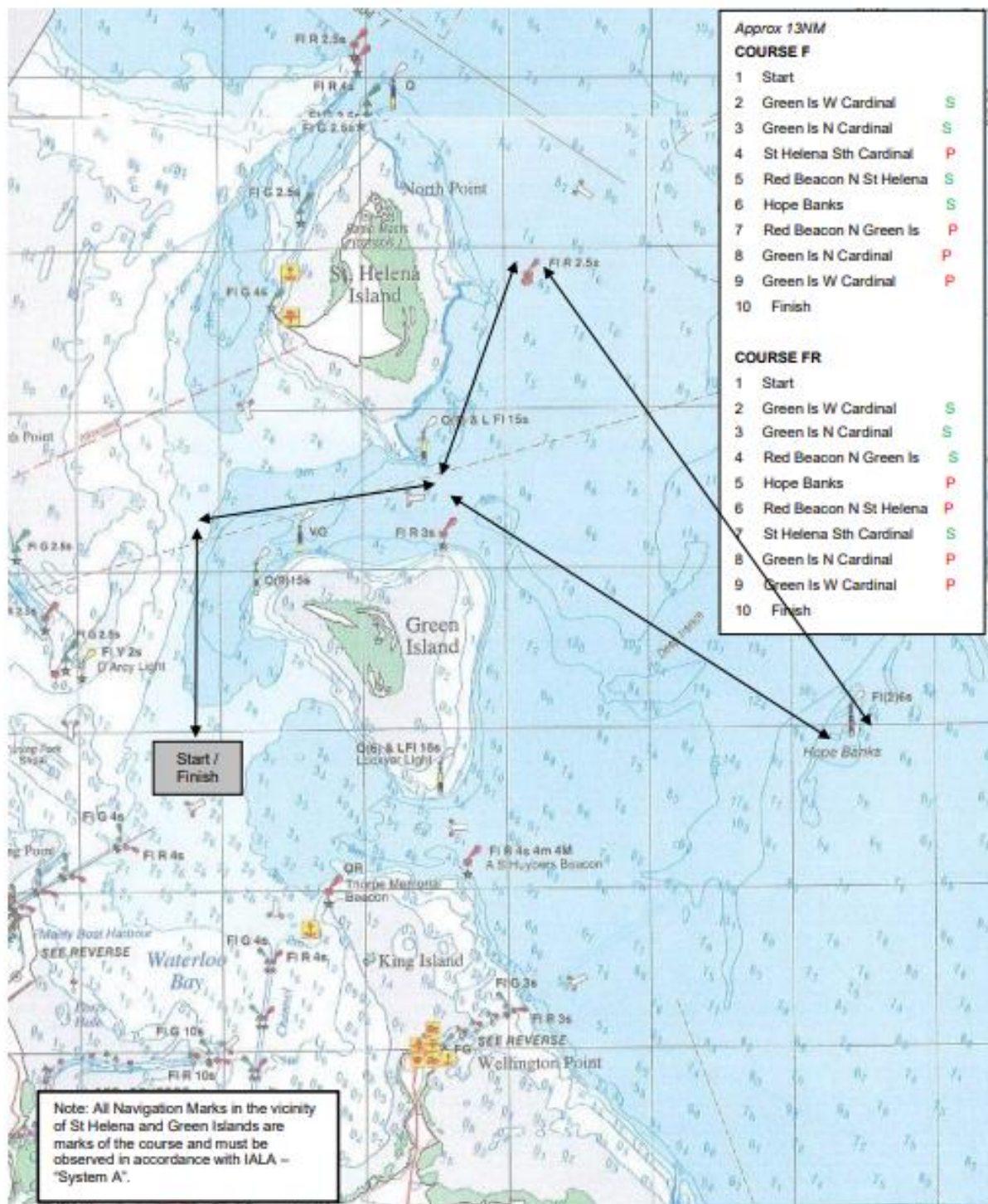
Note: charts illustrated in these sailing instructions show the general racing area – **Not for Navigation**

COURSE E  / COURSE ER 



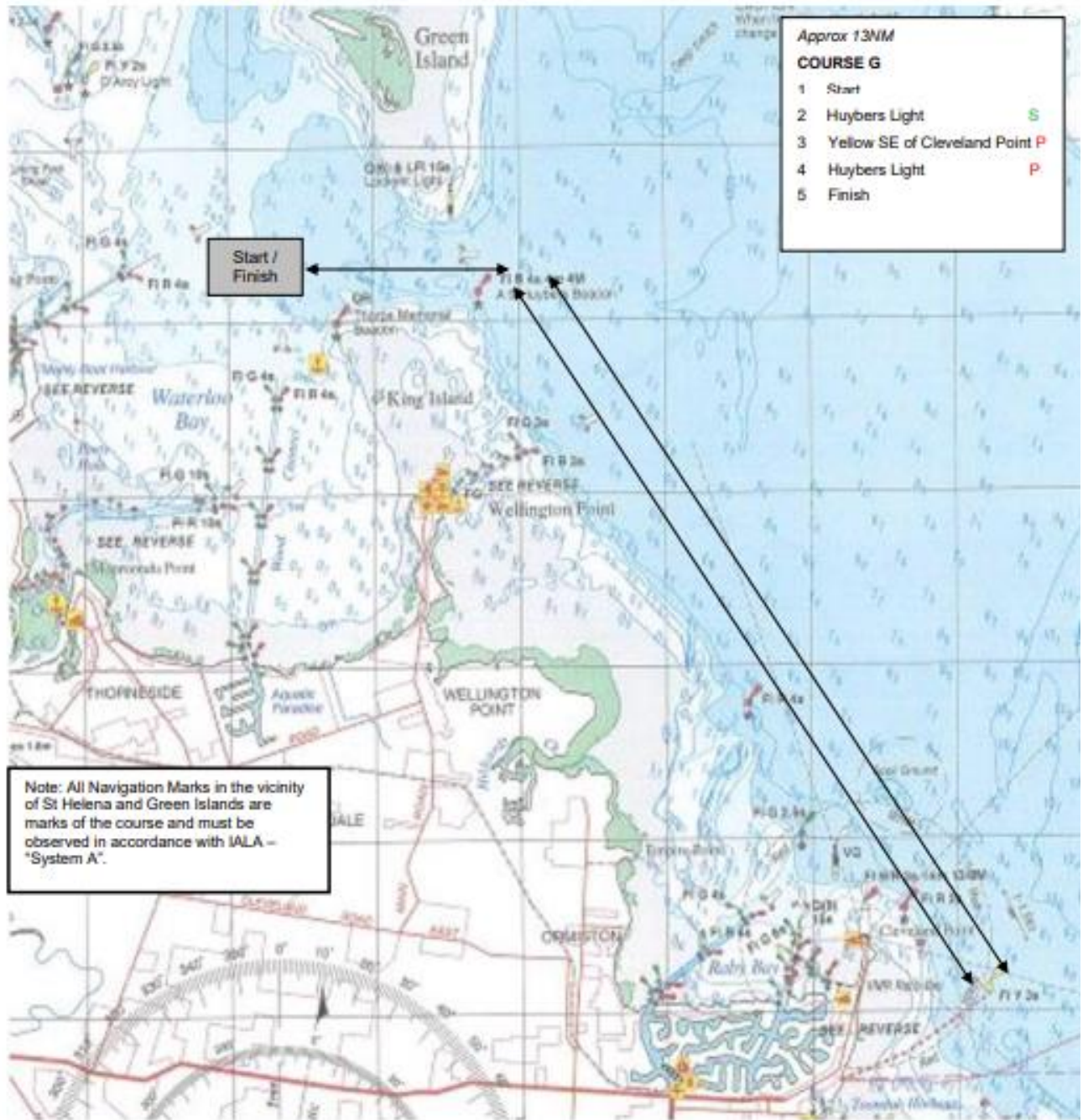
Note: charts illustrated in these sailing instructions show the general racing area – **Not for Navigation**

COURSE F  / COURSE FR  



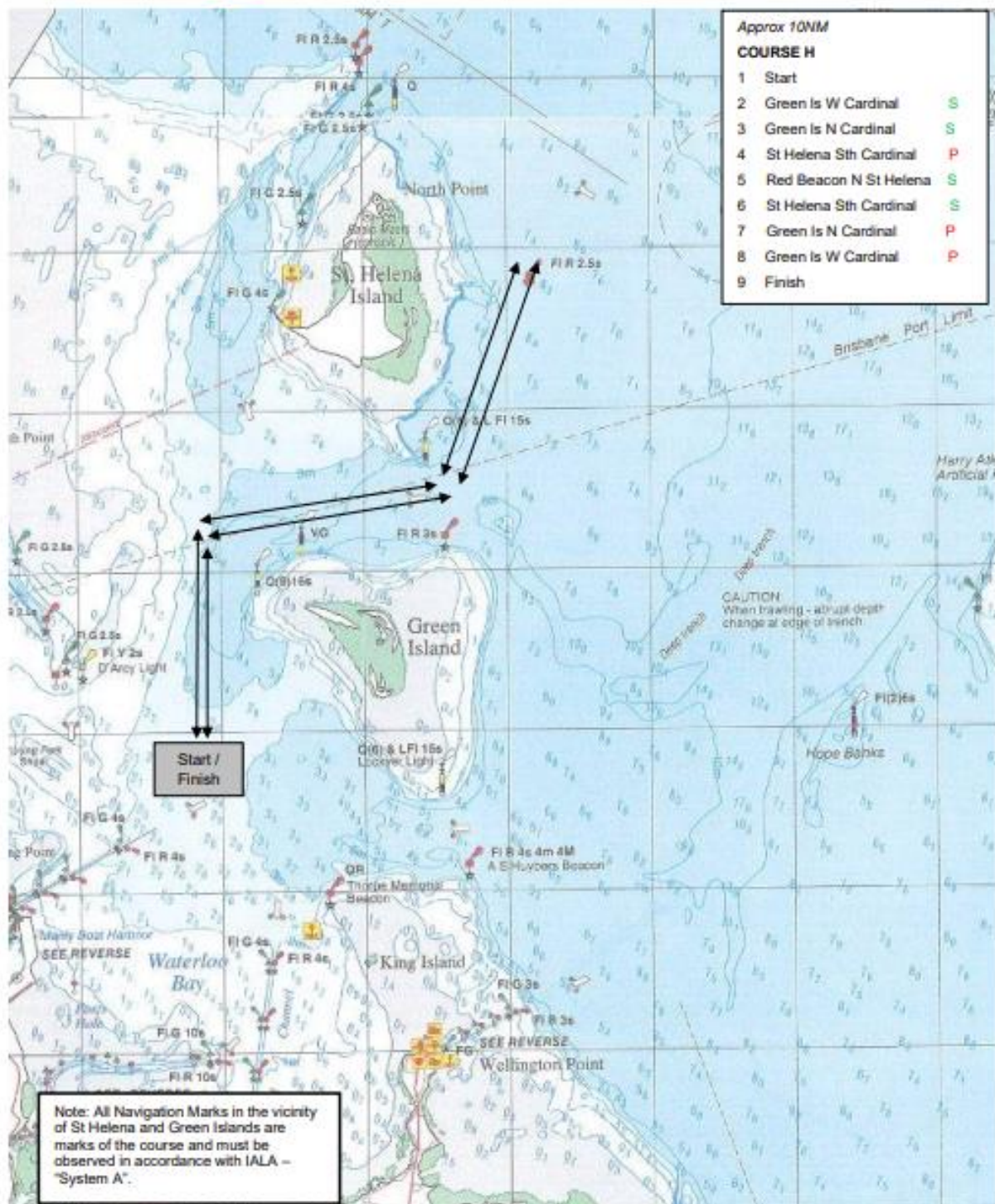
Note: charts illustrated in these sailing instructions show the general racing area – **Not for Navigation**

COURSE G






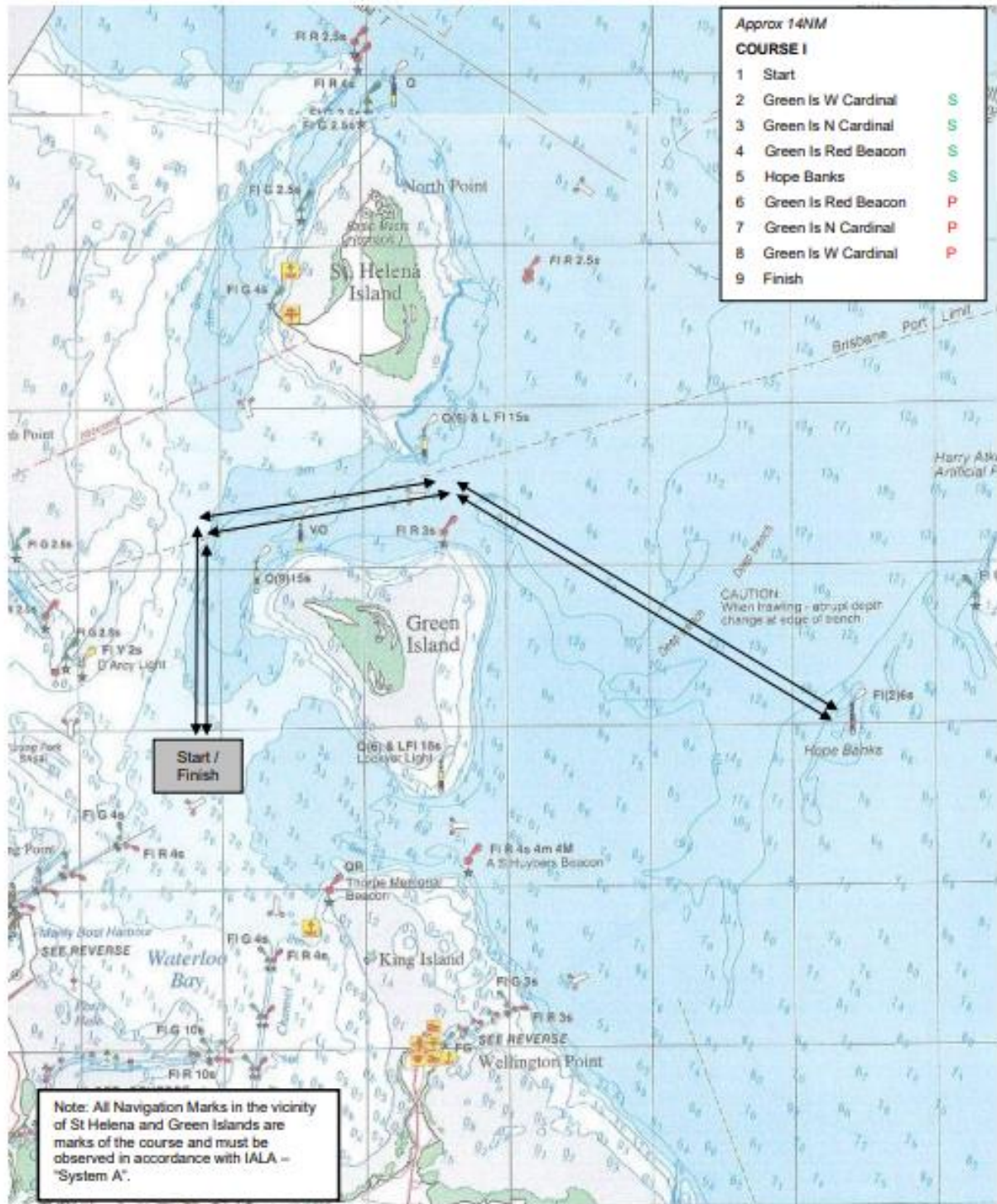
Note: charts illustrated in these sailing instructions show the general racing area – **Not for Navigation**

COURSE H



Note: charts illustrated in these sailing instructions show the general racing area – **Not for Navigation**

COURSE I  / COURS IR  



Note: charts illustrated in these sailing instructions show the general racing area – **Not for Navigation**