

SCHOOLS RACING TEAM RACING

7 - 28 March 2021



SAILING INSTRUCTIONS (SIs)

AMENDMENT 1

The notation '[NP]' in a rule of the sailing instructions (SIs) means that a boat may not protest another boat for breaking that rule. This changes RRS 60.1(a).

The organising Authority is the Royal Queensland Yacht Squadron.

1. RULES

- 1.1 The event is governed by the rules as defined in The Racing Rules of Sailing 2021-2024.
- 1.2 The Team Racing Rules (RRS Appendix D) apply.
- 1.3 The prescriptions and special regulations of Australian Sailing Part 2 – For Off the Beach Boats apply.
- 1.4 Races shall be umpired as per RRS Appendix D2.
- 1.5 Where there is a different between the Notice of Race and the Sailing Instructions (SI) the SI take precedence.

2. CHANGES TO SAILING INSTRUCTIONS

- 2.1 Any change to the sailing instructions will be posted before 0900 on the Friday before it will take effect, except that any change to the schedule of races will be posted by 1700 hrs on the day before it will take effect.
- 2.2 Changes to a sailing instructions may be made on the water by displaying code flag L. It shall be the responsibility of each team to obtain any verbal instructions given.

3. COMMUNICATIONS WITH COMPETITORS

- 3.1 Notices to competitors will be posted on the official notice board located at the RQYS website <https://www.rqys.com.au/sailingnoticeboard/>.

3.2 The race office is located at RQYS Marina Office, telephone 3396 8666, email sailing@rqys.com.au.

4. CODE OF CONDUCT

4.1 [DP] Competitors and support persons shall comply with reasonable requests from race officials.

5. SIGNALS MADE ASHORE

5.1 Signals made ashore will be displayed on the flagstaff adjacent to Bill Kirby Docks and the Fuel Dock.

5.2 When flag AP is displayed ashore, '1 minute' is replaced with 'not less than 45 minutes' in Race Signals AP.

6. SCHEDULE OF RACES

Date	Event	Time
Silver		
Sunday 7 March 2021	Briefing on Rigging Lawn	0815 hrs
	First Warning Signal	0930 hrs
	Gold	
	Briefing on Rigging Lawn	1145 hrs
	First Warning Signal	1300 hrs
Silver		
Sunday 14 March 2021	Briefing on Rigging Lawn	0815 hrs
	First Warning Signal	0930 hrs
	Gold	
	Briefing on Rigging Lawn	1145 hrs
	First Warning Signal	1300 hrs
Silver		
Sunday 21 March 2021	Briefing on Rigging Lawn	0815 hrs
	First Warning Signal	0930 hrs
	Gold	
	Briefing on Rigging Lawn	1145 hrs
	First Warning Signal	1300 hrs
Silver		
Sunday 28 March 2021	Briefing on Rigging Lawn	0815 hrs
	First Warning Signal	0930 hrs
	Presentation on Rigging Lawn	ASAP After Racing
	Gold	
	Briefing on Rigging Lawn	1145 hrs
	First Warning Signal	1300 hrs
	Presentation on Rigging Lawn	ASAP After Racing

6.1 To alert boats that a race or sequence of races will begin soon, the orange starting line flag will be displayed with one sound at least five minutes before a warning signal is made.

- 6.2 The race officer may elect to bring competitors back to shore for a break and will notify sailors by using L Flag.
- 6.3 On all scheduled race days, no warning signal for **Silver** Division will be made after 1200 hrs and for **Gold** Division 4430 (ADD) 1530 hrs.

7. RACING AREA

- 7.1 The racing area is Waterloo Bay SSE of the harbour entrance lateral beacons. Addendum 1 shows the location of the racing area.

8. COURSES

- 8.1 The courses being sailed shall be 'S' Configuration courses (see Addendum 2)

9. MARKS

- 9.1 The marks are described in Addendum 2

10. THE START

- 10.1 RRS 26 shall not apply.
- 10.2 Audible Signals shall govern the Start
- 10.3 The Race Number shall be displayed on the start boat prior to the warning signal.
- 10.4 The starting sequence shall be:

Signal	Time Before Starting Signal	Sound Signal	Visuals Indication Flags
Warning	3 Minutes	3 Long	3 Blue Flags
Preparatory	2 Minutes	2 Long	2 Blue Flags
One (1) Minute	1 Minute	1 Long	1 Blue Flags
	30 Seconds	3 Short	
	20 Seconds	2 Short	
	10 Seconds	1 Short	
	5 Seconds	1 Short	
	4 Seconds	1 Short	
	3 Seconds	1 Short	
	2 Seconds	1 Short	
	1 Second	1 Short	
Start	0 Seconds	1 Long	All Blue Flags Lowered

- 10.5 The starting line shall be between a staff displaying an orange flag on the start boat at the starboard end and the course side of the port-end starting mark.
- 10.6 [DP] [NP] Boats whose warning signal has not been made shall avoid the starting area during the starting sequence for other races and shall not interfere with any races in progress.
- 10.7 When at a boat's starting signal any part of her hull is on the course side of the starting line, the Race Committee shall promptly display Flag X with one sound and hail the bow or sail numbers of premature starters. The flag shall be displayed until all such boats are completely on the pre-start side of the starting line or its extensions, but not later than two (2) minutes after the starting signal. Failure of a hail, or failure of a boat

to hear a hailed number, shall not be grounds for redress. This changes RRS 29.1 and 62.1(a).

- 10.8 A boat shall not start more than two (2) minutes after her starting signal.
- 10.9 Visual indication flags shall be raised and lowered from the start boat to indicate the time before the start. Failure or mistiming of an indication flag shall not be grounds for redress. This changes RRS 60.1(b).
- 10.10 Signals shall be timed from the beginning of the sound signal.
- 10.11 Failure to hear a signal shall not be grounds for redress. This changes RRS 60.1(b)

11. THE FINISH

- 11.1 The finishing line is between a staff displaying a blue flag on the finishing mark at the starboard end and the course side of the port end finishing mark.

12. TIME LIMITS [AND TARGET TIMES]

- 12.1 Boats not Finishing within 5 minutes of the first boat shall be scored DNF without a hearing. This amends RRS 35 and D3.

13. HEARING REQUESTS

- 13.1 Boats intending to protest or seek redress other than under RRS D2.2(a) shall notify the race committee or the umpires of that intent immediately on completion of that race including the type of redress being sought.
- 13.2 Notices will be posted no later than 30 minutes after the protest time limit to inform competitors of hearings in which they are parties or named as witnesses. Hearings will be held in the protest room, located at QMTS Building, beginning at the time and date posted.

14. SCORING

- 14.1 The scoring system is as follows: RRS Appendix D

15. [DP] [NP] SAFETY REGULATIONS

- 15.1 Competitors shall comply with the following requirements within and in the vicinity of Manly Boat Harbour:
 - i. All boats shall keep to the right side of the channel when entering and exiting Manly Harbour.
 - ii. Once outside the Manly Boat Harbour, competitors are to, as soon as possible, stay outside of the main channel, keeping clear of powered vessels.

16. [DP] [NP] SUPPORT TEAMS

- 16.1 No support or coach boats are allowed within 50 metres of the course, unless asked to assist by the race officer. The penalty for failing to comply with this requirement shall be at the discretion of the Jury and may result in the disqualification of all boats associated with the offending coach boat.
- 16.2 In the event of extreme conditions, all Patrol and Support boats are to follow the requests of the Race Committee for their course on VHF Channel 77.
- 16.3 Speed around the course shall be kept to a minimum with the boats engine to be in NEUTRAL when around sailors/people in the water.
- 16.4 Maximum speed whilst in the Harbour shall be 6 knots except in emergency situations.
- 16.5 In the case of a medical emergency, the vessel offering the First Aid, shall report the details to the Sailing Office on VHF Channel 77 "RQ77" and proceed to the "Fuel Pontoon" where RQYS Staff shall be on hand to assist.

17. [DP] [NP] TRASH DISPOSAL

17.1 Trash may be placed aboard official [or support person] vessels.

18. PRIZES

18.1 Prizes will be given in each division for:

1st, 2nd and 3rd

1st Female team prize shall be awarded.

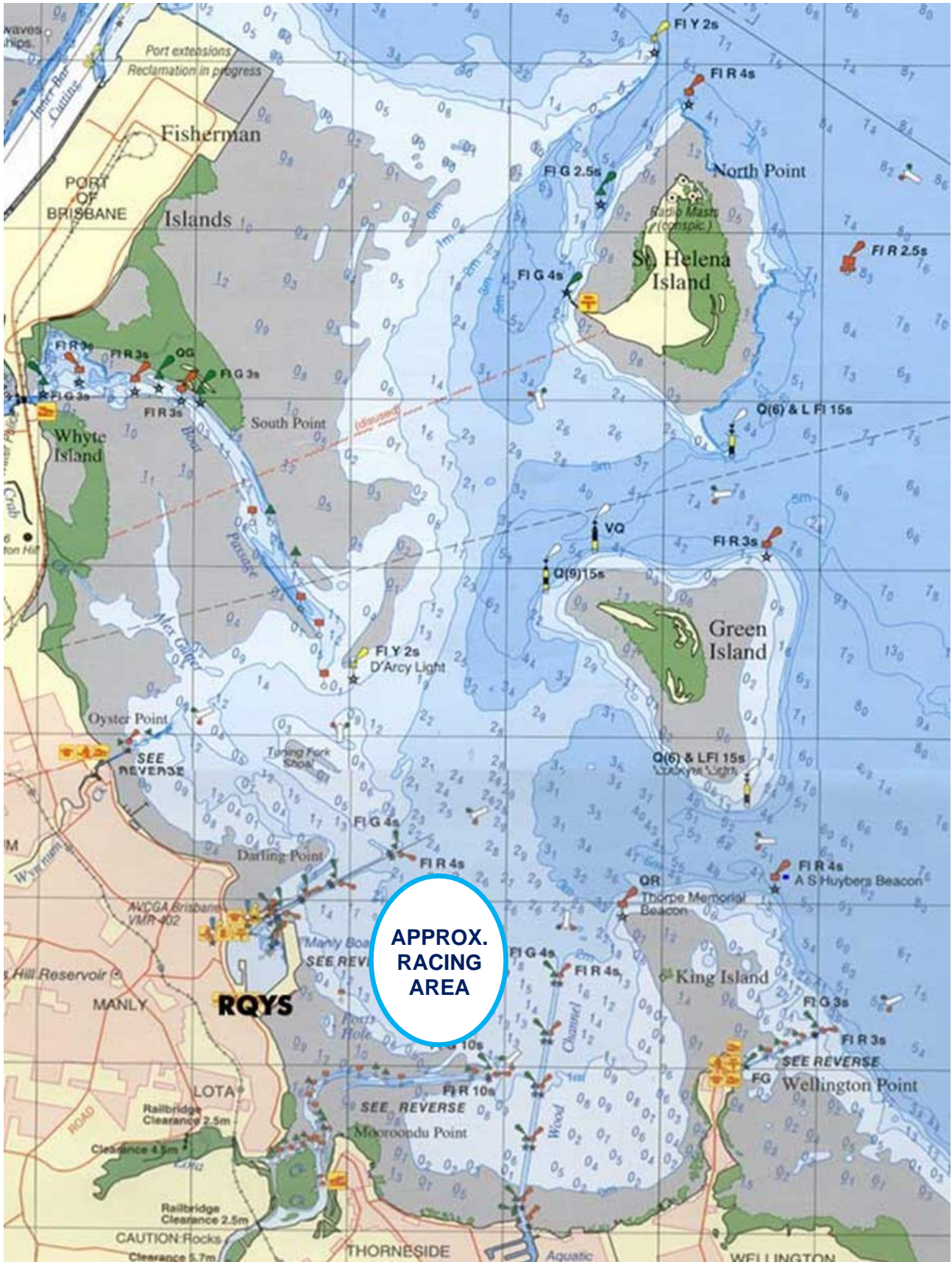
19. RISK STATEMENT

19.1 RRS 3 states: 'The responsibility for a boat's decision to participate in a race or to continue to race is hers alone.' By participating in this event each competitor agrees and acknowledges that sailing is a potentially dangerous activity with inherent risks. These risks include strong winds and rough seas, sudden changes in weather, failure of equipment, boat handling errors, poor seamanship by other boats, loss of balance on an unstable platform and fatigue resulting in increased risk of injury. **Inherent in the sport of sailing is the risk of permanent, catastrophic injury or death by drowning, trauma, hypothermia or other causes.**

20. INSURANCE

20.1 Each participating boat shall be insured with valid third-party liability insurance with a minimum cover of \$10,000,000 per incident or the equivalent.

SI ADDENDUM 1



SI ADDENDUM 2

Course

Start – 1 – 2 – 3 – 4 - Finish.

Marks

ALL rounding marks shall be orange flags on a float.

The Start Pin and Finish Pin shall both be orange flags with a black, diagonal line, on a float.

