

SCHOOLS RACING FLEET RACING

7 - 21 FEBRUARY 2021



Organising Authority Royal Queensland Yacht Squadron SAILING INSTRUCTIONS (SIs)

The notation '[NP]' in a rule of the sailing instructions (SIs) means that a boat may not protest another boat for breaking that rule. This changes RRS 60.1(a).

AMENDMENT 1

1. RULES

- 1.1 The event is governed by the rules as defined in The Racing Rules of Sailing .
- 1.2 The Australian Sailing Special Regulations Part 2 – Off the Beach Classes and AS Prescriptions shall apply.
- 1.3 These Sailing Instructions shall take precedents over the Notice of Race, if there are any conflict between them.

2. CHANGES TO SAILING INSTRUCTIONS

- 2.1 Any change to the sailing instructions will be posted before 0830 hours on the day it will take effect, except that any change to the schedule of races will be posted by 1700 hours on the Friday before it will take effect.
- 2.2 Changes to a sailing instruction may be made on the water by displaying code flag L. It shall be the responsibility of each school to obtain any verbal instructions given.

3. COMMUNICATIONS WITH COMPETITORS

- 3.1 Notices to competitors will be posted on the official notice board located at <https://www.rqys.com.au/sailingnoticeboard/>.
- 3.2 The race office is located at RQYS Marina Office, telephone 3396 8666, email address sailing@rqys.com.au.
- 3.3 [DP] From the first warning signal until the end of the last race of the day, except in an emergency, a boat shall not make voice or data transmissions and shall not receive voice or data communication that is not available to all boats.

4. CODE OF CONDUCT

- 4.1 [DP] Competitors and support persons shall comply with reasonable requests from race officials.
- 4.2 [DP] Competitors and support persons shall handle any equipment by the organizing authority with care, seamanship, in accordance with any instructions for its use and without interfering with its functionality.

5. SIGNALS MADE ASHORE

- 5.1 Signals made ashore will be displayed on the flagstaff adjacent to Bill Kirby Docks and the Fuel Dock..
- 5.2 When flag AP is displayed ashore, '1 minute' is replaced with 'not less than 30 minutes' in Race Signals AP.
- 5.3 [DP] Flag D with one sound means 'Boats are requested not to leave the harbour until this signal is made. The warning signal will not be made before the scheduled time or less than 60 minutes after flag D is displayed.'

6. SCHEDULE OF RACES

6.1

Date	Event	Time
Fleet Racing		
Sunday 7, February 2021	Briefing on RQYS Rigging Lawn	8:30am
	First Warning Signal (4 Races)	9:45am
Sunday 14, February 2021	Briefing on RQYS Rigging Lawn	8:30am
	First Warning Signal (3 Races)	9:45am
Sunday 21, February 2021	Briefing on RQYS Rigging Lawn	8:30am
	First Warning Signal (3 Races)	9:45am
	Presentation on RQYS Rigging Lawn	After Racing

- 6.2 To alert boats that a race or sequence of races will begin soon, the orange starting line flag will be displayed with one sound at least five minutes before a warning signal is made.
- 6.3 On all scheduled race days no warning signal will be made after 1230 hours.

7. CLASS FLAGS

- 7.1 The class flag will be the Pacer Class (Division 1) flag for the Pacer Class.

8. RACING AREA

- 8.1 The racing area is Waterloo Bay South-south-east of the harbour entrance lateral beacons. SI Addendum 1 shows the location of the racing area.

9. COURSES

- 9.1 The courses are described in Addendum 2.
- 9.2 No later than the warning signal, the race committee signal vessel will display the approximate compass bearing of the first leg.

10. MARKS

- 10.1 The marks are described in Addendum 2

11. THE START

- 11.1 Races will be started using RRS 26.
- 11.2 The starting line shall be between a staff displaying an orange flag on the start boat at the starboard end and the course side of the port-end starting mark.
- 11.3 Boats whose warning signal has not been made shall avoid the starting area during the starting sequence for other races..
- 11.4 If any part of a boat's hull is on the course side of the starting line at her starting signal and she is identified, the race committee will attempt to hail her sail number. Failure to hail her number, failure of her to hear such a hail, or the order in which boats are hailed will not be grounds for a redress for request. This changes RRS 62.1(a).
- 11.5 A boat that does not start within Four (4) minutes after her starting signal will be scored Did Not Start without a hearing. This changes RRS A5.1 and A5.2.

12. CHANGE OF THE NEXT LEG OF THE COURSE

- 12.1 To change the next leg of the course, the race committee will move the original mark or the finishing line to a new position.

13. THE FINISH

- ~~13.1 The finishing line is between a staff displaying a blue flag on the finishing mark at the starboard end and the course side of the port end finishing mark.~~

(ADD)

- 13.1 The finishing line is between a staff displaying a blue flag on the port end of the race committee boat and on the course side of the starboard end finishing mark.

14. (ADD) TIME LIMIT

- 14.1 Boats failing to finish within 15 minutes after the first boat in their class sails the course and finishes shall be scored DNF without a hearing. This changes RRS 35, A4 & A5.

15. PENALTY SYSTEM

- 15.1 For the Division 1 class, RRS 44.1 is changed so that the Two-Turns Penalty is replaced by the One-Turn Penalty.
- 15.2 RRS Appendix P applies.
- 15.3 RRS Appendix P applies with the Two-Turns penalty replaced by the One-Turn Penalty.
- 15.4 RRS P2.3 does not apply and RRS P2.2 is changed so that it applies to any penalty after the first one.

16. HEARING REQUESTS

- 16.1 For each class, the protest time limit is 60 minutes after the last boat in that class finishes the last race of the day or the race committee signals no more racing today, whichever is later. The time will be posted on the official notice board.
- 16.2 Hearing request forms are available from the race office at the RQYS Sailing Office.
- 16.3 Notices will be posted no later than 30 minutes after the protest time limit to inform competitors of hearings in which they are parties or named as witnesses. Hearings will be held in the protest room, located at QMTS Building beginning at the time and date posted.
- 16.4 The right of appeal from a protest committee decision is denied as provided in rule 70.5(a)

17. SCORING

- 17.1 The scoring system is as follows: RRs Appendix A – 'Low Point System'.
- 17.2 Four (4) races are required to be completed to constitute a series.

- 17.3 (a) When fewer than Five (5) races have been completed, a boat's series score is the total of her race scores.
(b) When from Five (5) to Eight (8) races have been completed, a boat's series score is the total of her race scores excluding her worst score.
(c) When Nine (9) or more races have been completed, a boat's series score is the total of her race scores excluding her two worst scores.
- 17.4 Results are given to the skipper rather than the boat/sail number. For a substituted skipper to receive results, they must have lodged a casual or series entry prior to racing.

18. SAFETY REGULATIONS

- 18.1 Competitors shall SIGN ON before leaving shore and SIGN OFF upon returning to shore, before the end of protest time.
- 18.2 Failure to SIGN ON shall result in the competitor receiving a Discretionary Penalty (DPI) of two (2) points for the first race of the day, but not worse than a DNF score.
- 18.3 Failure to SIGN OFF shall result in the competitor receiving a Discretionary Penalty (DPI) of two (2) points for the last race of the day, but not worse than a DNF score.
- 18.4 Competitors shall comply with the following requirements within and in the vicinity of Manly Boat Harbour
- 17.4.1 All boats shall keep to the right side of the channel when entering and exiting Manly Harbour.
- 17.4.2 Once outside the Manly Boat Harbour, competitors are to, as soon as possible, stay outside of the main channel, keeping clear of powered vessels.
- 17.5 Competitors shall wear personal flotation devices at all times whilst afloat.
- 17.6 A boat that retires from racing shall notify the Race Committee before leaving the racing area or if that is not possible, shall notify the Race Office and SIGN OFF as soon as possible after returning ashore.
- 17.7 Flag AP over H displayed ashore means boats shall not leave the beach. Await further instructions from the Race Committee.

19. REPLACEMENT OF CREW OR EQUIPMENT

- 19.1 [DP] Substitution of competitors is not allowed without prior written approval of the Race Committee.
- 19.2 [DP] Substitution of damaged or lost equipment is not allowed unless authorized in writing by the Race Committee. Requests for substitution shall be made to the committee at the first reasonable opportunity, which may be after the race.

20. OFFICIAL VESSELS

- 20.1 Official vessels will be identified as follows: White Flags showing the letter RC in black.

21. [DP] SUPPORT TEAMS

- 21.1 Team leaders, coaches and other support persons shall stay outside areas where boats are racing from the time of the preparatory signal for the first start until all boats have finished or retired or the race committee signals a postponement, general recall or abandonment.
- 21.2 In the case of a medical emergency, the vessel offering the First Aid, shall call the ambulance directly, if suitable, and then report the details to the Sailing Office on VHF Channel 77 or 72 and proceed to the closest (or most suitable) port / dock to meet emergency services.
- 21.3 In the event of extreme conditions, all Patrol and Support boats are to follow the commands of the Race Committee for their course on VHF Channel 77.
- 21.4 Maximum speed whilst in the Harbour shall be 6 knots (no wash) except in emergency situations.

22. TRASH DISPOSAL

22.1 Trash may be placed aboard official or support person vessels.

23. PRIZES

23.1 Prizes will be given for 1st, 2nd and 3rd.

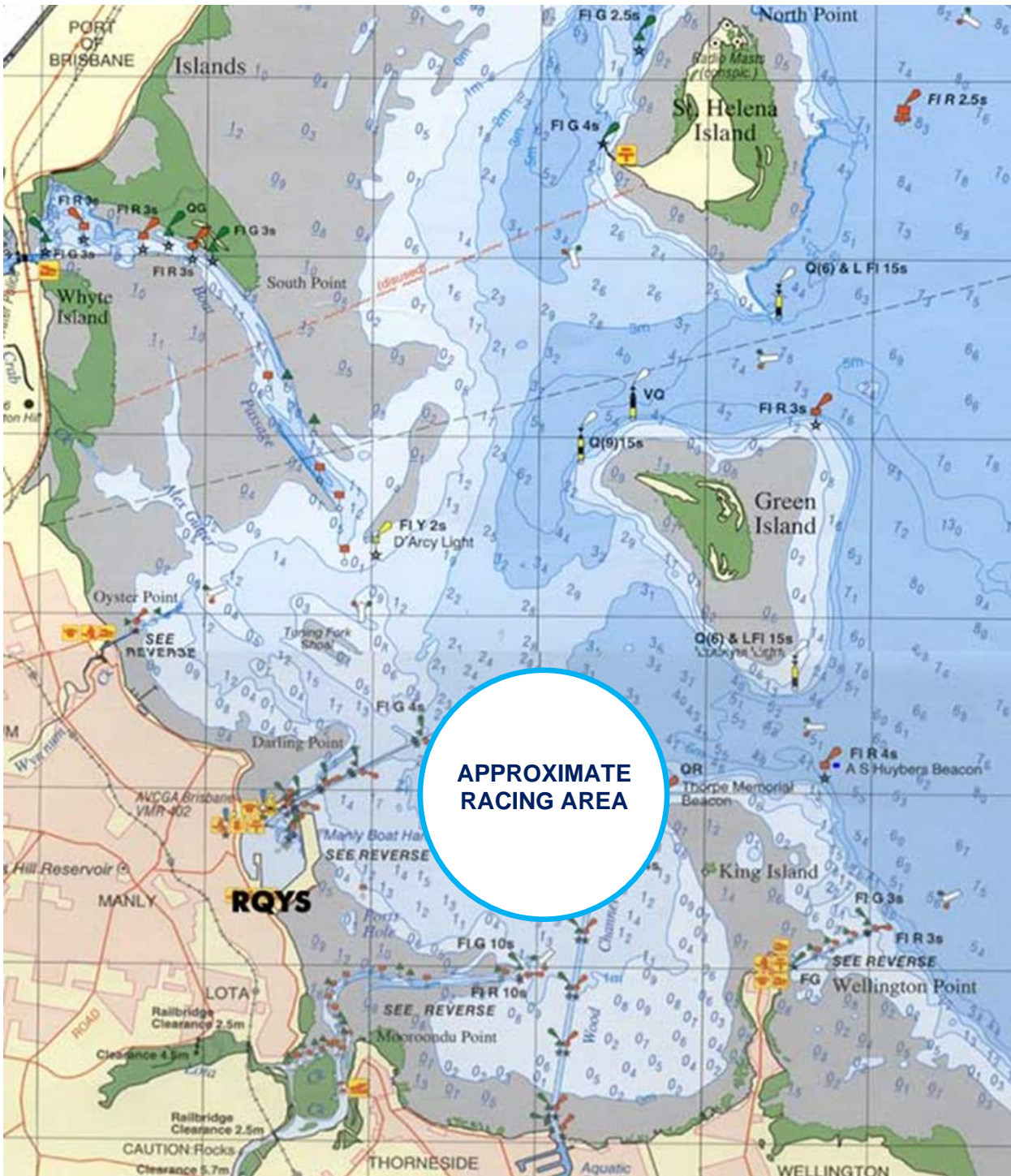
24. RISK STATEMENT

24.1 RRS 3 states: 'The responsibility for a boat's decision to participate in a race or to continue to race is hers alone.' By participating in this event each competitor agrees and acknowledges that sailing is a potentially dangerous activity with inherent risks. These risks include strong winds and rough seas, sudden changes in weather, failure of equipment, boat handling errors, poor seamanship by other boats, loss of balance on an unstable platform and fatigue resulting in increased risk of injury. **Inherent in the sport of sailing is the risk of permanent, catastrophic injury or death by drowning, trauma, hypothermia or other causes.**

25. INSURANCE

30.1 Each participating boat shall be insured with valid third-party liability insurance with a minimum cover of AUD \$10,000,000 or the equivalent.

ADDENDUM 1 – APPROXIMATE RACE AREA



ADDENDUM 2 – COURSES

CODE	COURSE	MARKS DESCRIPTION
L1	Start – 1 – Finish	Mark 1: Purple Inflatable Mark 2s, 2p & Start/Finish Pin: Orange Teardrop
L2	Start – 1 – 2s/2p – 1 – Finish	
L3	Start – 1 – 2s/2p – 1 – 2s/2p – 1 - Finish	

