



SUMMER REGATTA 2021

16th January - 17th January 2021

SAILING INSTRUCTIONS

INCLUDES AMENDMENT 1, 2 & 3

The notation '[NP]' in a rule of the sailing instructions (SIs) means that a boat may not protest another boat for breaking that rule. This changes RRS 60.1(a).

1. RULES

- 1.1. The event is governed by the rules as defined in The Racing Rules of Sailing 2021-2024.
- 1.2. RRS Appendix B will apply for all board classes.
- 1.3. The Introductory Rules of Racing will apply to Green Fleet optimist sailors.
- 1.4. RRS Appendix T – Arbitration will apply.
- 1.5. RRS Abbreviated Appendix P will apply.
- 1.6. Green Fleet are exempt from requiring a class association membership for this regatta.
- 1.7. Where there is conflict between the Notice of Race (NOR) and the Sailing Instructions (SI), the SI shall take precedence.

2. CHANGES TO SAILING INSTRUCTIONS

- 2.1. Any change to the sailing instructions will be posted before 0900 on the day it will take effect, except that any change to the schedule of races will be posted by 2000 on the day before it will take effect.
- 2.2. To allow change to Sailing Instructions on the water by flying code flag L and displaying change on a board on the start boat.

3. COMMUNICATIONS WITH COMPETITORS

- 3.1. Notices to competitors will be posted on the official online notice board located at <https://www.rqys.com.au/sailingnoticeboard/>.
- 3.2. The race office is located at RQYS Marina Office, telephone 07 3396 8666, email sailing@rqys.com.au.
- 3.3. [DP] While racing, except in an emergency, a boat shall not make voice or data transmissions and shall not receive voice or data communication.

4. CODE OF CONDUCT

- 4.1 [DP] Competitors and support persons shall comply with reasonable requests from race officials.
- 4.2 [DP] Competitors and support persons shall handle any equipment or place advertising provided by the organizing authority with care, seamanship, in accordance with any instructions for its use and without interfering with its functionality.

5. SIGNALS MADE ASHORE

- 5.1. Signals made ashore will be displayed on the official flag pole located adjacent to the RQYS main rigging lawn.
- 5.2. When flag AP is displayed ashore, '1 minute' is replaced with 'not less than 45 minutes' in Race Signals AP.
- 5.3. [DP] Flag D with one sound means boats are requested not to leave the harbour until this signal is made. The warning signal will not be made before the scheduled time or less than 60 minutes after flag D is displayed.'

6. SCHEDULE OF RACES

6.1.

Date	Event	First Warning Signal or Time
Thursday 14 th January 2021	Registration (Next to RQYS Sailing Gym)	8:00am – 4:00pm
Friday 15 th January 2021	Northern Course Briefing	9:30am
	Southern Course Briefing	10:30am
	Northern First Warning Signal	11:00am
	Southern First Warning Signal	12:00am
	(ADD) Registration (Next to RQYS Sailing Gym)	(ADD) 2:00pm – 4:00pm
Saturday 16 th January 2021	(ADD) Registration Next to RQYS Sailing Gym	(ADD) 8:00am-9:00am
	(ADD) Northern Course Briefing	(ADD) 9:00am
	(ADD) Southern Course Briefing	(ADD) 9:30am
	Northern First Warning Signal	11:00am
	Southern First Warning Signal	12:00pm (ADD) 11:30am
Sunday 17 th January 2021	Northern First Warning Signal	11:00am
	Southern First Warning Signal	12:00pm (ADD) 11:30am
	Regatta Presentation	After Racing

- 6.2. One extra race per day may be sailed, provided that no class becomes more than one race ahead of schedule and the change is made according to SI 2.1.

6.3. To alert boats that a race or sequence of races will begin soon, the orange starting line flag will be displayed with one sound at least five minutes before a warning signal is made.

6.4. On the last scheduled day of racing no warning signal will be made after 1500 hrs.

7. CLASS FLAGS

7.1. The Class flags are listed in Attachment 1.

8. RACING AREA

8.1 The location of racing is shown in Attachment 2.

9. COURSES

9.1. Course areas are allocated in Attachment 1.

9.2. No later than the warning signal, the race committee signal vessel will display the approximate compass bearing of the first leg.

10. MARKS

10.1 Marks, including starting and finishing marks, are described in Attachment 3.

10.2 If one of the gate marks is missing then the remaining mark shall be left to port.

11. THE START

11.1. Races will be started using RRS 26 with the warning signal made 5 minutes before the starting signal.

11.2. The starting line is between a staff displaying an orange flag on the starting vessel at the starboard end and the course side of the port-end starting mark.

11.3. Boats whose warning signal has not been made shall avoid the starting area during the starting sequence for other races.

11.4. If any part of a boat's hull is on the course side of the starting line at her starting signal and she is identified, the race committee will attempt to hail her sail number. Failure to hail her number, failure of her to hear such a hail, or the order in which boats are hailed will not be grounds for a redress for request. This changes RRS 62.1(a).

11.5. A boat that does not start within 4 minutes after her starting signal will be scored Did Not Start without a hearing. This changes RRS A5.1 and A5.2.

12. CHANGE OF THE NEXT LEG OF THE COURSE

12.1. To change the next leg of the course, the race committee will lay a new mark (or move the finishing line) and remove the original mark as soon as practicable. When in a subsequent change a new mark is replaced, it will be replaced by an original mark.

13. THE FINISH

13.1. The finishing line is between a staff displaying a blue flag on the finishing mark at the starboard end and the course side of the port end finishing mark.

14. PENALTY SYSTEM

14.1 For the 29er, VX One and Catamaran classes, RRS 44.1 is changed so that the Two-Turns Penalty is replaced by the One-Turn Penalty.

14.2 RRS Appendix P will apply for the following classes: Flying 11, Optimist Open, Optimist Intermediate and Laser classes.

(a) Appendix P2.1 is amended so that when a boat is first penalised under rule p1.2 her penalty shall be a One-Turn Penalty (Not a Two-Turn Penalty).

(b) Appendix P2.3 will not apply and rule P2.2 is changed so that it will apply to any penalty after the first one.

15. TIME LIMITS [AND TARGET TIMES]

- 15.1. The Race Time Limit (see RRS 35), and the Finishing Window are shown in Attachment 1.
- 15.2. The Finishing Window is the time for boats to finish after the first boat sails the course and finishes. Boats failing to finish within the Finishing Window, and not subsequently retiring, penalized or given redress, will be scored Time Limit Expired (TLE) without a hearing. A boat scored TLE shall be scored points for the finishing place two more than the points scored by the last boat that finished within the Finishing Window. This changes RRS 35, A5.1, A5.2 and A10.
- 15.3. Failure to meet the Target Time will not be grounds for redress. This changes RRS 62.1(a).

16. HEARING REQUESTS

- 16.1. For each class, the protest time limit is 60 minutes after the last boat in that class finishes the last race of the day or the race committee signals no more racing today, whichever is later. The time will be posted on the official notice board <https://www.rqys.com.au/sailingnoticeboard/>.
- 16.2. Hearing request forms are available from the race office at the RQYS Sailing Office.
- 16.3. Notices will be posted no later than 30 minutes after the protest time limit to inform competitors of hearings in which they are parties or named as witnesses. Hearings will be held in the protest room, located at RQYS Marina Office, beginning at the time posted.
- 16.4. A list of boats that have been penalized for breaking RRS 42 under Appendix P will be posted.
- 16.5. On the last scheduled day of racing, a request for redress based on a protest committee decision shall be delivered no later than 30 minutes after the decision was posted. This changes RRS 62.2.

17. SCORING

- 17.1. Three (3) races are required to be completed to constitute a series.
- 17.2. The discards race scores for this regatta shall be as follows:
~~(a) When fewer than four (4) three (3) races have been completed, a boat's series score is the total of her race scores.~~

(ADD)

(a) When 3 or less races have been completed, a boat's series score is the total of her race scores.

(b) When from (ADD) four (4) or more races have been completed, a boat's series score is the total of her race scores excluding her worst score.

18. SAFETY REGULATIONS

- 18.1. All skippers shall SIGN ON before racing each day and SIGN OFF at the earliest possible time after the completion of racing (but not later than the end of protest time). The sign on will be available near the rigging lawn and Centre of Excellence two (2) hours prior to the first warning signal scheduled on the day of racing. [DP]
- 18.2. The skipper of a boat that retires or does not intend to continue racing is required to SIGN OFF immediately on return to shore. [DP]
- 18.3. A boat that retires from a race shall notify the race committee as soon as possible. [DP]
- 18.4. Competitors shall comply with the following harbour bylaws:
 - (a) All sailing vessels shall give way to powered vessels at all times whilst inside the Manly Boat Harbour. Once outside the Manly Boat Harbour, competitors are to as soon as possible stay outside of the main channel, keeping clear of powered vessels. [DP]
 - (b) No Spinnakers are to be flown in the Manly Harbour 6-knot area. [DP]
- 18.5. Failure to SIGN ON shall result in that boat being penalised three (3) points for the first race of the session (but not worse than DNF). Failure to SIGN OFF shall result in that boat being

penalised three (3) points for the last race of the session (but not worse than DNF). Penalties will be applied without a hearing. This changes RRS 63.1 and A5. [DP]

18.6. [DP] A boat that retires from a race shall notify the race committee at the first reasonable opportunity.

18.7. (ADD) [DP] Competitors and support persons shall comply with any reasonable request from an event official. Failure to comply may be misconduct.

18.8. (ADD) Reasonable actions by event officials to implement COVID-19 guidance, protocols or legislation, even if they later prove to have been unnecessary, are not improper actions or omissions.

19. REPLACEMENT OF CREW OR EQUIPMENT

19.1. [DP] Substitution of competitors is not allowed without prior written approval of the race committee.

19.2. [DP] Substitution of damaged or lost equipment is not allowed unless authorized in writing by the race committee. Requests for substitution shall be made to the committee at the first reasonable opportunity, which may be after the race.

20. EQUIPMENT AND MEASUREMENT CHECKS

20.1. A boat or equipment may be inspected at any time for compliance with the class rules, notice of race and sailing instructions.

20.2. [DP] When instructed by a race official on the water, a boat shall proceed to a designated

21. OFFICIAL VESSELS

21.1. Official vessels will be marked with the letter RC, J or Media.

22. [DP] SUPPORT TEAMS

22.1. Team leaders, coaches and other support persons shall stay outside areas where boats are racing from the time of the preparatory signal for the first start until all boats have finished or retired or the race committee signals a postponement, general recall or abandonment.

23.2. Support boats shall be marked with an identifying sign or sticker incorporating a number. Support boats are required to register with the RQYS Sailing Office to acquire this sign or sticker and to supply the skipper's details, boats call sign, contact number and competitor they are representing.

23. TRASH DISPOSAL

23.1. Trash may be placed aboard official [or support person] vessels.

24. BERTHING

24.1. [DP] Boats shall be kept in their assigned places while in the harbour.

25. HAUL-OUT RESTRICTIONS

25.1. VX ones and Etchells shall not be hauled out during the regatta.

25.2. [DP] Boats shall not be hauled out during the event except with and according to the terms of prior written permission of the race committee.

25.2. VX Ones will be permitted to berth (and raft up) in the docks located to the East of the main ramp and overflow onto the Docks 1 – 4 of the VIP docks to the West of the Fuel Dock, overnight on the nights of ~~45~~, 16 and 17 January 2021.

25.3. Etchells will be permitted to berth (and raft up) in the holding pen near the crane.

26. DIVING EQUIPMENT AND PLASTIC POOLS

26.1. Underwater breathing apparatus and plastic pools or their equivalent shall not be used around keelboats between the preparatory signal of the first race and the end of the last race of the event.

26.2. Keelboats shall not be cleaned below the waterline by any means during the event from 45th

(ADD) 16th January 2021 0900 hrs until 17th January 2021 1700 hrs.

- 26.3 VX Ones or Etchells shall not be cleaned below the waterline by any means between the time they are launched and the end of the event.

27. PRIZES

- 27.1. Prizes will be given in each eligible class/division for 1st, 2nd and 3rd.
27.2 Other prizes may be awarded at the discretion of the race committee.

28. RISK STATEMENT

- 28.1. RRS 3 states: 'The responsibility for a boat's decision to participate in a race or to continue to race is hers alone.' By participating in this event each competitor agrees and acknowledges that sailing is a potentially dangerous activity with inherent risks. These risks include strong winds and rough seas, sudden changes in weather, failure of equipment, boat handling errors, poor seamanship by other boats, loss of balance on an unstable platform and fatigue resulting in increased risk of injury. **Inherent in the sport of sailing is the risk of permanent, catastrophic injury or death by drowning, trauma, hypothermia or other causes.**

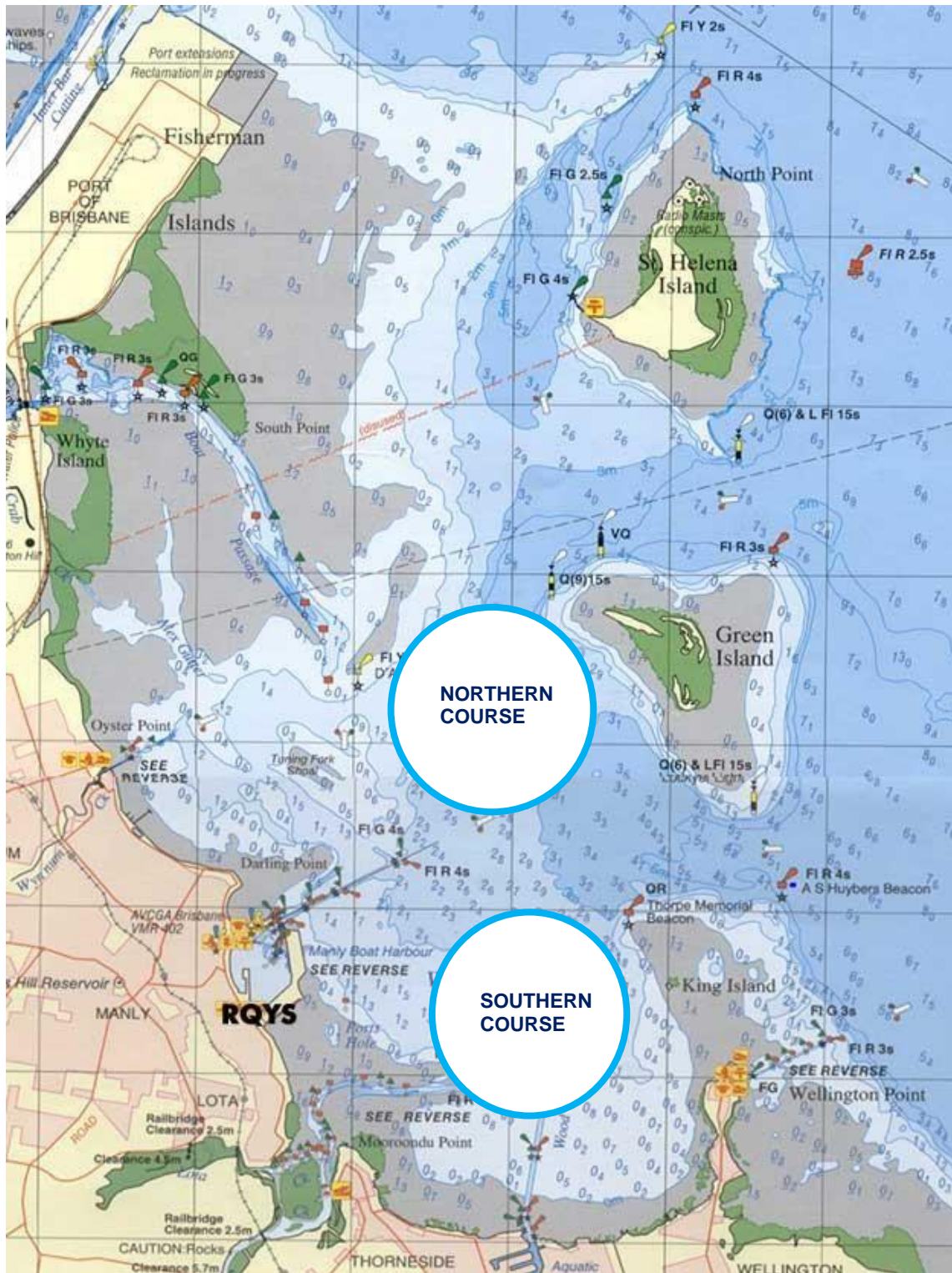
29. INSURANCE

- 29.1. Each participating boat shall be insured with valid third-party liability insurance with a minimum cover of \$10,000,000 per incident or the equivalent.

Attachment 1

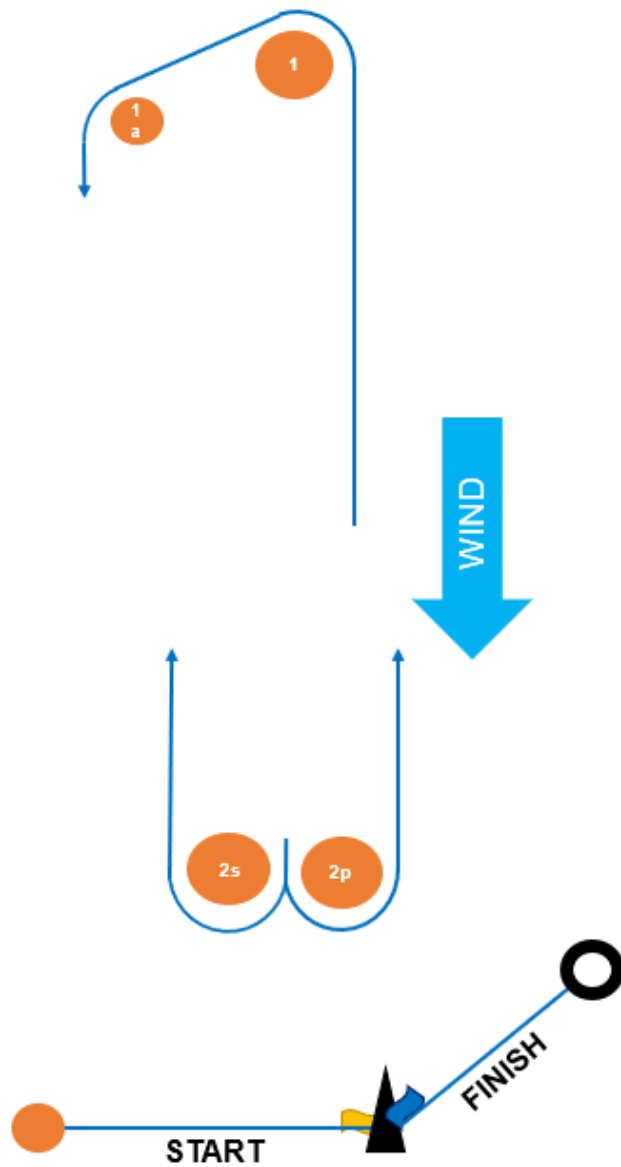
Class	Max Number of Races	Class Flag	Target Time	Time Limit	Finish Window	Course Allocation
29er	8-(ADD) 6	Red 29er Insignia/ White Background	30	45	10	Northern
Etchells	8-(ADD) 6	White with Blue Class Insignia	40	60	15	Northern
Finn	8-(ADD) 6	Blue Insignia/ White Background	40	60	15	Northern
Flying 11	8-(ADD) 6	Blue Flying 11 Insignia/ White Background	40	60	15	Southern
Hobie 16	8-(ADD) 6	Black Class Insignia/Blue Background	40	60	15	Northern
Laser 4.7	8-(ADD) 6	Red Insignia/ Yellow Background	40	60	15	Southern
Laser Radial	8-(ADD) 6	Red Insignia/ Green Background	40	60	15	Southern
Laser Standard	8-(ADD) 6	White with Red Class Insignia	40	60	15	Southern
Mixed Catamarans	8-(ADD) 6	Hobie 16 Class Flag Blue with Black Class Insignia	30	45	10	Northern
Nacra 15	8-(ADD) 6	Blue/Black Insignia with White Background	30	45	10	Northern
Northern Course - Mixed	8-(ADD) 6	Yellow Flag	40	60	15	Northern
Optimist Green	8-(ADD) 6	White "O" insignia / green background	30	50	15	Southern
Optimist Intermediate/Open	8-(ADD) 6	Black "O" Insignia/ White Background	40	60	15	Southern
Raceboard	8-(ADD) 6	Red Raceboard Insignia/White Background	30	45	10	Southern
Southern Course – Mixed	8-(ADD) 6	Yellow Flag	40	60	15	Southern
VX One	8-(ADD) 6	VX One Insignia/ White Background	40	60	15	Northern
Windfoil	8-(ADD) 6	Red and Blue Formula Foil Insignia/White Background	25	40	10	Southern
F18	8-(ADD) 6	Hobie 16 Class Flag Blue with Black Class Insignia	30	45	10	Northern
(ADD) Moths	(ADD) 6	(ADD) Black Moth Insignia/White Background	(ADD) 30	(ADD) 45	(ADD) 10	(ADD) Southern
(ADD) Wazsp	(ADD) 6	(ADD) Black Moth Insignia/White Background	(ADD) 30	(ADD) 45	(ADD) 10	(ADD) Southern

Attachment 2 – Course Areas



Attachment 3 – Northern Course

CODE	COURSE	MARKS DESCRIPTION
L1	Start - 1 - 1a - 2s/p - Finish	Marks 1, 2s & 2p: Orange Inflatable Mark 1a: Orange Teardrop
L2	Start - 1 - 1a - 2s/2p - 1 - 1a - 2s/2p - Finish	Start Pin: Orange Teardrop Finish Pin: Black and White Inflatable
L3	Start - 1 - 1a - 2s/2p - 1 - 1a - 2s/2p - 1 - 1a - 2s/2p - Finish	Change Mark: Yellow Inflatable



Attachment 3 – Southern Course

CODE	COURSE	MARKS DESCRIPTION
L1	Start – 1 – 2s/p - Finish	Marks 1, 2s & 2p: Yellow Inflatable Marks 1a: Purple teardrop Start Pin: Orange Teardrop
L2	Start – 1 – 2s/2p – 1 – 2s/2p - Finish	Start Pin: Orange Teardrop Finish Pin: Black and White Inflatable Change Mark: Orange Inflatable
L2a	Start – 1a – 2s/2p – 1a – 2s/2p - Finish	
L3	Start – 1 – 2s/2p – 1 – 2s/2p – 1 – 2s/2p - Finish	

