

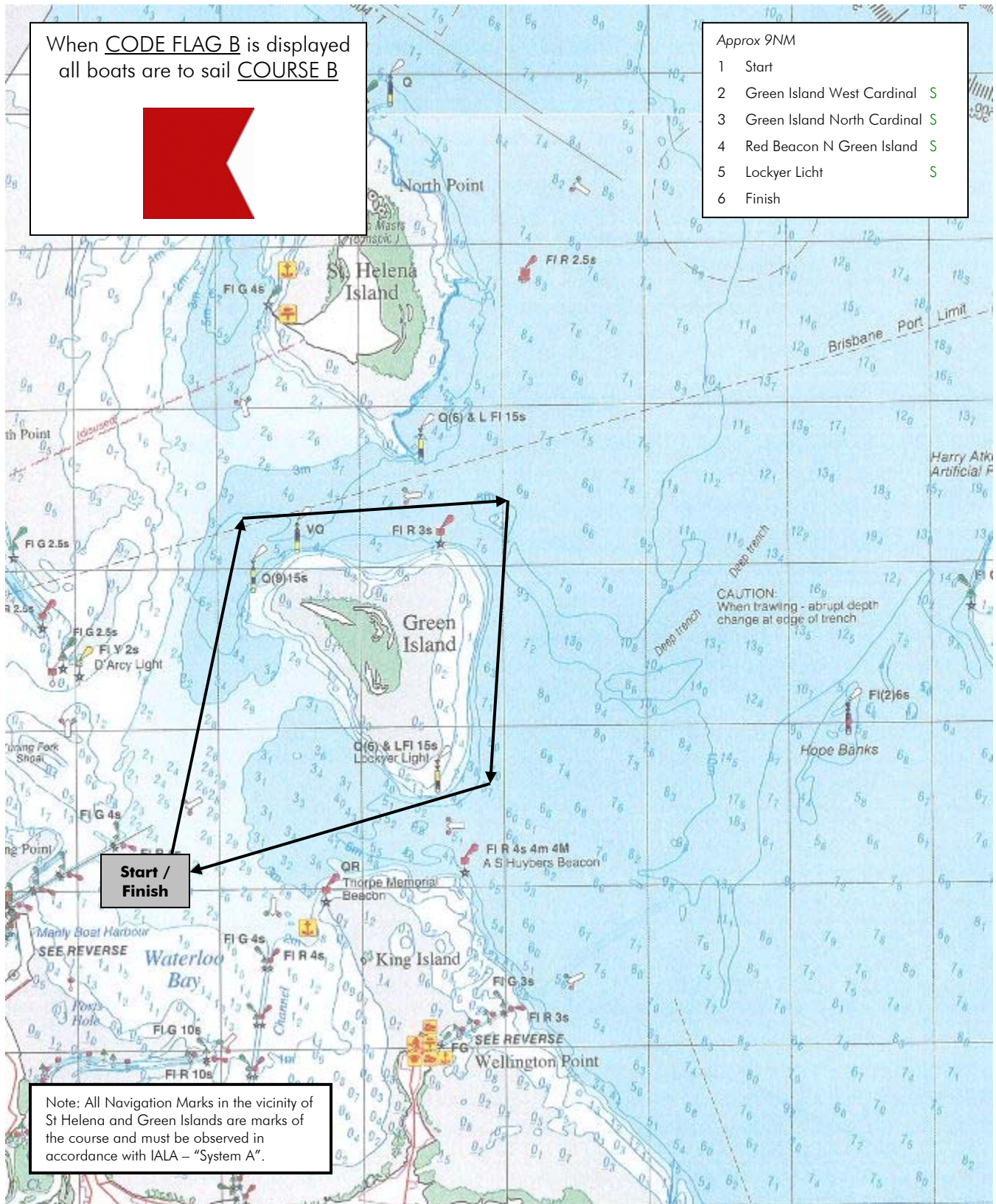
COURSE B

When CODE FLAG B is displayed all boats are to sail COURSE B



Approx 9NM

- 1 Start
- 2 Green Island West Cardinal S
- 3 Green Island North Cardinal S
- 4 Red Beacon N Green Island S
- 5 Lockyer Light S
- 6 Finish



Note: All Navigation Marks in the vicinity of St Helena and Green Islands are marks of the course and must be observed in accordance with IALA – "System A".

Note: charts illustrated in these sailing instructions show the general racing area – **Not for Navigation**

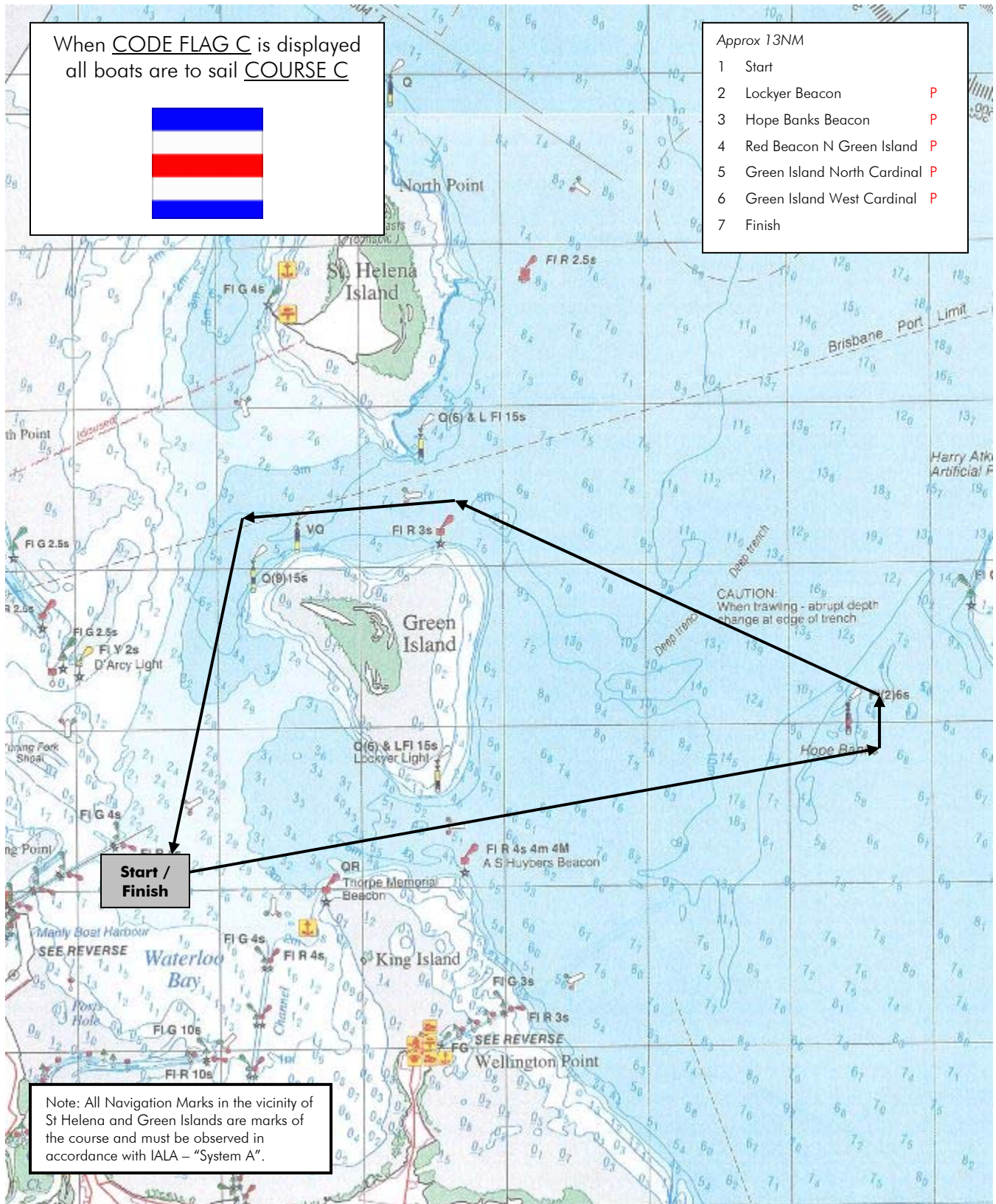
COURSE C

When CODE FLAG C is displayed
all boats are to sail COURSE C



Approx 13NM

- 1 Start
- 2 Lockyer Beacon P
- 3 Hope Banks Beacon P
- 4 Red Beacon N Green Island P
- 5 Green Island North Cardinal P
- 6 Green Island West Cardinal P
- 7 Finish



Note: All Navigation Marks in the vicinity of
St Helena and Green Islands are marks of
the course and must be observed in
accordance with IALA – "System A".

Note: charts illustrated in these sailing instructions show the general racing area – **Not for Navigation**

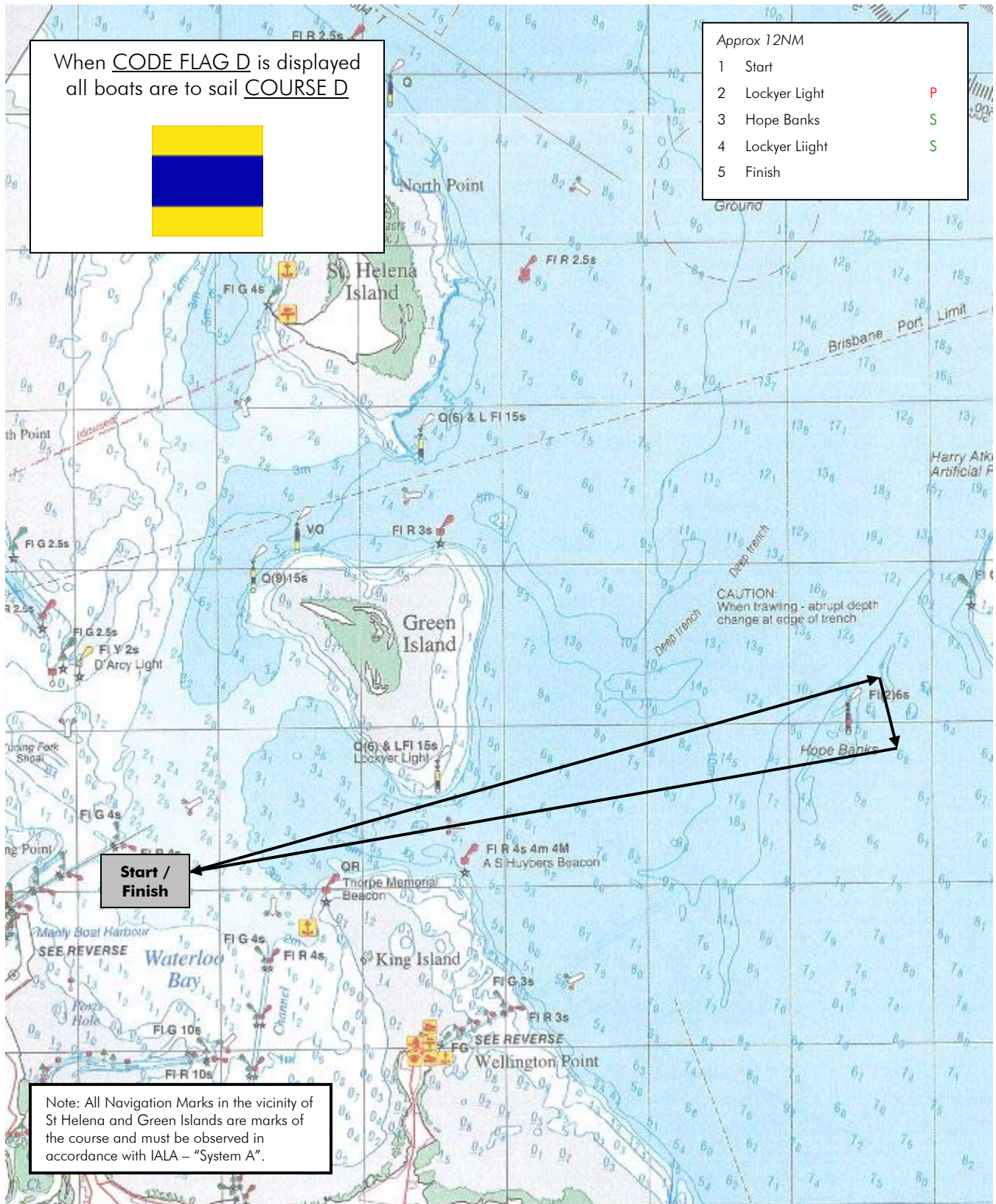
COURSE D

When CODE FLAG D is displayed
all boats are to sail COURSE D



Approx 12NM

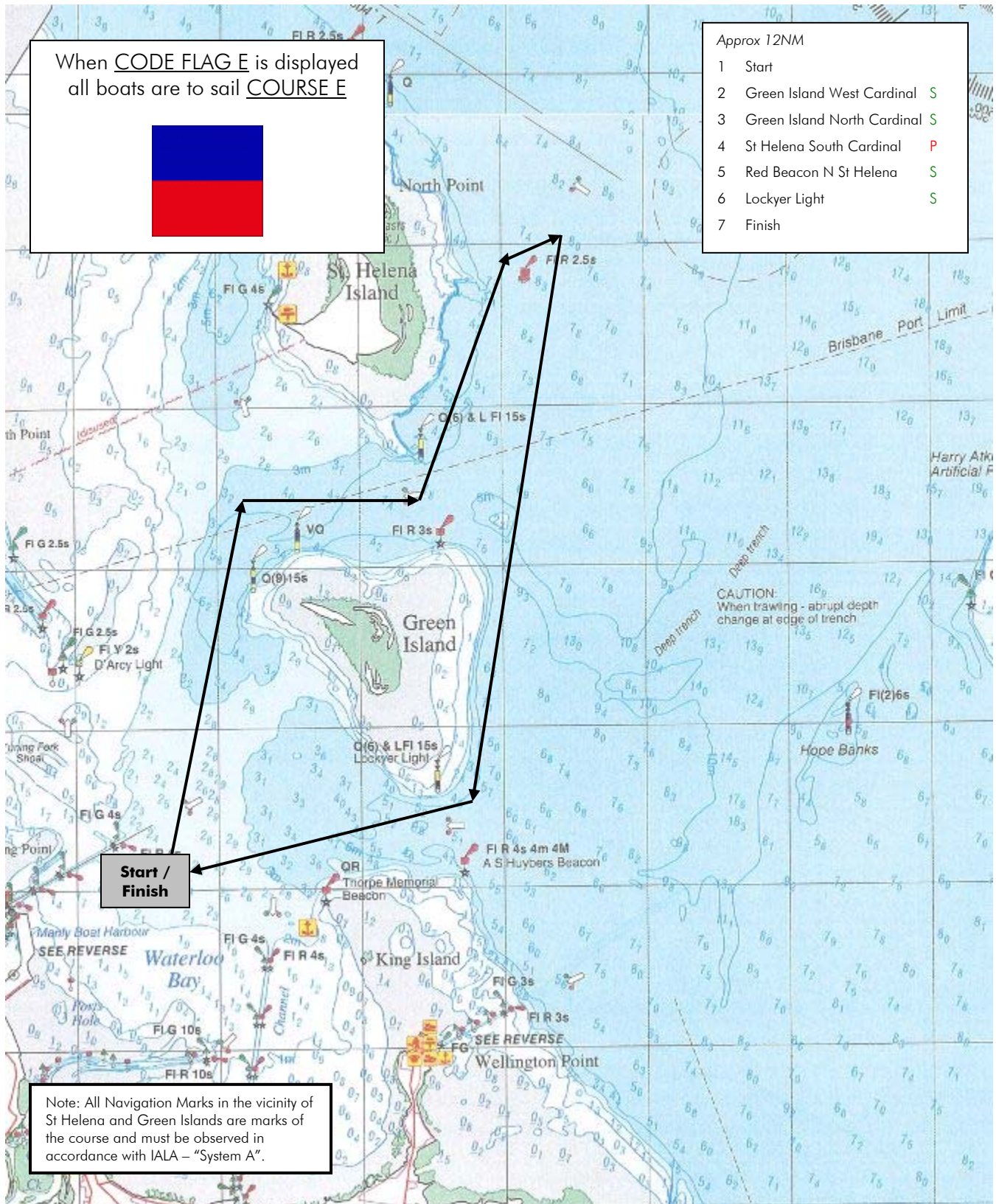
- | | | |
|---|---------------|---|
| 1 | Start | |
| 2 | Lockyer Light | P |
| 3 | Hope Banks | S |
| 4 | Lockyer Light | S |
| 5 | Finish | |



Note: All Navigation Marks in the vicinity of St Helena and Green Islands are marks of the course and must be observed in accordance with IALA – "System A".

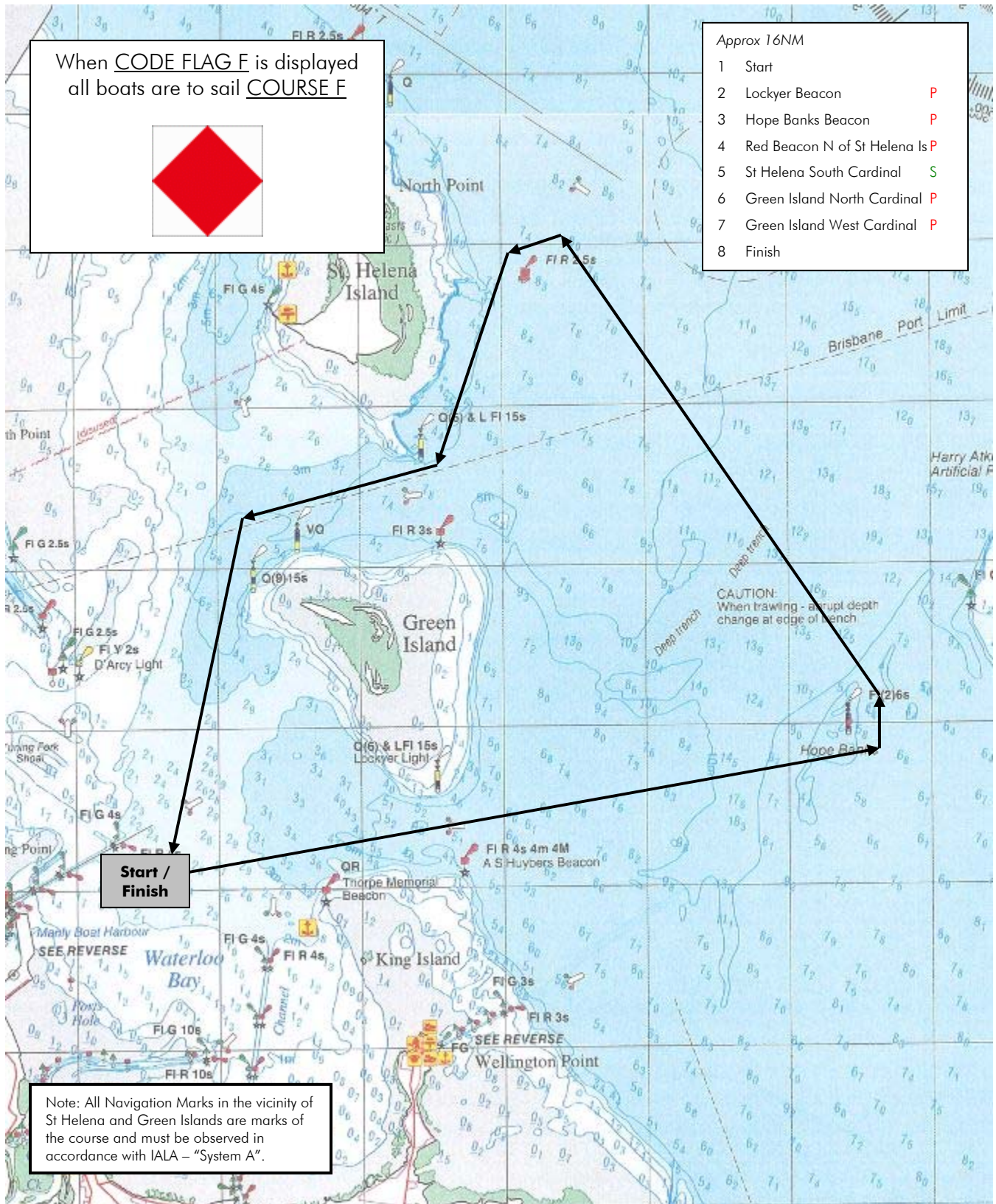
Note: charts illustrated in these sailing instructions show the general racing area – **Not for Navigation**

COURSE E



Note: charts illustrated in these sailing instructions show the general racing area – **Not for Navigation**

COURSE F



Note: charts illustrated in these sailing instructions show the general racing area – **Not for Navigation**