



2009/2010 WAGS SAILING INSTRUCTIONS

Organised & Hosted By
Royal Queensland Yacht Squadron Ltd.

125 Years of Sailing

1. RULES

- 1.1 The regatta will be governed by the rules as defined in *The Racing Rules of Sailing*.
- 1.2 Where lifelines complying with YA SR Part 1 Section 3 Rule 3.12 have not been fitted, all crew while racing shall wear a visible personal floatation device as per YA SR Part 1 Section 5.
- 1.3 All boats using outboard engines shall comply with YA SR Part 1 Section 3 Rule 3.24.4.

2. ELIGIBILITY

WAGS races are open to all Monohulls and Multihulls (both trailerable and fixed keel) on the register of an affiliated yacht or sailing club.

3. SAIL RESTRICTIONS

All boats are to sail with Jibs and Mains only. Loose luffed headsails are not permitted.

4. SCHEDULE OF RACES

Day	Event	Time
Each Wednesday <i>Also incorporating</i> - Christmas WAGS - Boxing Day WAGS - EKKA WAGS - ANZAC Day WAGS	Registration – WAGS Table in the RQ Bar	Between 1200 & 1330
	Handicaps (Start Times) Announcement	1330
	Racing	As per allocated start time
	Presentation – RQ Boardwalk	ASAP after racing
<i>Please note: Official Start Time is EST (to check call 1194)</i>		

5. RACING AREAS

All races will be conducted on both Waterloo and Moreton Bays west and east of Green Island.

6. THE COURSES

- 6.1 All courses start and finish at the Manly Harbour Entrance outer leads.
- 6.2 The courses to be sailed will be as per the course descriptions at the end of these Sailing Instructions.
- 6.3 Courses may be shorted as per rule 32.

7. MARKS

All marks are Navigation Marks – When a navigation mark is nominated as a mark of a course it shall be left in the manner described in the course booklet, otherwise all navigation marks shall be observed in the correct manner.

8. THE START

- 8.1 Races will be started as follows:
 - 8.1.1 Boats shall start no earlier than their allocated start time.
 - 8.1.2 The Race Officer (starter) will *usually* raise an arm 10 seconds prior to the minute and lower the arm on the minute.
 - 8.1.3 A sound signal will be given to any yacht starting early and therefore they are required to restart.
 - 8.1.4 This changes rule 26.
- 8.2 All boats shall keep clear of the start line and not cross in either direction prior to their designated start time.
- 8.3 A boat re-starting shall keep clear of a boat starting.
- 8.4 The starting line will be between a staff displaying an orange flag on the start boat at the starboard end and the East Port Lateral Beacon at the entrance to the Manly Harbour at the port end.

- 8.5 In the case where the start boat is not on station the start line shall be an extension of the Eastern Port and Starboard Lateral Beacons to the south and within 100m. In these circumstances boats are required to start at their allocated starting time.
- 8.6 The course flag confirming the course to be sailed will be flown from the start boat.

9. THE FINISH

- 9.1 The finishing line will be between a staff displaying an orange flag on the race committee vessel and the East Port Lateral Beacon to the entrance of Manly Harbour.
- 9.2 When a finish boat is not on station boats are to record and report their own finish time to WAGS Race Control on VHF Channel 72 or in person at WAGS Table in the RQ Bar by no later than 1750 hours.

10. PENALTY SYSTEM

For all boats rule 44.1 is changed so that the Two-Turns Penalty is replaced by the One-Turn Penalty.

11. TIME LIMIT

The time limit for all boats to be finished is 1700 hours.

12. PROTESTS

All WAGS races are intended to that of a fun and enjoyable nature and therefore there should be no reason to Protest. Competitors are encouraged to resolve their differences in a respectable manner. However should an incident occur that can not be resolved competitors are requested to advise the RQYS Marine Sports Manager and a protest will be arranged.

13. SCORING AND HANDICAPS

- 13.1 Handicap start times will be allocated to each boat upon registration.
- 13.2 Each race is an individual race and will be scored as such. No season point score applies to WAGS races.

14. SAFETY REGULATIONS

- 14.1 All competitors intending to start shall report to the WAGS Table located inside the RQ Bar by no later than 1330 hours to register for the day's race.
- 14.2 A boat that retires from a race shall notify the race committee as soon as possible.

15. TRASH DISPOSAL

Boats shall not put trash in the water. Trash may be placed aboard support and race committee boats.

16. RADIO COMMUNICATION

- 16.1 The Race Committee may communicate information to the competing boats during the course of the race. All boats are to monitor VHF Channel 72 for the duration of the race.
- 16.2 Except in an emergency, a boat shall neither make radio transmissions while racing nor receive radio communications not available to all boats. This restriction also applies to mobile telephones.

17. PRIZES

- 17.1 Monohull – 1st, 2nd, 3rd and 4th over the line.
- 17.2 Multihulls – 1st and 2nd over the line.
- 17.3 Closest to the line at official starting time.
- 17.4 Other prizes may be awarded at the direction of the race committee.

18. DISCLAIMER OF ENTRY

Competitors participate in the regatta entirely at their own risk. See rule 4, Decision to Race. The organising authority will not accept any liability for material damage or personal injury or death sustained in conjunction with or prior to, during, or after the regatta.

19. INSURANCE

Each participation boat shall be insured with valid third-party liability insurance with a minimum cover of AUS\$5m (recommended AUS\$10m).

20. RACE OFFICIALS

All official directions during the course of the race will be advised by the race officer on board the start/finish boat. This boat will be marked with an RC flag. To ensure there is no confusion during races, no other boats are to issue directions unless approved by the Race Officer or the RQYS Marine Sports Manager.

21. RACE CANCELLATION

- 21.1 Racing will not occur if there is a strong wind warning or gale wind warning present after 1130 hours on the day of racing.
- 21.2 Any decision to race, postpone or abandon will be made by the RQYS Marine Sports Manager after consultation with either the Race Officer, Member of Sailing Committee or General Manager.
- 21.3 A decision to race on any given day does not relieve any competitor of his/her obligation under rule 4, Decision to race.

22. ADDITIONAL INFORMATION

For additional information please contact:

- 22.1 RQYS Marine Sports Manager – 07 3396 8666.
- 22.2 WAGS Officials at the WAGS Table on the day of racing.
- 22.3 Race Officer onboard the Start/Finish boat.

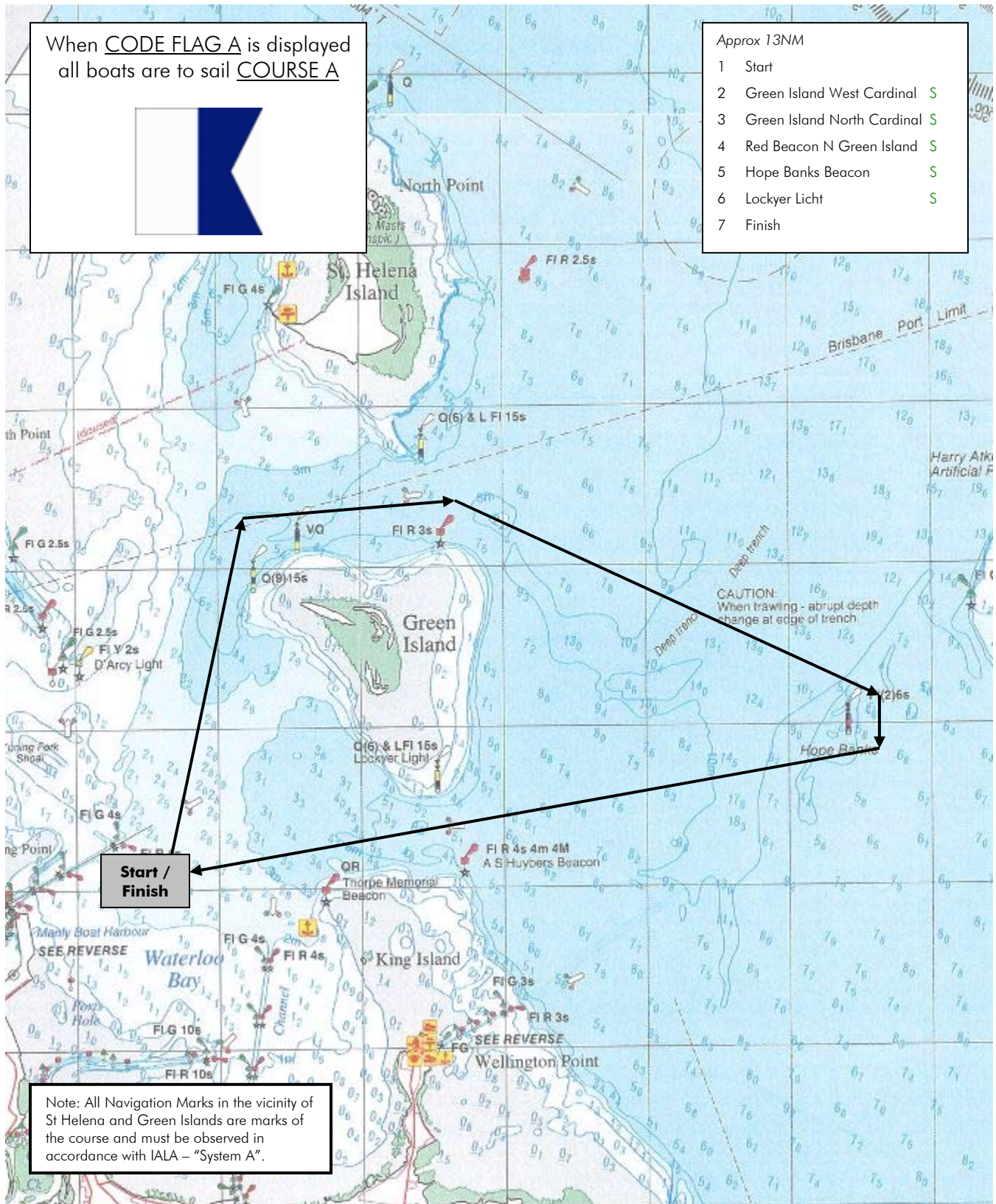
COURSE A

When CODE FLAG A is displayed all boats are to sail COURSE A



Approx 13NM

- 1 Start
- 2 Green Island West Cardinal S
- 3 Green Island North Cardinal S
- 4 Red Beacon N Green Island S
- 5 Hope Banks Beacon S
- 6 Lockyer Light S
- 7 Finish



Note: All Navigation Marks in the vicinity of St Helena and Green Islands are marks of the course and must be observed in accordance with IALA – "System A".

Note: charts illustrated in these sailing instructions show the general racing area – **Not for Navigation**

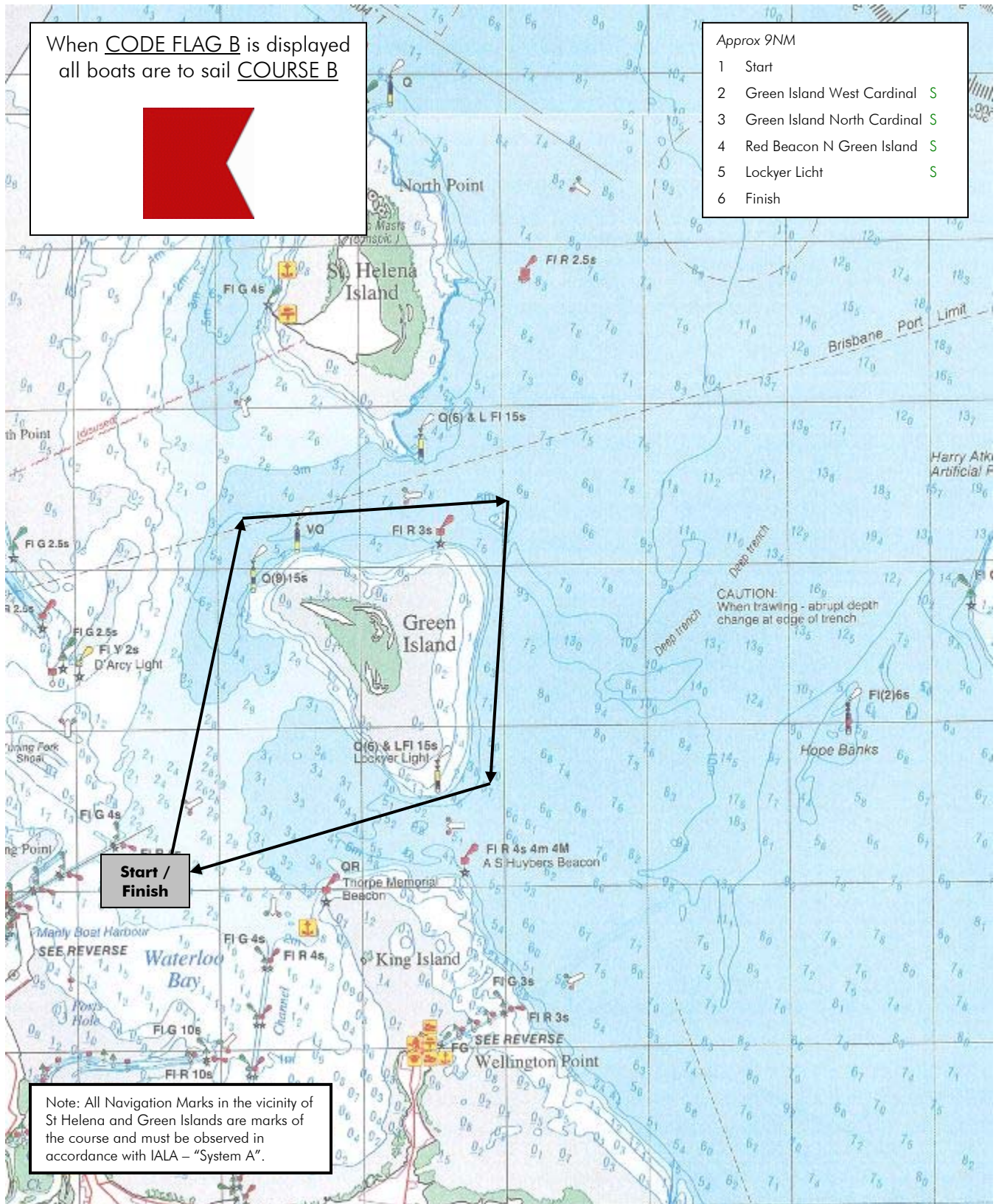
COURSE B

When CODE FLAG B is displayed all boats are to sail COURSE B



Approx 9NM

- 1 Start
- 2 Green Island West Cardinal S
- 3 Green Island North Cardinal S
- 4 Red Beacon N Green Island S
- 5 Lockyer Light S
- 6 Finish



Start / Finish

Note: All Navigation Marks in the vicinity of St Helena and Green Islands are marks of the course and must be observed in accordance with IALA – "System A".

Note: charts illustrated in these sailing instructions show the general racing area – **Not for Navigation**

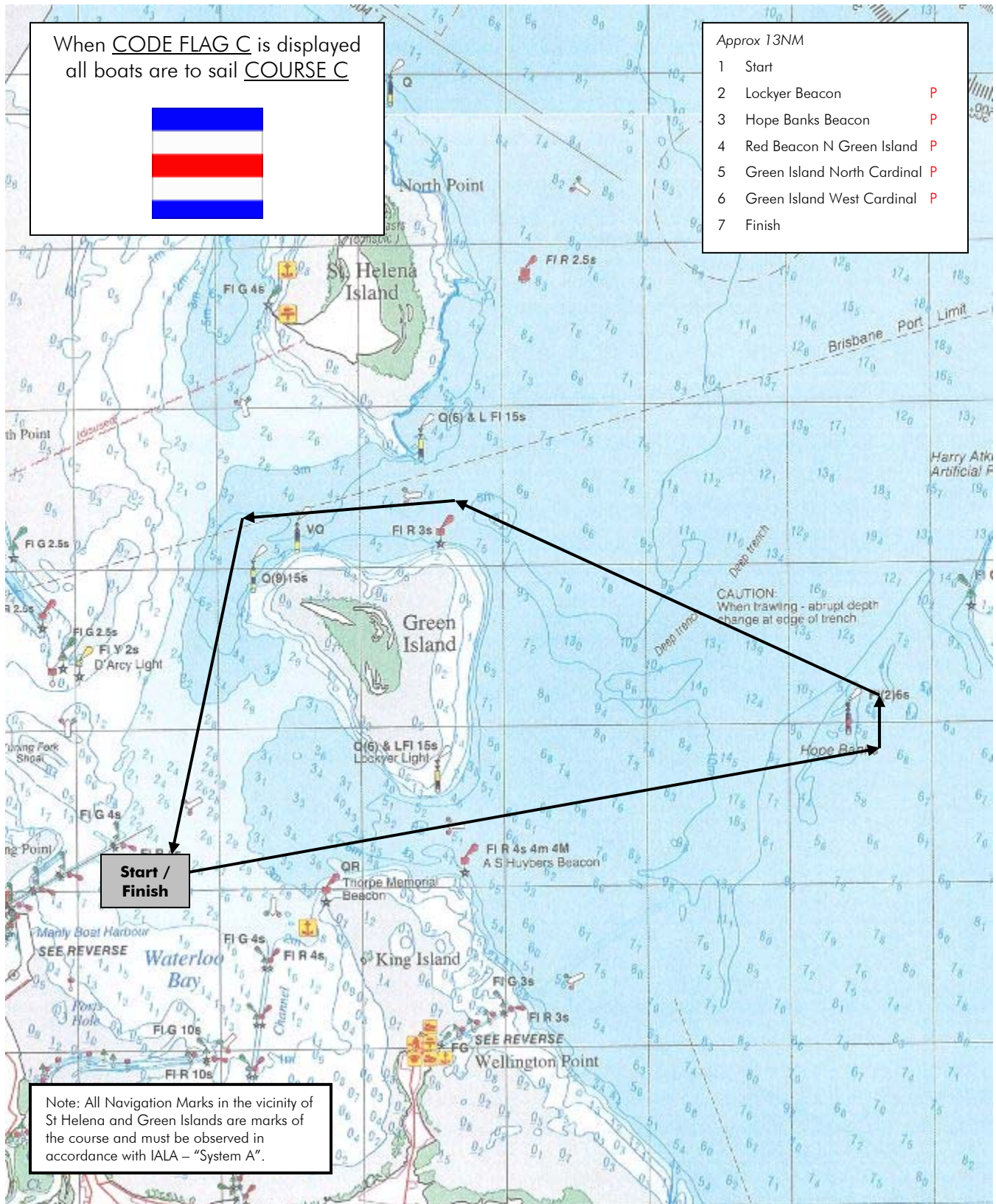
COURSE C

When CODE FLAG C is displayed
all boats are to sail COURSE C



Approx 13NM

- 1 Start
- 2 Lockyer Beacon P
- 3 Hope Banks Beacon P
- 4 Red Beacon N Green Island P
- 5 Green Island North Cardinal P
- 6 Green Island West Cardinal P
- 7 Finish



Note: All Navigation Marks in the vicinity of
St Helena and Green Islands are marks of
the course and must be observed in
accordance with IALA – "System A".

Note: charts illustrated in these sailing instructions show the general racing area – **Not for Navigation**

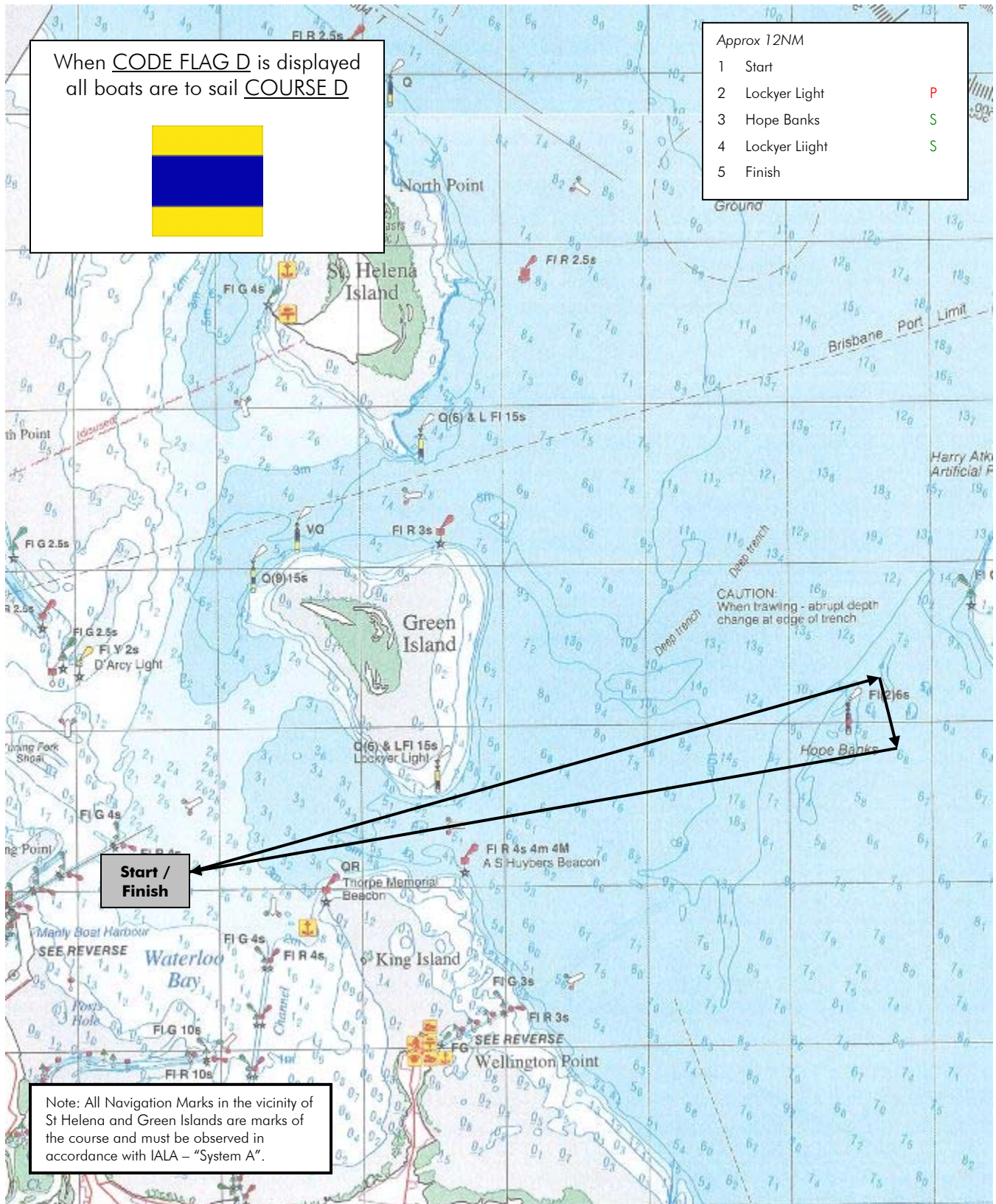
COURSE D

When CODE FLAG D is displayed
all boats are to sail COURSE D



Approx 12NM

- | | | |
|---|---------------|---|
| 1 | Start | |
| 2 | Lockyer Light | P |
| 3 | Hope Banks | S |
| 4 | Lockyer Light | S |
| 5 | Finish | |

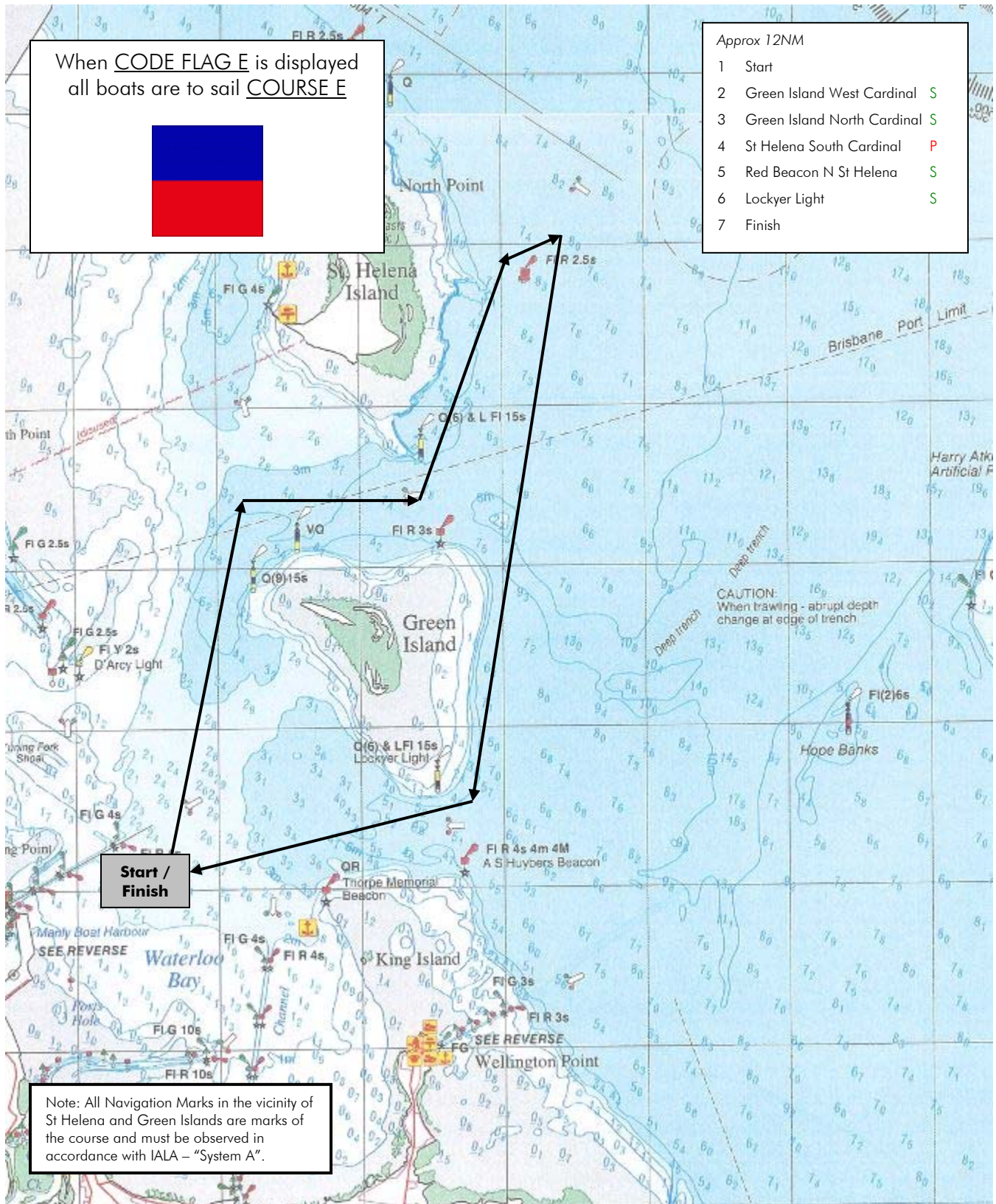


**Start /
Finish**

Note: All Navigation Marks in the vicinity of St Helena and Green Islands are marks of the course and must be observed in accordance with IALA – "System A".

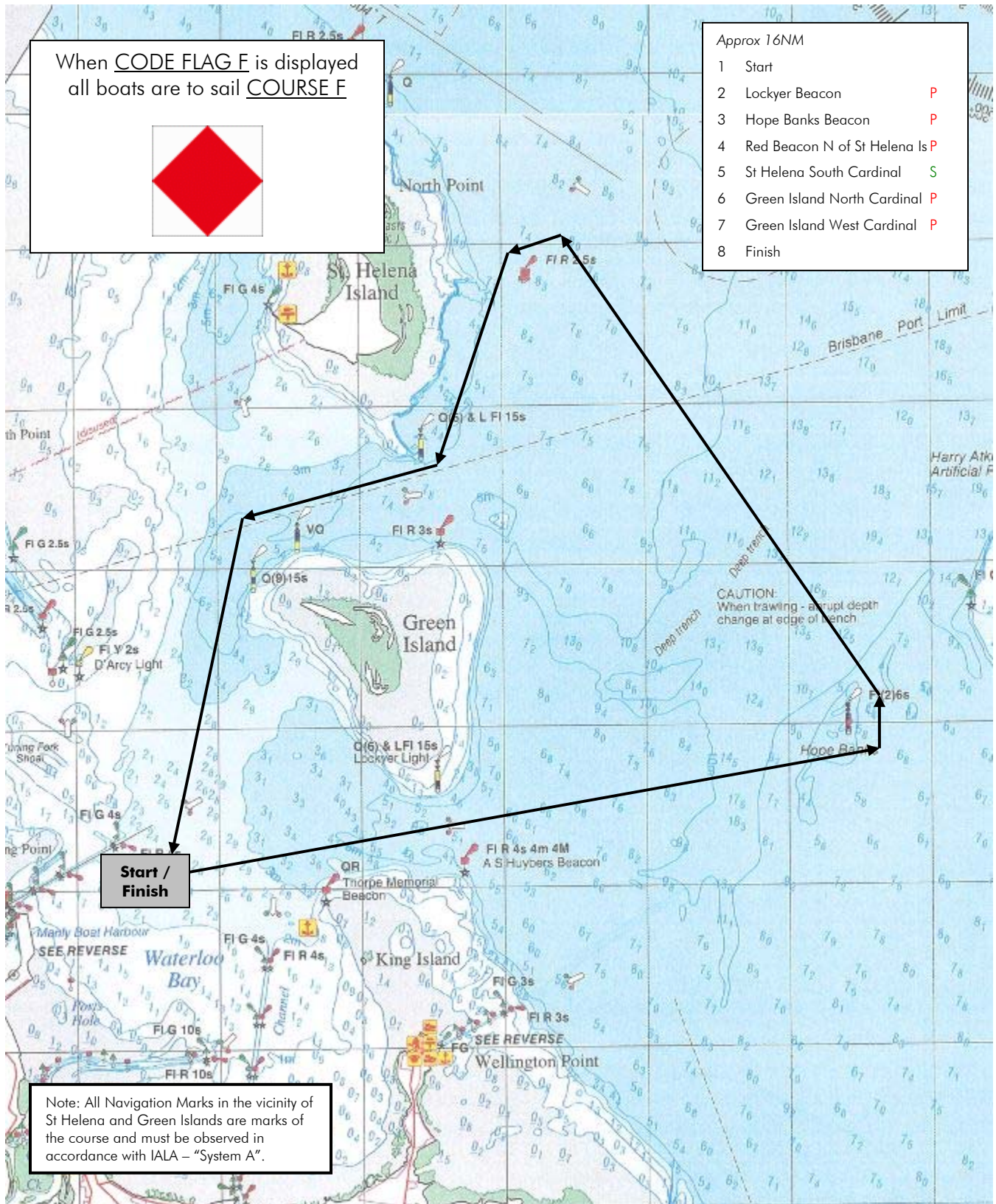
Note: charts illustrated in these sailing instructions show the general racing area – **Not for Navigation**

COURSE E



Note: charts illustrated in these sailing instructions show the general racing area – **Not for Navigation**

COURSE F



Note: charts illustrated in these sailing instructions show the general racing area – **Not for Navigation**

WAGS ENTRY & DECLARATION

Boat Name		Sail Number	
Owner/Skipper			
Address			
Mobile Phone			
Email			
Yacht Club		YA#	
Boat Design			
Hull Colour		Hull Material	
LOA		Beam	
<p>Declaration:</p> <p>Competitors participate in the regatta entirely at their own risk. See rule 4, Decision to Race. The organising authority will not accept any liability for material damage or personal injury or death sustained in conjunction with or prior to, during, or after the regatta.</p> <p>By signing this declaration a boat declares they hold all the necessary equipment as outlined in YA Special Regulations Category 6.</p> <p><input type="checkbox"/> I hereby agree to the terms and conditions.</p>			
Signature		Date	
<p>Please Note: This WAGS Entry and Declaration form is valid for 12 months from date signed.</p>			