



2011 Australian Sports Boat Association National Championship

29 December 2010 – 2 January 2011

SAILING INSTRUCTIONS



Organised By: Australian Sports Boat Association
Hosted By: Royal Queensland Yacht Squadron

1. RULES

- 1.1 The regatta will be governed by the rules as defined in *The Racing Rules of Sailing 2009-2012*.
- 1.2 The Prescriptions and Special Regulations of Yachting Australia Inc. (YA) – Part 1 Category 6.
- 1.3 The Australian Sports Boat Association rules and [constitution](http://www.asba.org.au) will apply. (www.asba.org.au)
- 1.4 Rule 49.1 shall not apply to Melges 24 and Magic 25 Sports Boats if racing in compliance with their respective class rules and it is noted on the Sports Boats SMS Certificate that the racing incorporates hiking devices.

2. NOTICES TO COMPETITORS

Notices to competitors will be posted on the official notice board located outside the RQYS Marine Sports Office.

3. CHANGES TO SAILING INSTRUCTIONS

Any change to the Sailing Instructions will be posted before 0930 hours on the day it will take effect, except that any change to the schedule of races will be posted by 1730 hours on the day before it will take effect.

4. SIGNALS MADE ASHORE

- 4.1 Signals made ashore will be displayed on the RQYS Official Flag Pole located outside the RQYS Clubhouse.
- 4.2 When flag AP is displayed ashore '1 minute' is replaced with 'not less than 45 minutes' in the race signal AP.

5. SCHEDULE

Date	Event	Time / Warning Signal
Wednesday 29 December 2010	Competitors Meeting	1030
	Race 1 (Windward/Return)	1230
	Race 2 (Windward/Return)	ASAP after Race 1
	Annual General Meeting	1700 (TBC)
	Welcome BBQ	From 1830
Thursday 30 December 2010	Race 3 (Windward/Return)	1100
	Race 4 (Passage Race)	ASAP after Race 3
Friday 31 December 2010	Race 5 (Windward/Return)	1130
	Race 6 (Windward/Return)	ASAP after Race 5
	Race 7 (Windward/Return)	ASAP after Race 6
	New Years Eve Party (refer NOR 30)	From 1900
Saturday 1 January 2011	LAY DAY	
Sunday 2 January	Race 8 (Windward/Return)	1130
	Race 9 (Windward/Return)	ASAP after Race 8
	Presentation	ASAP after Racing

- 5.1 After a long postponement, to alert boats that a race or sequence of races will begin soon, an orange flag will be displayed with one sound at least four minutes before a warning signal is displayed.
- 5.2 On the last day of the regatta no warning signal will be made after 1530 hours.

6. CLASS FLAGS

Class Flags will be a white flag displaying the ASBA logo.

7. RACING AREAS

The racing areas will be in both Waterloo and Moreton Bay.

8. THE COURSES

The courses to be sailed are as per Attachments 1, 2, 3, 4 and 5.

9. MARKS

- 9.1 Mark 1, Gate Marks and the passage race Laid Mark will be orange inflatable buoys with Etchells in black.
- 9.2 Mark 2 and start/finish marks will be orange teardrop buoys.
- 9.3 When a navigation mark is nominated as a mark of a course it shall be left in the manner described, otherwise all navigation marks shall be observed in the correct manner.

10. THE START

- 10.1 Races will be started by using rule 26 with the warning signal made five (5) minutes before the starting signal.
- 10.2 The starting line will be between a staff displaying an orange flag on the start boat at the starboard end and the port-end starting mark.
- 10.3 A boat starting later than 15 minutes after her starting signal will be scored Did Not Start without a hearing. This changes rule A4.
- 10.4 If any part of a boat's hull, crew or equipment is on the course side of the starting line during the two minutes before her starting signal and she is identified, the race committee will attempt to broadcast her sail number on VHF Channel 72. Failure to make a broadcast or to time it accurately will not be grounds for redress. This changes rule 62.1(a).

11. CHANGE OF THE NEXT LEG OF THE COURSE

- 11.1 To change the next leg of the course, the race committee will move the original mark (or the finishing line) to a new position.
- 11.2 Except at a gate, boats shall pass between the race committee boat signaling the change of the next leg and the nearby mark, leaving the mark to port and the race committee boat to starboard. This changes rule 28.1.

12. THE FINISH

The finishing line will be between a staff displaying an orange flag on the finish boat and the finishing mark.

13. PENALTY SYSTEM

For all boats rule 44.1 is changed so that the Two-Turns Penalty is replaced by the One-Turn Penalty.

14. PROTESTS AND REQUESTS FOR REDRESS

- 14.1 Protest forms are available at the race office located at the RQYS Marine Sports office. Protests and requests for redress or reopening shall be delivered there within the appropriate time limit.
- 14.2 The protest time limit is 90 minutes after the last boat has finished the last race of the day.
- 14.3 Notices will be posted no later than 30 minutes after the protest time limit to inform competitors of hearings in which they are parties or named as witnesses. Hearings will be held in the protest room, located next to the RQYS Marine Sports office in the Olympic Room beginning at the time posted.
- 14.4 Notices or protests by the race committee will be posted to inform boats under rule 61.1(b). Breaches of instructions 16, 19, 20, 21, 22, 23 and 24 will not be grounds for protest by a boat. This changes rule 60.1(a). Penalties for these breaches may be less than disqualification if the protest committee so decided. The scoring abbreviation for a discretionary penalty imposed under this instruction will be DPI.
- 14.5 On the last scheduled day of racing a request for reopening a hearing shall be delivered

- (a) within the protest time limit if the requesting party was informed of the decision on the previous day;
 - (b) no later than 30 minutes after the requesting party was informed of the decision on that day.
- This changes rule 66.

- 14.6 On the last scheduled day of racing a request for redress based on a protest committee decision shall be delivered no later than 30 minutes after the decision was posted. This changes rule 62.2.

15. SCORING

- 15.1 The Low Point Scoring System of Appendix A will apply.
- 15.2 Four (4) races are required to be completed to constitute a series.
- 15.3 (a) When from four (4) to six (6) races have been completed, a boat's series score will be the total of her race scores.
(b) When seven (7) or more races have been completed, a boat's series score will be the total of her race scores excluding her worst score.

16. SAFETY REGULATIONS

- 16.1 All boats shall SIGN ON at least 10 minutes before the warning signal by contacting the race committee vessel on VHF Channel 72 advising the name of the boat, number of persons on board (POB) and receive acknowledgement.
- 16.2 A boat that retires from a race shall notify the race committee as soon as possible.

17. REPLACEMENT OF CREW OR EQUIPMENT

- 17.1 Substitution of skippers will not be allowed unless in extreme circumstances with written approval of the race committee.
- 17.2 Substitution of crew will not be allowed without prior written approval of the race committee.
- 17.3 Each boat shall maintain the same number of crew for each day of racing.
- 17.4 Substitution of damaged or lost equipment will not be allowed unless authorised by the race committee. Requests for substitution shall be made to the committee at the first reasonable opportunity.

18. EQUIPMENT AND MEASUREMENT CHECKS

A boat or equipment may be inspected at any time for compliance with the class rules and sailing instructions. On the water, a boat can be instructed by a race committee equipment inspector or measurer to proceed immediately to a designated area for inspection.

19. ADVERTISING

All boats may be required to display advertising provided by the sponsors.

20. SUPPORT BOATS

Team leaders, coaches and other support personnel shall stay outside areas where boats are racing from the time of the preparatory signal for the first class to start until all boats have finished or retired or the race committee signals a postponement, general recall or abandonment.

21. TRASH DISPOSAL

Boats shall not put trash in the water. Trash may be placed aboard support and race committee boats.

22. HAUL-OUT RESTRICTIONS

Boats shall not be hauled out during the regatta except with and according to the terms of prior written permission of the race committee.

23. DIVING EQUIPMENT AND PLASTIC POOLS

Underwater breathing apparatus and plastic pools or their equivalent shall not be used around keelboats between the preparatory signal of the first race and the end of the regatta.

24. RADIO COMMUNICATION

Except in an emergency, a boat shall neither make radio transmissions while racing nor receive radio communications not available to all boats. This restriction also applies to mobile telephones.

25. PRIZES AND DIVISIONS

Prizes will be given as follows:

25.1 The overall winner on SMS will be the 2010 ASBA Australian Sports Boat Titles Champion

25.2 1st, 2nd, 3rd, 4th and 5th on SMS

25.3 Other prizes may be awarded

26. DISCLAIMER OF ENTRY

Competitors participate in the regatta entirely at their own risk. See rule 4, Decision to Race. The organising authority will not accept any liability for material damage or personal injury or death sustained in conjunction with or prior to, during, or after the regatta.

27. INSURANCE

Each participating boat shall be insured with valid third-party liability insurance with a minimum cover of \$5m per event or equivalent.

28. HANDICAPS

Sports Boat Measurement System (SMS) – It is the responsibility of each boat to produce a valid SMS Certificate which the boats SMS Handicap will be taken from. BHC Handicaps will be assigned by the Royal Queensland Yacht Squadron Handicapper.

29. RESULTS

During the regatta results will be posted on the RQYS Marine Sports section of the website.

RQYS Results – <http://results.rqys.com.au>

RQYS Website – www.rqys.com.au

RQYS Marine Sports – <http://sailing.rqys.com.au>

30. NEW YEARS EVE PARTY

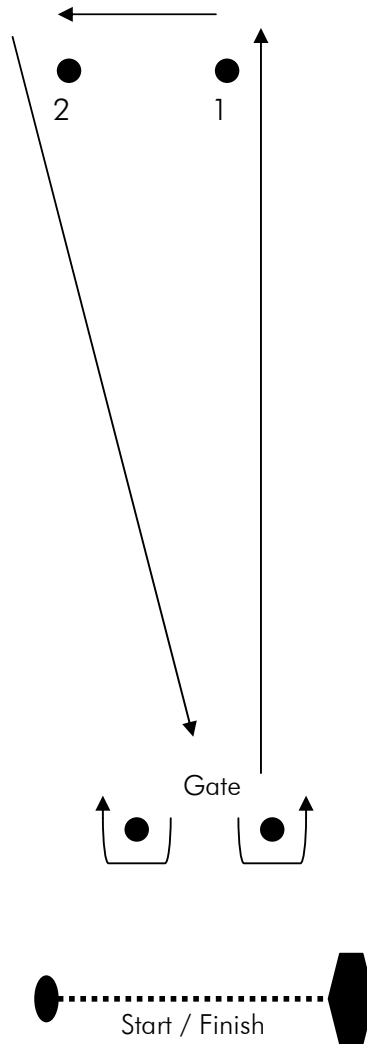
- DJ on the Boardwalk from 1930 until 1230
- Boardwalk Café open for dinner from 1800 – Bookings Preferred
- Purchase takeaways prior to midnight

ATTACHMENT 1

Windward/Return Course

Mark 1 and Gate Marks will be orange inflatable buoys with Etchells in black.
 Mark 2 and start/finish marks will be orange teardrop buoys.

Designation	Course
D2	Start – 1 – 2 – Gate – 1 – 2 – Finish
D3	Start – 1 – 2 – Gate – 1 – 2 – Gate – 1 – 2 – Finish



ATTACHMENT 2

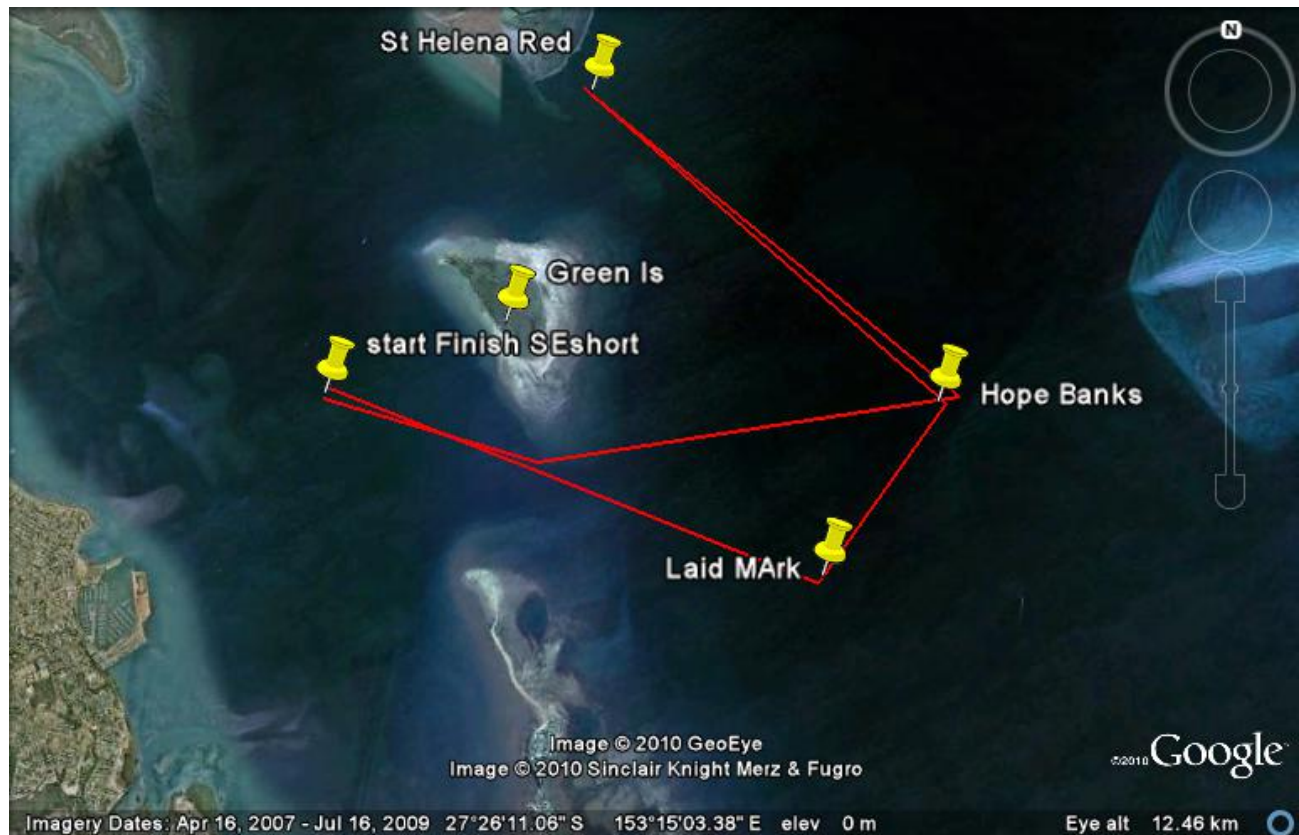
Passage Race

Course Designation: Course 14

14 nautical mile course

Start
Laid Mark (port)
Hope Banks (port)
St Helena Red (port)
Hope Banks (starboard)
Finish

Not for navigation



ATTACHMENT 3

Passage Race

Course Designation: Course 16

16 nautical mile course

Start

West Cardinal Green Island (starboard)

North Cardinal Green Island (starboard)

St Helena Red (port)

North Cardinal St Helena Island (port)

Flashing Green Lateral 2.5 seconds North West St Helena Island (port)

Flashing Green Lateral 4 seconds West St Helena Island (port)

South Cardinal St Helena Island (port)

Hope Banks (starboard)

Finish

Not for navigation



ATTACHMENT 4

Passage Race

Course Designation: Course 21

21 nautical mile course

Start

West Cardinal Green Island (starboard)

North Cardinal Green Island (starboard)

St Helena Red (port)

North Cardinal St Helena Island (port)

Flashing Green Lateral 2.5 seconds North West St Helena Island (port)

Flashing Green Lateral 4 seconds West St Helena Island (port)

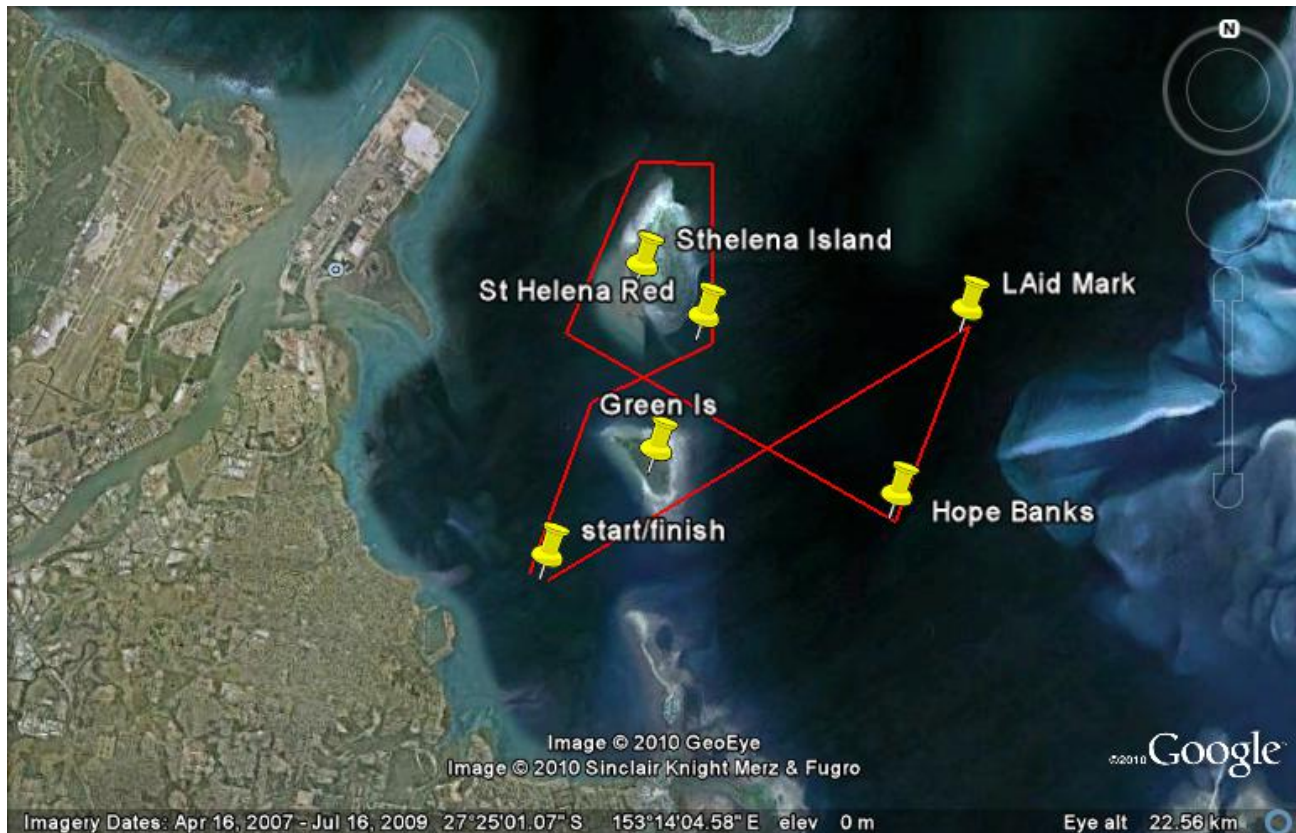
South Cardinal St Helena Island (port)

Hope Banks (port)

Laid Mark (port)

Finish

Not for navigation



ATTACHMENT 5

Passage Race

Course Designation: Course 23

23 nautical mile course

Start

Laid Mark (starboard)

Cleveland Yellow (starboard)

St Helena Red (starboard)

Hope Banks (starboard)

Finish

Not for navigation

