



2011 AUSTRALIAN MULTIHULL CHAMPIONSHIPS

19 – 23 September 2011

SAILING INSTRUCTIONS

Organised By
Multihull Yacht Club Queensland

Hosted By
Royal Queensland Yacht Squadron



1. RULES

The regatta will be governed by the rules as defined in *The Racing Rules of Sailing*.
 The Prescriptions and Special Regulations of Yachting Australia Inc. (YA). Part 1 – Category 5
 The MYCQ Offshore Multihull Rule (OMR)
 Rule 50.2 is amended to: fixed and retractable spinnaker poles may be used to set asymmetrical spinnakers.

2. NOTICES TO COMPETITORS

Notices to competitors will be posted on the official notice board located outside the RQYS Marine Sports Office.

3. CHANGES TO SAILING INSTRUCTIONS

Any change to the Sailing Instructions will be posted before 0900 hours on the day it will take effect, except that any change to the schedule of races will be posted by 1800 hours on the day before it will take effect.

4. SIGNALS MADE ASHORE

- 4.1 Signals made ashore will be displayed on the RQYS Official Flag Pole.
 4.2 When flag AP is displayed ashore '1 minute' is replaced with 'not less than 45 minutes' in the race signal AP.

5. SCHEDULE

Date	Event	Time / Warning Signal
Sunday 18 September	Welcome BBQ	1800
Monday 19 September	Registration	0800 – 0900
	Competitors Meeting	0900
	Race 1	1100
Tuesday 20 September	Race 2	1100
	Race 3	ASAP after Race 2
	Sponsors Social Night – MYCQ Clubhouse	1800
Wednesday 21 September	Lay Day – Resail provision <i>Invitation to attend the RQYS WAGS Race (Wednesday Afternoon Go Sailing – No Charge)</i>	WAGS From 1230 Register in RQ Bar
Thursday 22 September	Race 4	1100
	Race 5	ASAP after Race 4
Friday 23 September	Race 6	1100
	Presentation – RQYS Boardwalk	ASAP after Race 6

- 5.1 After a long postponement, to alert boats that a race or sequence of races will begin soon, an orange flag will be displayed with one sound at least four minutes before a warning signal is displayed.
 5.2 On the last day of the regatta no warning signal will be made after 1500 hours.

6. CLASS FLAGS

The Class Flag will be Code Flag D.

7. RACING AREAS

The racing areas will be east of Green Island.

8. THE COURSES

The courses to be sailed will be as follows:

- 8.1 Race 1 – Passage Race
- 8.2 Race 2 – Windward / Return
- 8.3 Race 3 – Windward / Return
- 8.4 Race 4 – Windward / Return
- 8.5 Race 5 – Windward / Return
- 8.6 Race 6 – Passage Race
- 8.7 Attachments 1, 2, 3 details the courses to be sailed

9. MARKS

9.1 Passage Race:

Mark A – Orange inflatable buoy

Prior to the warning signal the race committee will display a red or green flag to signal which side Mark A is to be rounded. Mark A will be to windward of the starting line.

When a navigation mark is nominated as a mark of a course it shall be left in the manner described in the course booklet, otherwise all navigation marks shall be observed in the correct manner.

9.2 Windward / Return Races:

Mark 1 and Mark 2 – Orange inflatable buoys

Mark 1A and Start/Finish Mark – Orange teardrop buoys

10. THE START

- 10.1 Races will be started by using rule 26 with the warning signal made five (5) minutes before the starting signal.
- 10.2 The starting line will be between a staff displaying an orange flag on the start boat at the starboard end and the port-end starting mark.
- 10.3 A boat starting later than 15 minutes after her starting signal will be scored Did Not Start without a hearing. The changes rule A4.

11. CHANGE OF THE NEXT LEG OF THE COURSE

To change the next leg of the course, the race committee will move the original mark (or the finishing line) to a new position.

12. THE FINISH

The finishing line will be between a staff displaying an orange flag on the finish boat and the finishing mark.

13. PENALTY SYSTEM

For all boats rule 44.1 is changed so that the Two-Turns Penalty is replaced by the One-Turn Penalty.

14. TIME LIMITS

14.1 Time limits and target times are as follows:

Race	Time Limit
Passage Race	6 hours
Windward / Return Races	2 hours

14.2 Windward / Return Race Only: Boats failing to finish within 45 minutes after the first boat sails the course and finishes will be scored Did Not Finish without a hearing. This changes rule 35, A4 and A5.

15. PROTESTS AND REQUESTS FOR REDRESS

15.1 Protest forms are available at the race office located at the RQYS Marine Sports office. Protests and requests for redress or reopening shall be delivered there within the appropriate time limit.

- 15.2 The protest time limit is 30 minutes after the last boat has finished the last race of the day.
- 15.3 Notices will be posted no later than 30 minutes after the protest time limit to inform competitors of hearings in which they are parties or named as witnesses. Hearings will be held in the protest room, located next to the RQYS Marine Sports office in the Olympic Room beginning at the time posted.
- 15.4 Notices or protests by the race committee will be posted to inform boats under rule 61.1(b).
- 15.5 Breaches of instructions 17, 20, 21 and 22 will not be grounds for protest by a boat. This changes rule 60.1(a). Penalties for these breaches may be less than disqualification if the protest committee so decided. The scoring abbreviation for a discretionary penalty imposed under this instruction will be DPI.
- 15.6 On the last scheduled day of racing a request for reopening a hearing shall be delivered
- (a) within the protest time limit if the requesting party was informed of the decision on the previous day;
 - (b) no later than 30 minutes after the requesting party was informed of the decision on that day.
- This changes rule 66.
- 15.7 On the last scheduled day of racing a request for redress based on a protest committee decision shall be delivered no later than 30 minutes after the decision was posted. This changes rule 62.2.

16. SCORING

The Low Point Scoring System of Appendix A will apply.

Three (3) races are required to be completed to constitute a series.

When five (5) races have been completed a boat's score will be the total of her race scores excluding her worst score.

17. SAFETY REGULATIONS

- 17.1 Sign On: All boats are required to contact "RQ RACE CONTROL" on VHF Channel 72 at least 10 minutes prior to the warning signal of the first race of the day to advise their intent to race and the number of people on board.
- 17.2 Sign Off: A boat will be considered to have Signed Off when they cross the finish line.
- 17.3 A boat that retires from a race shall notify "RQ RACE CONTROL" as soon as possible.

18. REPLACEMENT OF CREW OR EQUIPMENT

Substitution of damaged or lost equipment will not be allowed unless authorised by the race committee. Requests for substitution shall be made to the committee at the first reasonable opportunity.

19. EQUIPMENT AND MEASUREMENT CHECKS

A boat or equipment may be inspected at any time for compliance with the class rules and sailing instructions. On the water, a boat can be instructed by a race committee equipment inspector or measurer to proceed immediately to a designated area for inspection.

20. SUPPORT BOATS

Team leaders, coaches and other support personnel shall stay outside areas where boats are racing from the time of the preparatory signal for the first class to start until all boats have finished or retired or the race committee signals a postponement, general recall or abandonment.

21. TRASH DISPOSAL

Boats shall not put trash in the water. Trash may be placed aboard support and race committee boats.

22. RADIO COMMUNICATION

Except in an emergency, a boat shall neither make radio transmissions while racing nor receive radio communications not available to all boats. This restriction also applies to mobile telephones.

23. PRIZES & DIVISIONS

Prizes shall be awarded to the following divisions:

Division 1 – High Performance Multihulls based on OMR handicap of 0.90 and up

Division 2 – Mid Field Racing Multihulls based on OMR handicap of 0.80 up to 0.899

Division 3 – Classic Racing Multihulls based on OMR handicap 0.0 up to 0.799

A minimum of three (3) yachts will constitute a division. The race committee reserves the right to allocate a boat to any division.

Other prizes may be awarded at the discretion of the race committee.

24. DISCLAIMER OF ENTRY

Competitors participate in the regatta entirely at their own risk. See rule 4, Decision to Race. The organising authority will not accept any liability for material damage or personal injury or death sustained in conjunction with or prior to, during, or after the regatta.

25. INSURANCE

Each participating boat shall be insured with valid third-party liability insurance with a minimum cover of \$5m per event or equivalent.

26. RESULTS

During the regatta results will be posted on the RQYS Marine Sports section of the website.

RQYS Website – www.rqys.com.au

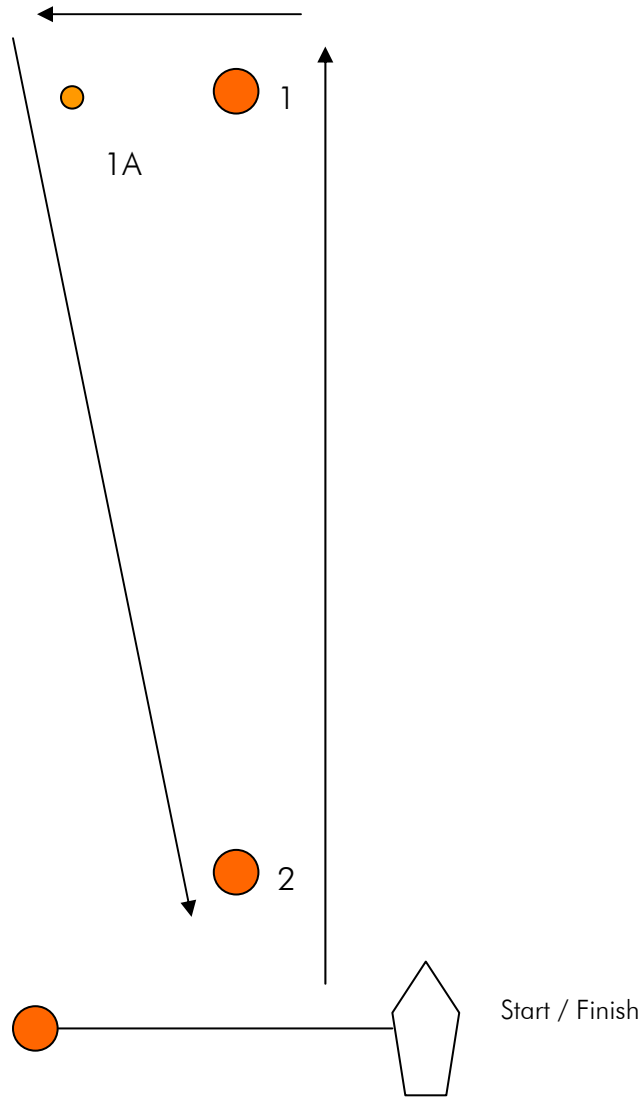
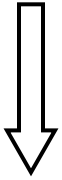
RQYS Marine Sports – <http://sailing.rqys.com.au>

Results – <http://results.rqys.com.au>

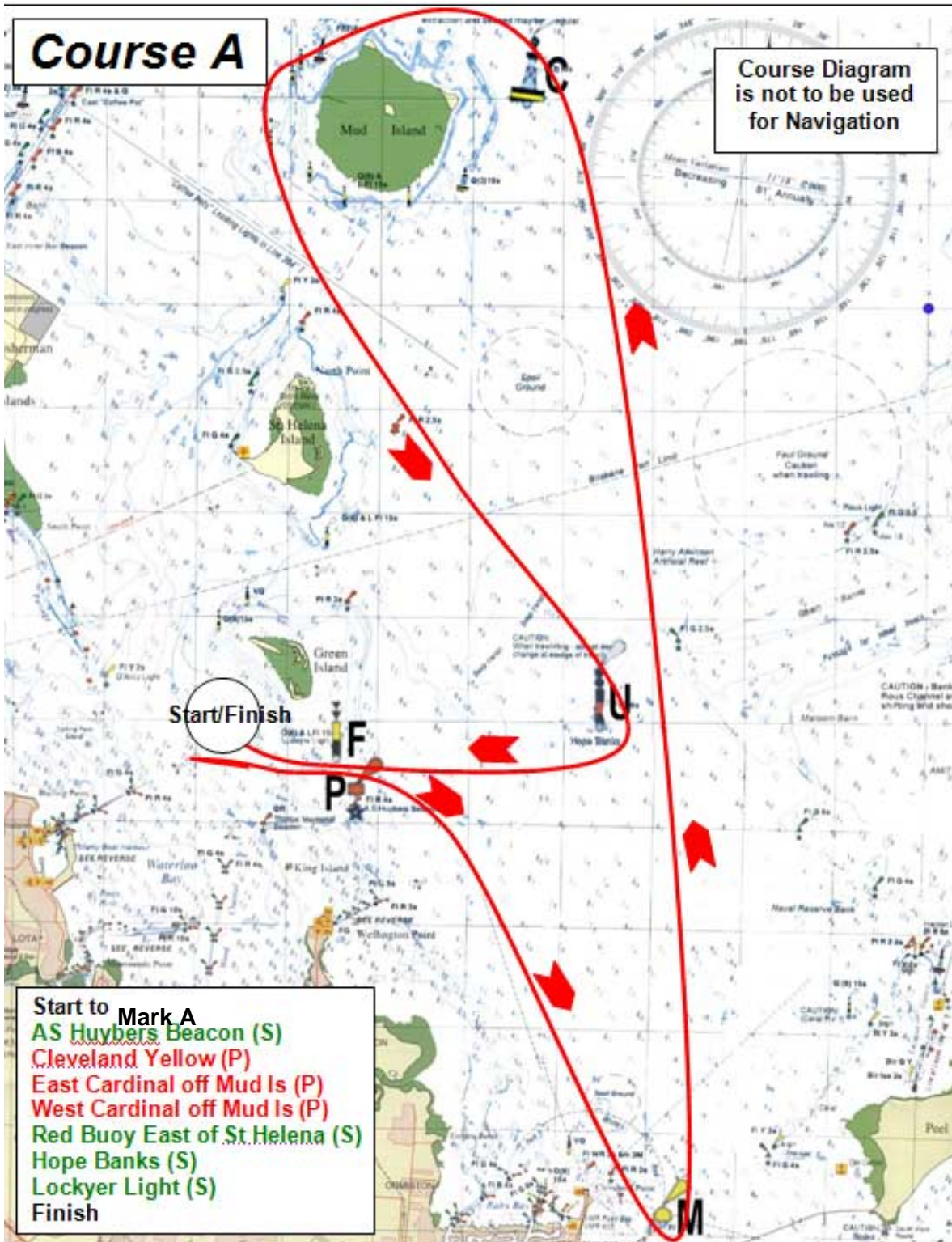
ATTACHMENT 1

Course Code	Description
D2	Start – 1 – 1A – 2 – 1 – 1A – Finish
D3	Start – 1 – 1A – 2 – 1 – 1A – 2 – 1 – 1A – Finish

Wind Direction



ATTACHMENT 2



ATTACHMENT 3

