



2010-2011 Sailing Instructions



Royal Queensland Yacht Squadron

sailing.rqys.com.au

Royal Queensland Yacht Squadron

578 Royal Esplanade (PO Box 5021), Manly, QLD 4179

Telephone: 07 3396 8666
Facsimile: 07 3393 4100
Email: marinesports@rqys.com.au
Web: <http://sailing.rqys.com.au>
Results: <http://results.rqys.com.au>
Enter: <http://enter.rqys.com.au>
Call Sign: VZ4RQ

Race Committee: Marine Sports Manager
Chairman of Sailing Committee
General Manager
Race Officer

Sailing Office: Suellen Hurling (Marine Sports [Sailing] Manager)
Carl Webster (Sailing Academy Coordinator)
Jennie Bridge (Sailing Administrator)
Dugald Henderson (Volunteer Coordinator)

RQYS Race Officers: Sylvia Talbot Alan Carlisle
Odile Anderson Neil Imlay
Julie Moriarty Rob Jackson
Louise Davis Lynette Lane
David Kemp Lionel Hendy
Denis Thompson



www.facebook.com/RQYS.Manly



www.twitter.com/RQYS



2010 / 2011 SAILING SEASON – POLICY

CLUB PARTICIPATION RULES

1. Following participation in any three (3) Royal Queensland Yacht Squadron Ltd. (RQYS) events other than invitation events, any owner, skipper or crew of a participating boat is required to become a member, in the appropriate category, of RQYS.
2. It is the responsibility of the owner/skipper to ensure that all crew competing on the boat holds a current membership of YA or equivalent membership of a yachting authority recognised by ISAF.
3. Class and Division yachts may be rostered for volunteer duty throughout the season. On each of the days specified the nominated boat will provide one volunteer, each class will provide two volunteers. (Mutual swapping of volunteer duties will be acceptable providing the Marine Sports Office is duly informed.)
4. All participants intending to race shall pre-pay and register with a Season Entry or Casual Entry prior to racing. Failure to pay the outlined fee and/or register will result in positions not being recorded. Participants who continue to race without paying or registering may be disciplined by Sailing Committee.
5. Only current financial members of the Royal Queensland Yacht Squadron are eligible for a Season Entry.

RACE ABANDONMENT

1. Races will only be abandoned after careful consideration of all weather conditions and their likely impact on the course area(s).
2. Racing will not be started if there is a current Gale Wind, Tsunami or other severe weather warning.
3. Racing may be started if there is a current Strong Wind Warning depending on the final decision of the Race Committee.
4. For regular Saturday Northern and Southern Course racing the decision to race, postpone or abandon will not be made before 1100 hours on the day of the race unless circumstances indicate that an earlier decision would be appropriate.
5. Any decision to race, postpone or abandon racing will be made by the Race Committee.
6. The Regatta Director will normally be the Marine Sports Manager but this authority may be delegated.
7. A decision to race on any given day does not relieve any competitor of his/her obligation under RRS Fundamental Rule 4.

DIVISIONS

Division Yachts:

A minimum of five (5) season entries are required to constitute a division.

The following division will be sailed for Yachts and Multihulls:

1. IRC
2. PBH Division 1
3. PBH Division 2
4. SMS
5. Multihulls

Northern and Southern Course:

A minimum of five (5) season entries are required to constitute a division.

HOST YOUR NEXT REGATTA AT RQYS

Contact Suellen Hurling to arrange your next regatta at RQYS. With years of major regatta experience, extensive rigging areas and facilities, RQYS is the perfect location for your next regatta.

Phone: 07 3396 8666 | Mobile: 0488 995 591 | Email: marinesports@rqys.com.au

RACE FEES

SEASON ENTRY		
Class	Fee	Includes
Sabot & Optimist	Free Entry	<ul style="list-style-type: none"> Northern and Southern Course Season Points Northern and Southern Course Squadron Championships Spring Series Summer Series Australia Day Regatta
Laser 4.7*, Laser Radial*, Laser Standard*	\$150.00	
Sabre, Pacer*, Contender, 29er*, 420*, BicTechno, RS:X and Sailboards	\$150.00	
Etchells, 505, Skiffs, Hobie 16*, Mixed Cats	\$180.00	
Division Yachts, Sportsboats and Multihulls	\$230.00	<ul style="list-style-type: none"> Squadron Championships Seasons Points Spring Series Summer Series Round the Cans Series Round the Bay Series Goodwill Cup Canaipa Cup Commodore's Cup (Mooloolaba) 2011 Manly Combined Clubs
CASUAL ENTRY **		
** All Northern and Southern course classes including Division Yachts, Sportsboats and Multihulls		\$15.00 per week
<p><i>Casual Entries are not eligible for overall points in Squadron Championship, Season Points or Fastest Times. Casual Entries are eligible for the Spring Series and Summer Series. Refer Sailing Instructions 23.3 and 23.4. The latest a Casual Entry can be converted to a Season Entry and still receive their points is Saturday 11 December 2010. Any conversion after this time will forfeit all results prior to Saturday 11 December 2010. This includes new members.</i></p>		

Can't find your class? Contact the RQYS Marine Sports Department to find out which category you qualify for.
Phone: 3396 8666 | Email: sailingadmin@rqys.com.au

*** SKIPPERS ONLY:** All full time students who are financial Junior or Young Adult Squadron Members with a **valid and current** student card are eligible for a \$10.00 discount on the entry fee. Please present your student card to the Marine Sports Department staff to receive your cash refund. Sabots and Optimists are not eligible to receive the Student \$10.00 cash refund.

SAILING INSTRUCTIONS

Sailing Instructions for the 2010/2011 Sailing Season follow, however separate Sailing Instructions will be issued for certain regattas/events and details will be advised through normal RQYS communications to members and competitors.



1. RULES

- 1.1 The series will be governed by the rules as defined in the current edition of *The Racing Rules of Sailing*.
- 1.2 The Prescriptions and Special Regulations of Yachting Australia Inc. (YA)
- 1.3 Off-the-Beach classes shall comply with YA Special Regulations Part 2.
- 1.4 Division boats competing during daylight hours shall comply with YA Special Regulations Part 1, Category 5 – A completed form must be received prior to the first race.
- 1.5 Where lifelines complying with YA SR Part 1 Section 3 Rule 3.12 have not been fitted, all crew while racing shall wear a visible personal floatation device as per YA SR Part 1 Section 5.
- 1.6 Division boats competing in night races shall comply with YA Special Regulations Part 1, Category 5N – A completed form must be received prior to the first race. *Crews on boats without lifelines racing at night shall wear harnesses with tethers securely attached to the boat.*
- 1.7 Etchells shall comply with YA Special Regulations Part 1, Category 7.
- 1.8 Class rules shall apply.

2. NOTICES TO COMPETITORS

Notices to competitors including results will be posted on the official notice board located outside the RQYS Marine Sports Office and on the 2010/2011 Summer Sailing Season page of the RQYS website.

3. CHANGES TO SAILING INSTRUCTIONS

Any change to the Sailing Instructions will be posted before 1100 on the day it will take effect, except that any change to the schedule of races will be posted by 1700 on the day before it will take effect.

4. SIGNALS MADE ASHORE

- 4.1 Signals made ashore will be displayed on the RQYS Official Flag Pole located outside the RQYS Clubhouse.
- 4.2 When flag AP is displayed ashore '1 minute' is replaced with 'not less than 45 minutes' in the race signal AP.
- 4.3 When a visual signal is displayed over a course flag or class flag, it applies to that course area or class only.

5. SCHEDULE OF RACES AND WARNING SIGNAL TIMES

- 5.1 The schedule of races will be as detailed on the RQYS Sailing Online Calendar (<http://www.rqys.com.au/index.php/rqys-marine-sports-calendar/>)
- 5.2 The warning signals for racing covered by these instructions:

Fleet	Event	First Warning Signal
Division Yachts	Round the Bay Series	1100
Division Yachts	Round the Cans Series	1300
Northern Course	Squadron Racing	1330
Southern Course	Squadron Racing	1330

- 5.3 An orange flag shall be used to mark one end of the starting line (signal boat). This flag will be raised with one long sound signal at least four minutes before the warning signal is displayed to alert competitors and coaches that a race or a racing sequence will start soon. The flag shall be used as follows:
 - (a) Before the first scheduled warning signal of the day (even if the starting procedure will begin on time) and,
 - (b) When there has been a long postponement (more than 10 minutes) and
 - (c) When more than one race will be held on the same day, the warning signal for the first race and each succeeding race will be made as soon as practicable.

sailing.rqys.com.au

6. CLASS FLAGS

Class Flags will be:

FLEET	FLAG
Northern Course	Purple
Contender	Code Flag C
Etchells	White with blue insignia
Hobie 16	Mid blue with black insignia
Mixed Catamarans	Numeral Pennant 5
Northern All Boats	Yellow flag
Southern Course	Pink
Optimist	White with black insignia
Sabot	Orange with blue insignia
Laser	White with red insignia
Laser Radial	Green with red insignia
Laser 4.7	Yellow with red insignia
420	Pale blue with black insignia
Southern All Boats	Yellow flag
BicTechno, RS:X and Sailboards	Purple flag
Division Yachts	Yellow
Combined Divisions	Code Flag D
Multihulls	Numeral Pennant 1

Please Note: If the class sailed is not listed above the division to be sailed in is either Northern All Boats or Southern All Boats – please check with the RQYS Marine Sports Office prior to racing.

7. RACING AREAS

Attachment 1 shows the approximate location of the Northern and Southern course racing areas.

8. THE COURSES

- 8.1 Northern Course: The diagram in Attachment 2 shows the courses, including the order in which marks are to be passed and the side on which marks are to be left.
- 8.2 Southern Course: The diagram in Attachment 3 shows the courses, including the order in which marks are to be passed and the side on which marks are to be left.
- 8.3 Division Yachts: The courses are as described in the 2010/2011 Course Booklet which is available from the RQYS Marine Sports Office or from the Sailing page on the RQYS website.
- 8.4 The race committee boat will display the approximate compass bearing of the first leg. (Mark 1 and 1A for Northern and Southern courses and Mark X for Division 1 and 2, SMS boats and Multihulls.)
- 8.5 The race committee boat shall display the designation of the course to be sailed for each class or division on a board at the back of the start boat.

9. MARKS

- 9.1 Northern Course (Attachment 2):
 - 9.1.1 Marks 1A, 3 and 4 will be orange inflatable buoys.
 - 9.1.2 Marks 1, 2, 1B and Gate Marks will be orange/pink teardrop buoys.
 - 9.1.3 The Start/Finish marks will be orange/pink teardrop buoys.
- 9.2 Southern Course (Attachment 3):
 - 9.2.1 Marks 1, 2 and 5 will be yellow inflatable buoys.
 - 9.2.2 Marks 1A, 2A, 3S/3P and 4S/4P will be orange/pink teardrop buoys.
 - 9.2.3 The Start/Finish marks will be orange/pink teardrop buoys.

- 9.3 Division Yachts – Round the Cans Series Course:
9.3.1 Mark 1 and Gate Marks will be orange inflatable buoys.
9.3.2 The offset mark and Start/Finish marks will be orange/pink teardrop buoys.
- 9.4 Division Yachts – Round the Bay Series Courses:
9.4.1 Fixed marks are described in the 2010/2011 Course Booklet.
9.4.2 Mark X will be a pink inflatable cone.
9.4.3 Laid marks will be tall orange inflatable buoys.
9.4.4 The Start/Finish marks will be orange/pink teardrop buoys.
- 9.5 Division Yachts:
9.5.1 Navigation Marks – When a navigation mark is nominated as a mark of a course it shall be left in the manner described in the course booklet, otherwise all navigation marks shall be observed in the correct manner.
9.5.2 Mark X – For courses that include Mark X, the race committee vessel will display a green flag (starboard) or a red flag (port) to signal the side on which boats shall leave Mark X on the first leg of a race.

10. THE START

- 10.1 The starting line will be between a staff displaying an orange flag on the start boat at the starboard end and the port-end starting mark.
- 10.2 Boats whose warning signal has not been made shall avoid the starting area during the starting sequence for other races.
- 10.3 Northern and Southern Courses: A boat starting later than four (4) minutes after her starting signal will be scored Did Not Start without a hearing. This changes rule A4.
- 10.4 Division Yachts: A boat starting later than fifteen (15) minutes after her starting signal will be scored Did Not Start without a hearing. This changes rule A4.
- 10.5 Division Yachts: If any part of a boat's hull, crew or equipment is on the course side of the starting line during the two minutes before her starting signal and she is identified, the race committee will attempt to broadcast her sail number on VHF Channel 72. Failure to make a broadcast or to time it accurately will not be grounds for redress. This changes rule 62.1(a).

11. CHANGE OF THE NEXT LEG OF THE COURSE

- 11.1 To change the next leg of the course, the race committee will move the original mark (or the finishing line) to a new position.
- 11.2 Except at a gate, boats shall pass between the race committee boat signaling the change of the next leg and the nearby mark. This changes rule 28.1.

12. THE FINISH

- 12.1 The finishing line will be between a staff displaying an orange flag on the finish boat and the finishing mark.
- 12.2 Southern Course: When the finishing line is in a separate location (refer Attachment 3) to the starting line the finish boat will display Code Flag F.
- 12.3 Division Yachts: The finish line will be within the vicinity of the starting area and laid at approximately 90° to the bearing from the last mark of the course.
- 12.4 Division Yachts: When there is no race committee vessel on station at the finish the alternate finish line will be reached when the red outer channel mark of the Manly Harbour entrance leads bears true north and lies within 50m. In this case, yachts are required to complete a declaration form which will be available to download from the RQYS Website or from the RQYS Marine Sports Office. Finish declarations shall be lodged with the RQYS Marine Sports Office or RQYS Reception within 24 hours following the completion of the race and shall include the name of the yacht, skipper and the GPS derived finish time corrected to Eastern Standard Time.

13. PENALTY SYSTEM

Division Multihulls, Hobie 16 and Mixed Cats (only): Rule 44.1 is changed so that the Two-Turns Penalty is replaced by the One-Turn Penalty.

14. TIME LIMITS

14.1 Time limits are as follows:

Class	Time Limit
Northern and Southern Courses	90 minutes
Division Yachts – Round the Cans Series	120 minutes
Division Yachts – Round the Bay Series	1700 hours (5pm)

14.2 Northern and Southern Courses: Boats failing to finish within 15 minutes after the first boat in their division/class sails the course and finishes will be scored Did Not Finish without a hearing. This changes rule 35, A4 and A5.

15. PROTESTS AND REQUESTS FOR REDRESS

15.1 Protest forms are available from the RQYS Marine Sports office. Protests and requests for redress or reopening shall be delivered there within the appropriate time limit.

15.2 The protest time limit is 90 minutes after the last boat has finished the last race of the day.

15.3 Notices will be posted no later than 30 minutes after the protest time limit to inform competitors of hearings in which they are parties or named as witnesses. Hearings will be held in the Olympic Room located next to the RQYS Marine Sports Office beginning at the time posted.

15.4 Notices or protests by the race committee will be posted to inform boats under rule 61.1(b).

15.5 Breaches of instructions 10.2, 17, 20, 21 and 22 will not be grounds for protest by a boat. This changes rule 60.1(a). Penalties for these breaches may be less than disqualification if the protest committee so decided. The scoring abbreviation for a discretionary penalty imposed under this instruction will be DPI.

15.6 On the last scheduled day of racing a request for reopening a hearing shall be delivered;
(a) within the protest time limit if the requesting party was informed of the decision on the previous day;
(b) no later than 30 minutes after the requesting party was informed of the decision on that day.
This changes rule 66.

15.7 On the last scheduled day of racing a request for redress based on a protest committee decision shall be delivered no later than 30 minutes after the decision was posted. This changes rule 62.2.

15.8 When Division Yachts are scheduled to finish away from Waterloo Bay, a boat intending to protest shall notify the race committee vessel as soon as possible after finishing and comply with the requirements of rule 61.1. The completed protest form must then be lodged at the Marine Sports Office within 24 hours of the protestor's return to Manly. This changes rule 61.3.

16. SCORING

16.1 The Low Point Scoring System as set out in the *Racing Rules of Sailing* shall apply. The number of entrants for any particular race will be the number of boats entered for any race in the series up to and including the race in question. This amends A4.2.

16.2 The number of scheduled races will be as detailed on the RQYS Marine Sports Online Calendar.

16.3 Northern and Southern Courses: The maximum number of discards allowed shall be as follows:

16.3.1 Squadron Championship – 2 races.

16.3.2 Season Points – 6 races.

16.3.3 Fastest Times – 6 Races.

16.4 Northern and South Courses: In the event that the scheduled number of races can not be completed, the number of discards will be reduced proportionally.

16.5 Division Yachts: Discards shall be as follows:

16.5.1 4 races completed per series – no discards.

16.5.2 5 races completed per series – 1 discard.

16.5.3 6-10 races completed per series – 2 discards plus 1 discard for every additional 5 races completed.

17. SAFETY REGULATIONS

17.1 In the event of severe weather, boats that can not return to Manly Boat Harbour under their own power should identify the nearest race committee or patrol vessel and make towards that vessel.

Northern and Southern Courses

17.2 All skippers shall SIGN ON before racing each day and SIGN OFF at the earliest possible time after the completion of racing (but not later than the end of protest time). Forms will be available outside the RQYS Marine Sports Office from 0900 on the day of racing.

- 17.3 The skipper of a boat that retires or does not intend to continue racing is required to SIGN OFF immediately on return to shore. Failure to comply may result in protest by the race committee.
Please Note: Failure to SIGN OFF may result in a full safety alert with all race committee vessels and patrol boats remaining on course until the vessel is found.

- 17.4 A boat that retires from a race shall notify the race committee as soon as possible.

Division Yachts

- 17.5 Division Yachts shall SIGN ON at least 10 minutes before the warning signal by contacting the race committee vessel on VHF Channel 72 advising the name of the boat, number of persons on board (POB) and receive acknowledgement.
- 17.6 When a Division Yacht has finished it shall be deemed to have SIGNED OFF.
- 17.7 A boat that retires from a race shall notify the race committee on VHF Channel 72 as soon as possible.
- 17.8 Unless in use no part of the anchor may project forward of the bow at any time whilst racing.

18. REPLACEMENT OF CREW OR EQUIPMENT

- 18.1 Skippers may change boats, sails and equipment throughout the season and retain points if they remain in the same *class*.
- 18.2 If a skipper changes *classes* then points are forfeited. Laser 4.7, Radial and Standard are classified as different classes.
- 18.3 Etchells: Points will stay with the *boat* as requested and approved by the Etchells Class Association.
- 18.4 16' Skiff: Points will stay with the *boat* as requested and approved by the 16' Skiff Class Association.
- 18.5 Boats intending to race with a sail number other than that stipulated on their entry shall advise the RQYS Marine Sports Office in writing prior to racing. Failure to comply will result in the boat being scored DNS for all races on that day.

19. EQUIPMENT AND MEASUREMENT CHECKS

A boat or equipment may be inspected at any time for compliance with the class rules and sailing instructions. On the water, a boat can be instructed by a race committee equipment inspector or measurer to proceed immediately to a designated area for inspection.

20. SUPPORT BOATS

- 20.1 Team leaders, coaches and other support personnel shall stay outside areas where boats are racing from the time of the preparatory signal for the first class to start until all boats have finished or retired or the race committee signals a postponement, general recall or abandonment.
- 20.2 For training purposes an approved RQYS Coach may be placed on a patrol boat to coach a fleet approved by the RQYS Marine Sports Office.

21. TRASH DISPOSAL

Boats shall not put trash in the water. Trash may be placed aboard support and race committee boats.

22. RADIO COMMUNICATION

Except in an emergency, a boat shall neither make radio transmissions while racing, unless for the purpose for providing requested position reports, nor receive radio communications not available to all boats. This restriction also applies to mobile telephones.

23. PRIZES AND PRESENTATIONS

- 23.1 There will be no daily presentations in the 2010/2011 Summer Sailing Season.
- 23.2 Spring Series Presentation: Saturday 11 December 2010
- 23.2.1 Points will be calculated for races from Saturday 11 September 2010 to Saturday 11 December 2010.
- 23.3 Summer Series Presentation: Saturday 2 April 2011
- 23.3.1 Points will be calculated for races from Saturday 5 January 2011 to Saturday 2 April 2011.
- 23.4 Spring & Summer Series Presentations: 1st, 2nd and 3rd on Handicap across all classes/division for both the Northern and Southern Courses and Division Yachts (Division Yachts – Round the Cans and Round the Bay Series will be calculated as one series for these presentations).
- 23.5 Spring & Summer Series Presentations: Season Entries and RQYS member with a Casual Entry are eligible for prizes in the Spring and Summer Series. (Non-members are not eligible for prizes).

- 23.6 2010/2011 Season Presentation of Trophies for Squadron Championship and other events will take place in the RQYS Flags Function Room.
Junior Presentation: Friday 13 May 2011
Senior Presentation: Friday 17 June 2011
- 23.7 Only SEASON ENTRIES are eligible for prizes at Junior and/or Senior Presentation of Trophies.
- 23.8 Other prizes may be awarded at the discretion of the organising authority.

24. DISCLAIMER OF LIABILITY

Competitors participate in the regatta entirely at their own risk. See rule 4, Decision to Race. The organising authority will not accept any liability for material damage or personal injury or death sustained in conjunction with or prior to, during, or after the regatta.

25. INSURANCE

Each participating boat shall be insured with valid third-party liability insurance with a minimum cover of \$5m (recommended \$10m) per event or equivalent.

26. HANDICAPS

Handicaps will be allocated by the RQYS Handicap Sub-Committee. Changes to a boat's sailing configuration, equipment or crew shall be advised to the RQYS Marine Sports Office prior to the next race in which it intends to compete.

27. IRC CERTIFICATES

Yachts racing in the IRC Division will not receive IRC results unless a valid certificate is on file with the RQYS Marine Sports Office. Back dated results will not be processed if an IRC Certificate is received after 10 September 2010. If a new IRC Certificate is issued to a boat, a copy must be submitted to the RQYS Marine Sports Office ASAP. Ratings will be adjusted accordingly if applicable.

28. SMS RATINGS

Sportsboats will only be eligible for the SMS Division if they hold a current SMS Rating as per the Australian Sportsboat Association website as at 10 September 2010. SMS Ratings will be amended if required when the new ratings are available. Back dated results will not be processed if a new SMS Rating is received after 10 September 2010. Any changes to ratings must be advised to the RQYS Marine Sports Office ASAP.

29. RESULTS

During the season daily results will be posted on the official notice board for one week and season results will be posted on the dedicated results website: <http://results.rqys.com.au>

These Sailing Instructions cover the following RQYS Events:

- Northern and Southern Course Season Points
- Division Yachts Season Points
- Squadron Championships
- Round the Cans Series
- Round the Bay Series
- Australia Day Regatta
- Goodwill Cup
- Myora Cup

These instructions may be used for any other event at the discretion of the Marine Sports Department in conjunction with Sailing Committee.

MAJOR SQUADRON SAILING AWARDS

Junior Presentation of Trophies – Up to 18 Years

- Most Improved Junior Skipper (T E Passey Trophy)
- Best Result for a National Regatta (Vidgen Perpetual Cup)
- Most Consistent Skipper (Harold Dean Memorial Cup)
- Junior Instructor of the Year
- Junior Yachtsman of the Year (W A O'Hare Memorial Trophy)

Senior Presentation of Trophies

- Most Consistent Skipper in a Senior Class (Callisto Cup A M Greenfield Trophy)
- Squadron Champion for an Olympic Class (Astra Trophy)
- Longest Serving Member of Seasons Points Winners (The Governor's Trophy)
- Best Performance in an Olympic Class (John H Robinson Memorial Trophy)
- Most Consistent Contributor (Maurice Tilley Perpetual Trophy)
- Offshore Yacht of the Year (James Clark Memorial Trophy)
- Farr 40 of the Year (Pacific Harbour Farr 40 Cup)
- Sports Boat of the Year
- Youth Yachting Crew of the Year (18 – 25 years)
- Yachting Crew Member of the Year (Over 25 years)
- Yachtsman of the Year (Hardy Brothers Jewellers Yachtsman of the Year Perpetual Trophy)



Club Marine

Brisbane to Keppel Tropical Yacht Race

www.brisbanetokeppel.com



ISAF Grade 2 Sail Brisbane

www.sailbrisbane.com



Queensland Youth Week

www.qldyouthweek.com



Sail & Play

www.sailandplay.com

BECOME A VOLUNTEER!

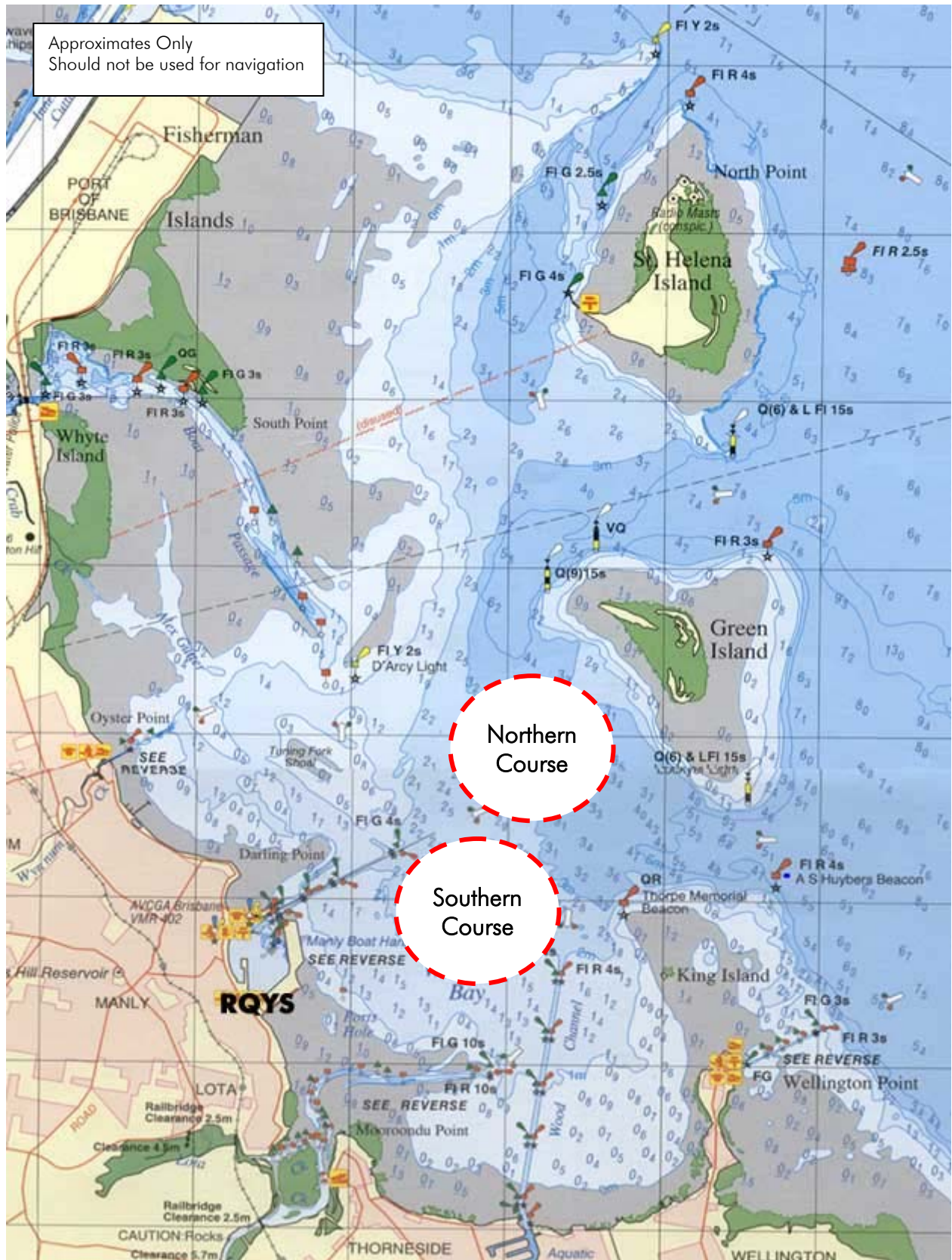
Why not become a part of our internationally renowned Volunteer team?
We have plenty of opportunities available for anyone wanting to get involved with the racing – whether it be on the water, the ramp or in the office.

So don't just sit on shore! Get out there and experience the racing in all its glory.

For more information please contact the RQYS Marine Sports Department or email volunteers@rqys.com.au

ATTACHMENT 1

NORTHERN AND SOUTHERN COURSE RACING AREAS



ATTACHMENT 2

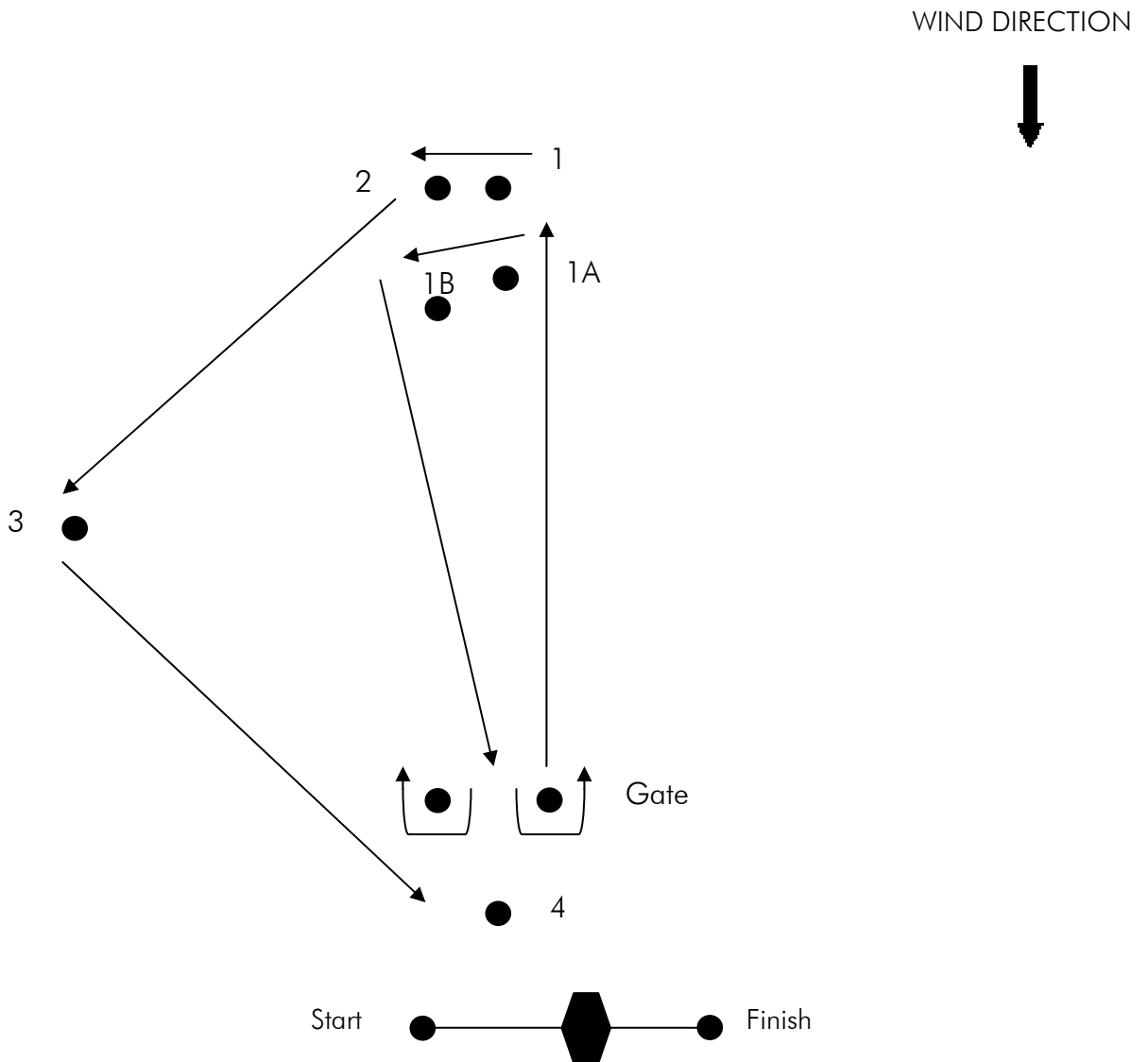
NORTHERN COURSE

All marks shall be rounded to port, and the course sailed in the following order:

Designation	Course
D2A	Start – 1A – 1B – Gate – 1A – 1B – Finish
D3B	Start – 1A – 1B – Gate – 1A – 1B – Gate – 1A – 1B – Finish
D2	Start – 1 – 2 – 4 – 1 – 2 – Finish
D3	Start – 1 – 2 – 4 – 1 – 2 – 4 – 1 – 2 – Finish
T2	Start – 1 – 2 – 3 – 4 – 1 – 2 – Finish
T3	Start – 1 – 2 – 3 – 4 – 1 – 2 – 4 – 1 – 2 – Finish

COURSE NOTES

The minimum distance between Marks 4 and Gates, Marks 1 and 1A and Mark 4 to the Start/Finish lines will be 0.1 nm.

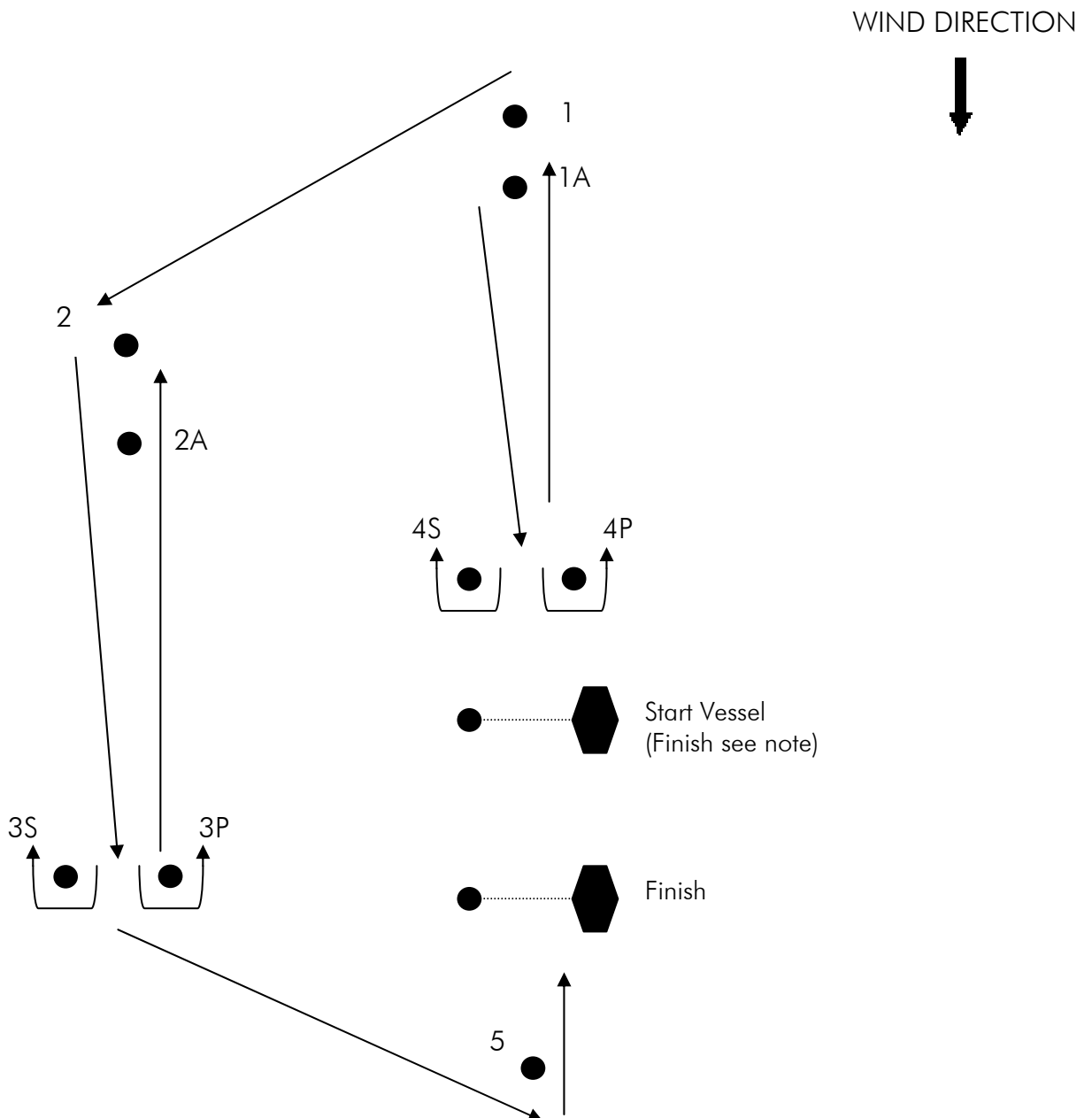


ATTACHMENT 3

SOUTHERN COURSE

All marks (except gate marks) shall be rounded to port, and the course sailed in the following order;

Designation	Course
O1A	Start – 1A – 2A – 3P – 5 – Finish
O2A	Start – 1A – 2A – 3S/3P – 2A – 3P – 5 – Finish
O1	Start – 1 – 2 – 3P – 5 – Finish
O2	Start – 1 – 2 – 3S/3P – 2 – 3P – 5 – Finish
O3	Start – 1 – 2 – 3S/3P – 2 – 3S/3P – 2 – 3P – 5 – Finish
I2	Start – 1 – 4S/4P – 1 – 2 – 3P – 5 – Finish
I3	Start – 1 – 4S/4P – 1 – 4S/4P – 1 – 2 – 3P – 5 – Finish



Note: Separate start/finish line:

When the finishing line is in a separate location to the starting line the finish boat will display Code Flag F. Refer Sailing Instructions 12.2.



RQYS Sailing: What's On?

All Season Entries will automatically receive the RQYS Marine Sports Department weekly "What's On?" email which is sent each Wednesday afternoon. The email will contain information regarding the coming weekend of sailing, special announcements, results & heaps more!

If you are not receiving your weekly email please contact us on 3396 8666 or email marinesports@rqys.com.au

Calendar



View all events on the RQYS Marine Sports Calendar
<http://www.rqys.com.au/index.php/rqys-marine-sports-calendar/>

Enter Online

<http://enter.rqys.com.au>



View Results

<http://results.rqys.com.au>



