



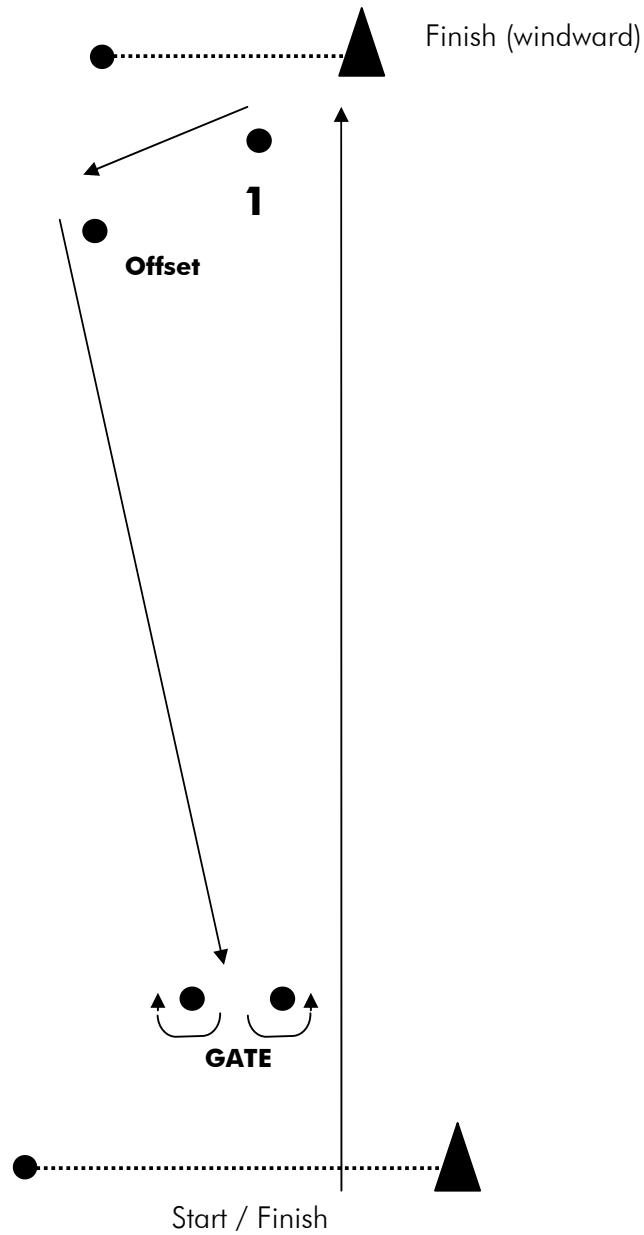
Royal Queensland Yacht Squadron

Division Yacht Courses

2010 / 2011 Sailing Season

RQYS Division Yachts – Windward and Return

| Designation | Course |
|-------------|---------------------------------------------------------------------|
| D1 | Start – 1 – Offset – Gate – 1 – Offset – Finish |
| D2 | Start – 1 – Offset – Gate – 1 – Offset – Gate – 1 – Offset – Finish |
| W1 | Start – 1 – Offset – Gate – Finish |
| W2 | Start – 1 – Offset – Gate – 1 – Offset – Gate – Finish |

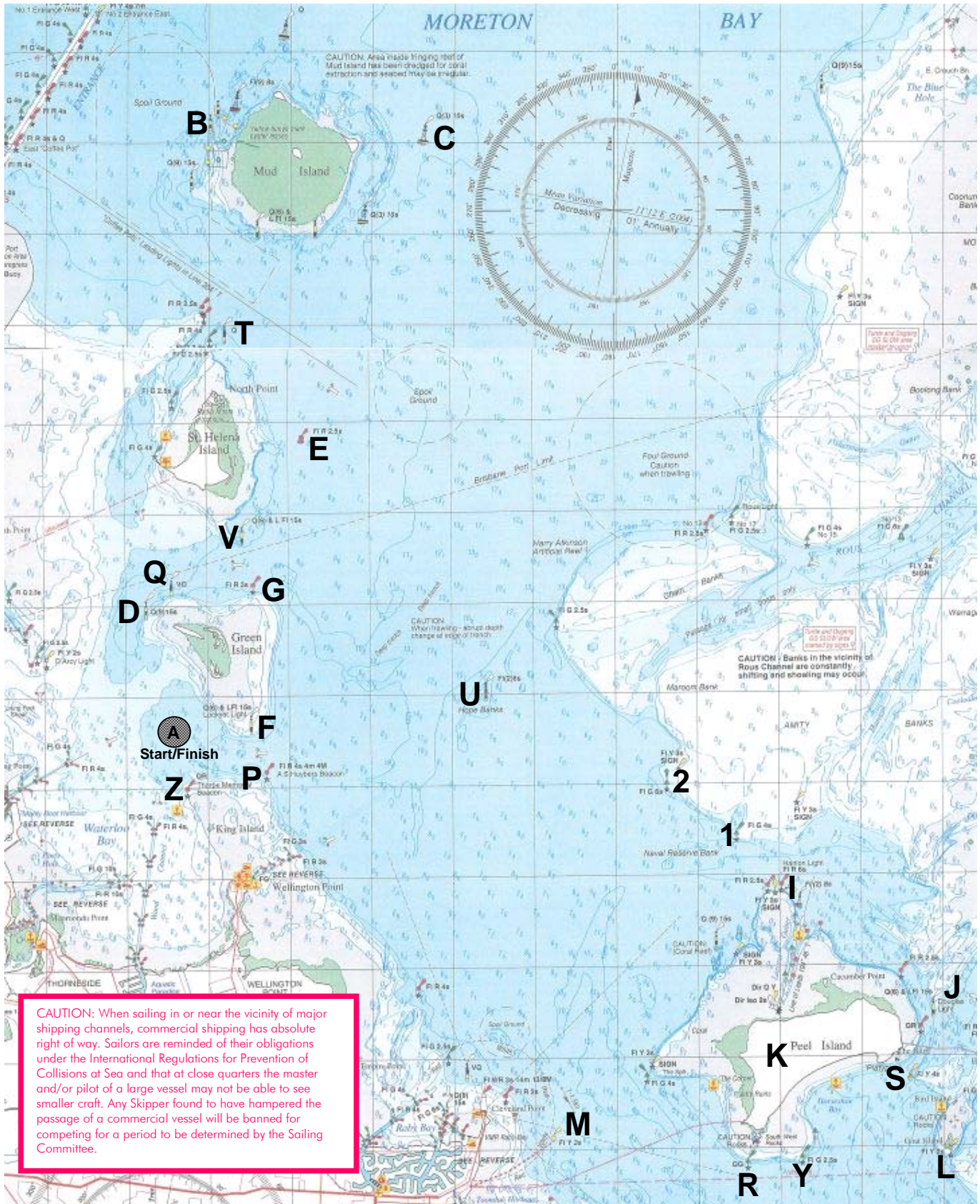


Designated Marks used in RQYS Races

| | Description | Approximate Position | |
|---|-------------------------------------------------------------------------|-----------------------------|-----------|
| A | Start/Finish Line in Waterloo Bay, East of Manly Outer Entrance Beacons | | |
| B | West Cardinal Beacon off Mud Island | 27°19.8S | 153°13.9E |
| C | East Cardinal Beacon off Mud Island | 27°19.9S | 153°16.5E |
| D | West Cardinal Beacon off Green Island | 27°25.2S | 153°13.2E |
| E | Red Buoy East of St Helena Island | 27°23.2S | 153°15.2E |
| F | Lockyer Cardinal Beacon | 27°26.5S | 153°14.4E |
| G | Red Beacon NE of Green Island | 27°24.8S | 153°14.6E |
| H | Eric Early Beacon | 27°37.4S | 153°24.2E |
| I | Hanlon Light | 27°28.2S | 153°21.0E |
| J | Douglas Light | 27°29.5S | 153°22.8E |
| K | Peel Island | | |
| L | Goat Island Beacon Fl Yellow 2s | 27°31.2S | 153°23.1E |
| M | Yellow Buoy SE of Cleveland Point | 27°30.9S | 153°18.1E |
| N | Myora Light | 27°28.4S | 153°24.2E |
| O | Outer Measured Mile | 27°15.0S | 153°15.1E |
| P | Huybers Beacon | 27°26.9S | 153°14.6E |
| Q | North Cardinal Green Island | 27°24.7S | 153°13.6E |
| R | Green Beacon (QG) S-W Rocks | 27°31.3S | 153°20.6E |
| S | Fl Y 4s Eastern End Horseshoe Bay | 27°30.3S | 153°22.4E |
| T | North Cardinal Beacon St Helena Island | 27°22.3S | 153°14.1E |
| U | Hope Banks Beacon | 27°26.15S | 153°17.4E |
| V | South Cardinal Beacon St Helena Island | 27°24.4S | 153°14.4E |
| W | Merv Hazell Beacon | 27°33.6S | 153°24.1E |
| X | Mark 'X' – laid approx .5nm windward of Start Line | | |
| Y | Green Beacon (Fl G 2.5s) W Horseshoe Bay | 27°25.2S | 153°21.3E |
| Z | Thorpe Beacon NW of King Island | 27°27.2S | 153°13.7E |
| 1 | Green Beacon (Fl G 4s) off Naval Reserve Banks | 27°27.6S | 153°20.4E |
| 2 | Green Beacon (Fl G 6s) North West of Mark 1 | 27°27.1S | 153°19.6E |
| 3 | Green Beacon (Fl G 2.5s) North of Potts Point | 27°34.3S | 153°21.8E |
| 4 | Laid Mark | 27°32.4S | 153°22.3E |

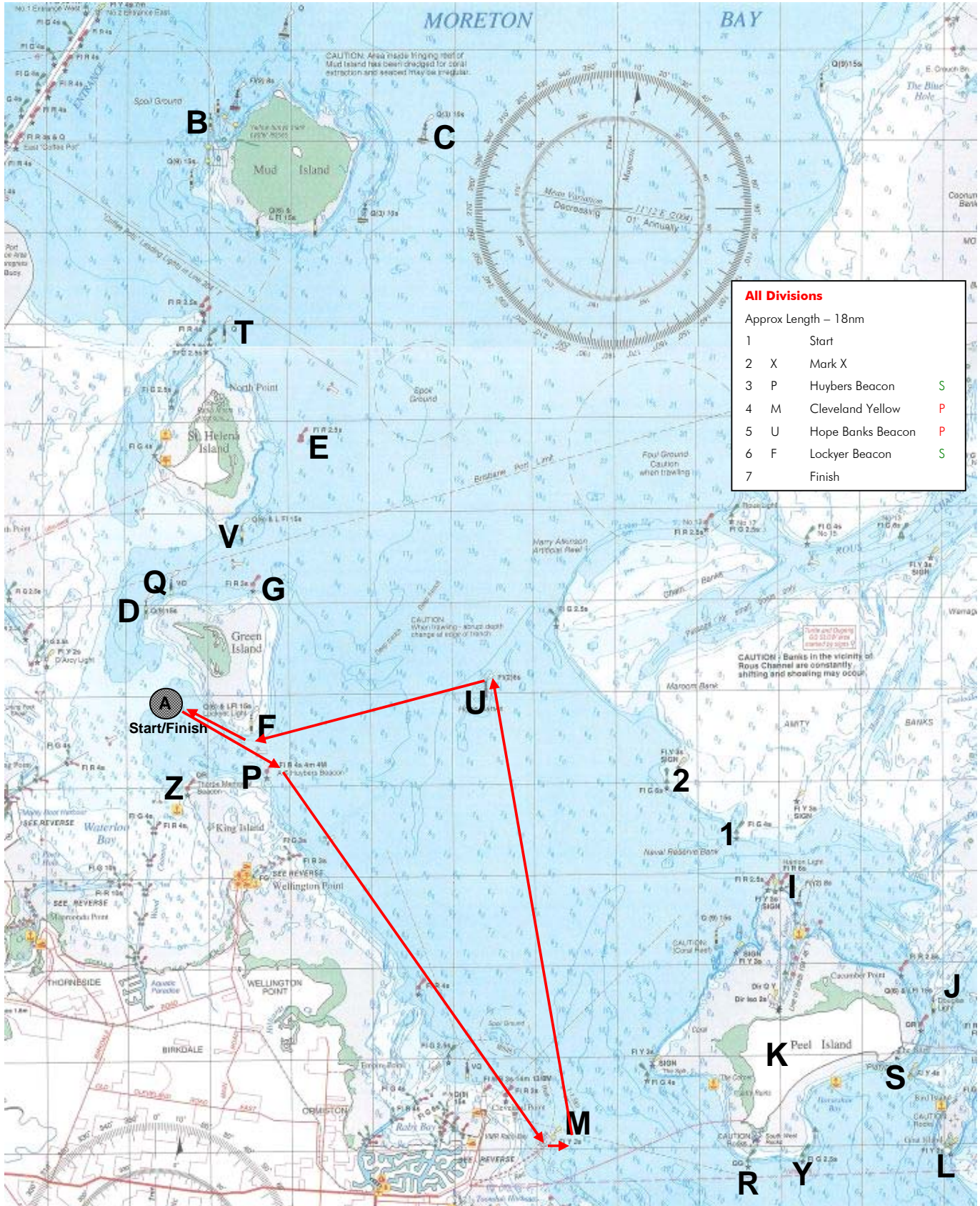
Designated Marks used in RQYS Races

Note: the Race Committee Vessel will signal the said on which Mark X is to be left on the first leg of the race by flying a **green (starboard rounding)** or **red (port rounding)** flag.



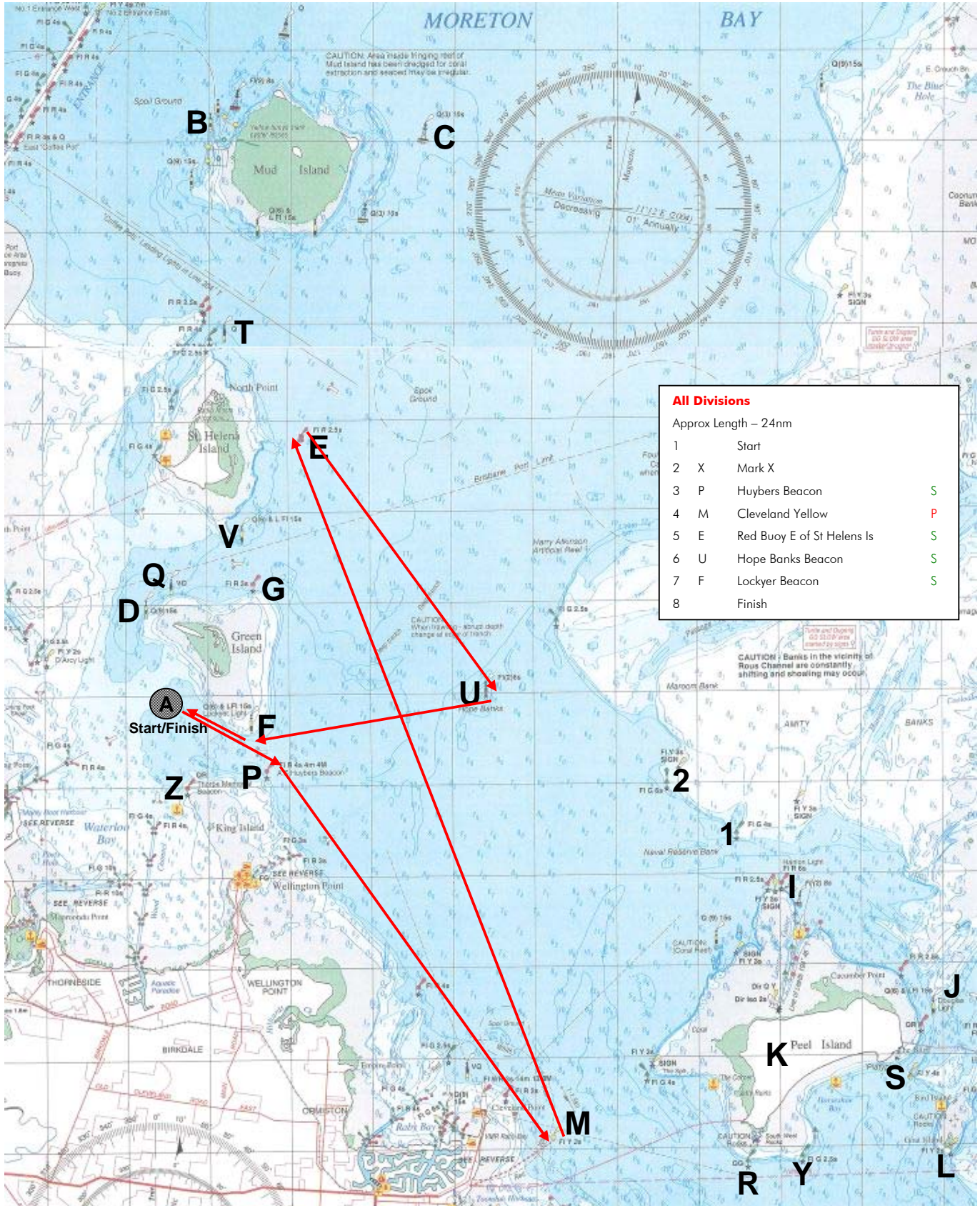
Note: charts illustrated in these sailing instructions show the general racing area – **Not for Navigation**

RQYS Division Yachts – Course A



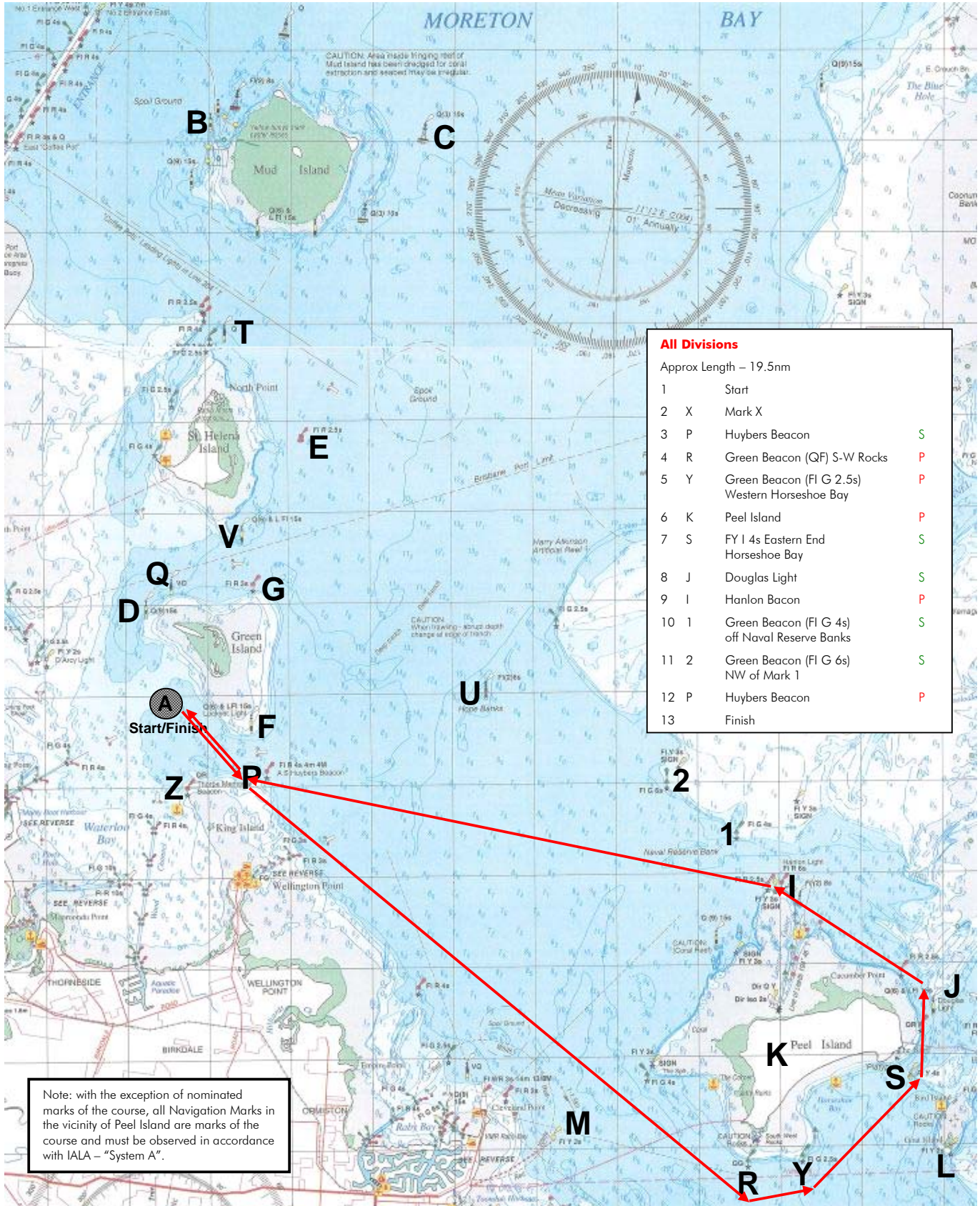
Note: charts illustrated in these sailing instructions show the general racing area – **Not for Navigation**

RQYS Division Yachts – Course B



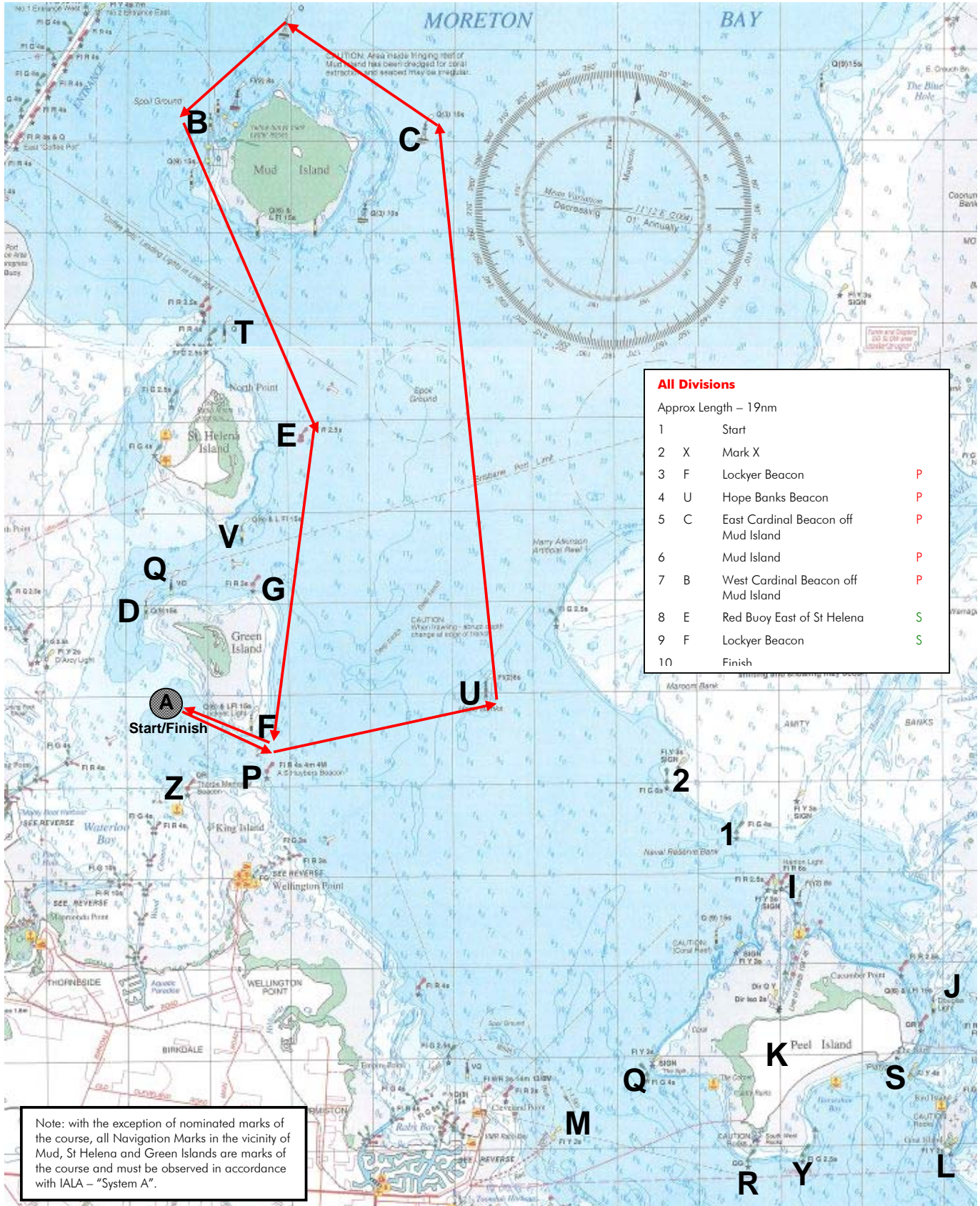
Note: charts illustrated in these sailing instructions show the general racing area – **Not for Navigation**

RQYS Division Yachts – Course C



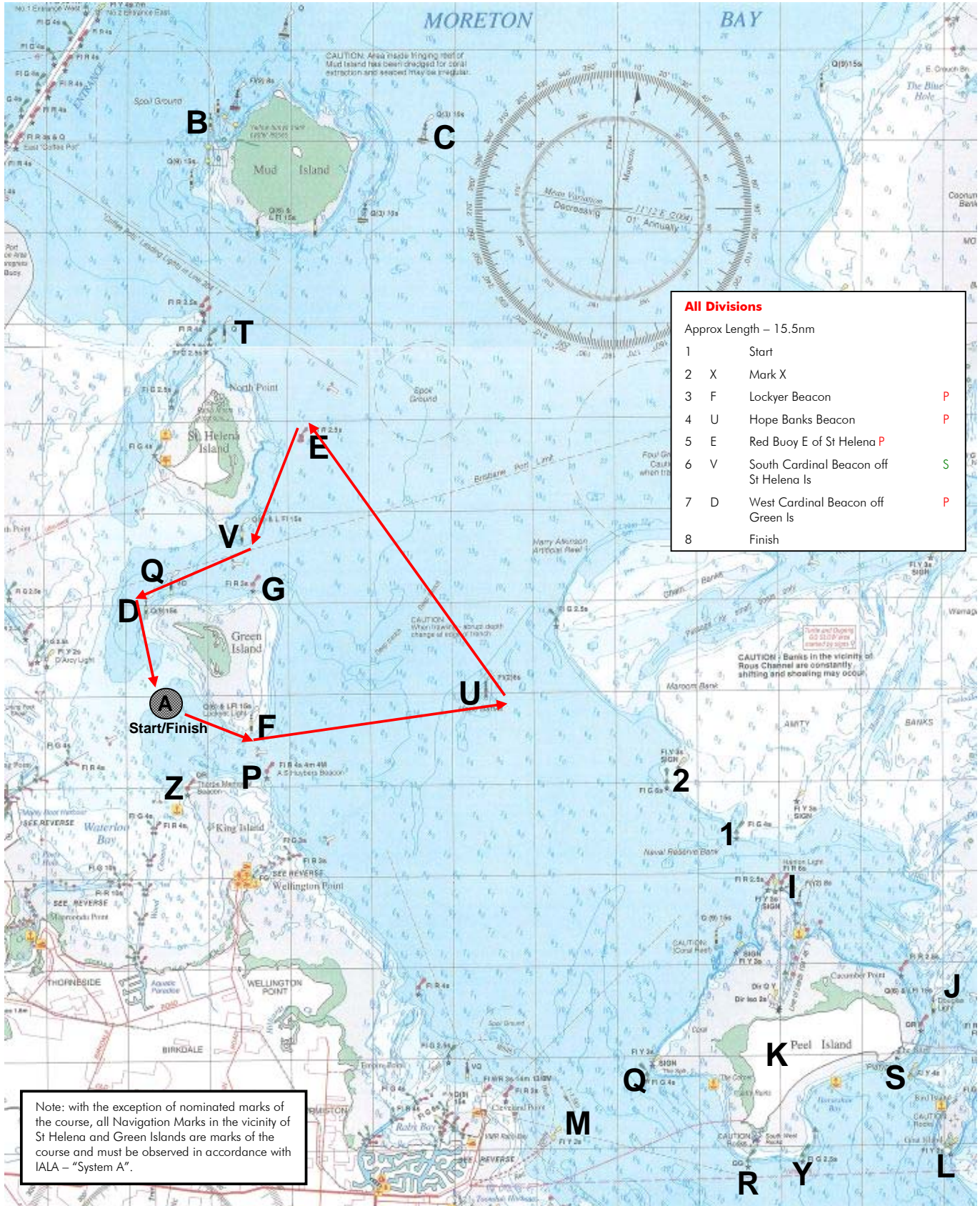
Note: charts illustrated in these sailing instructions show the general racing area – **Not for Navigation**

RQYS Division Yachts – Course D



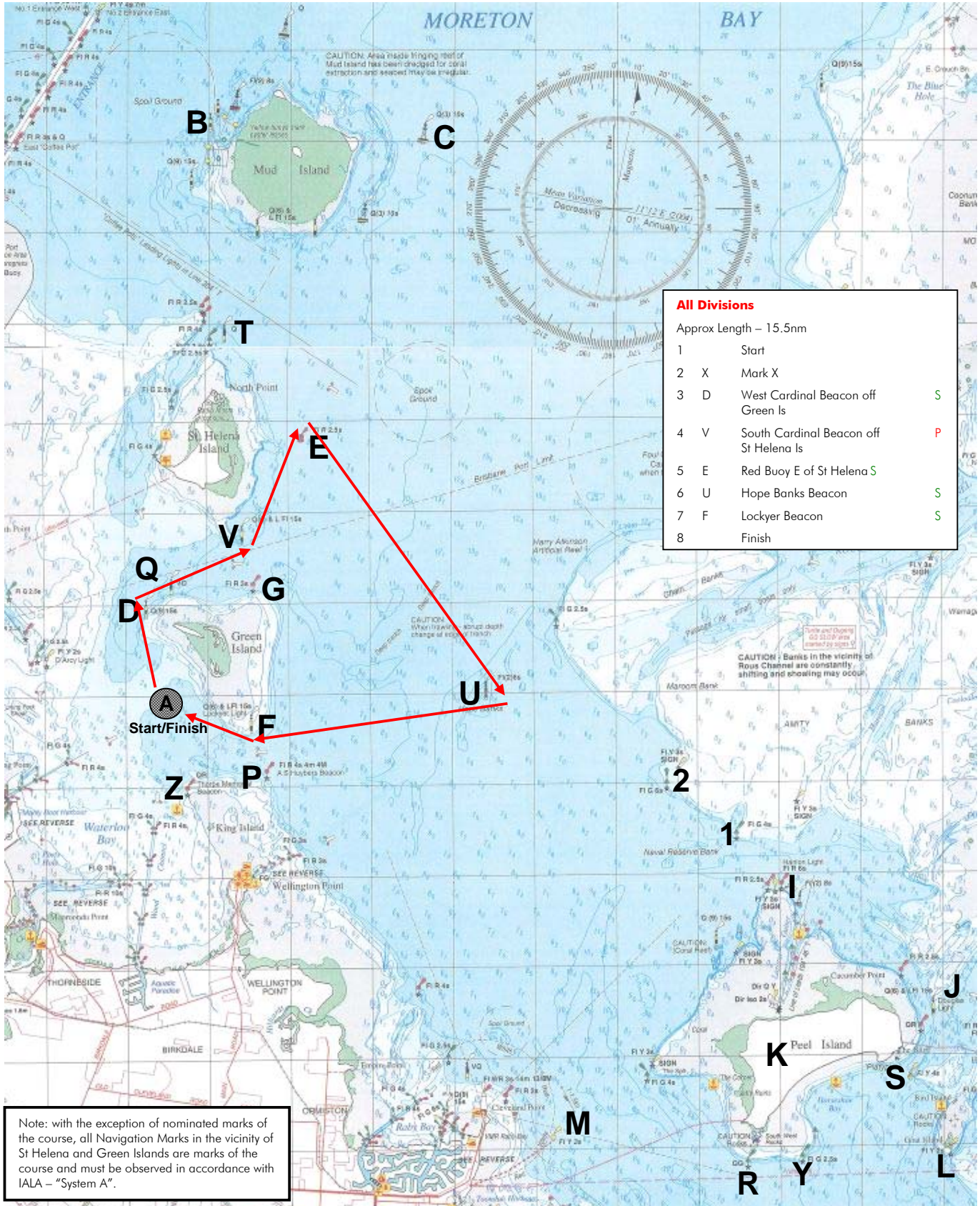
Note: charts illustrated in these sailing instructions show the general racing area – **Not for Navigation**

RQYS Division Yachts – Course E



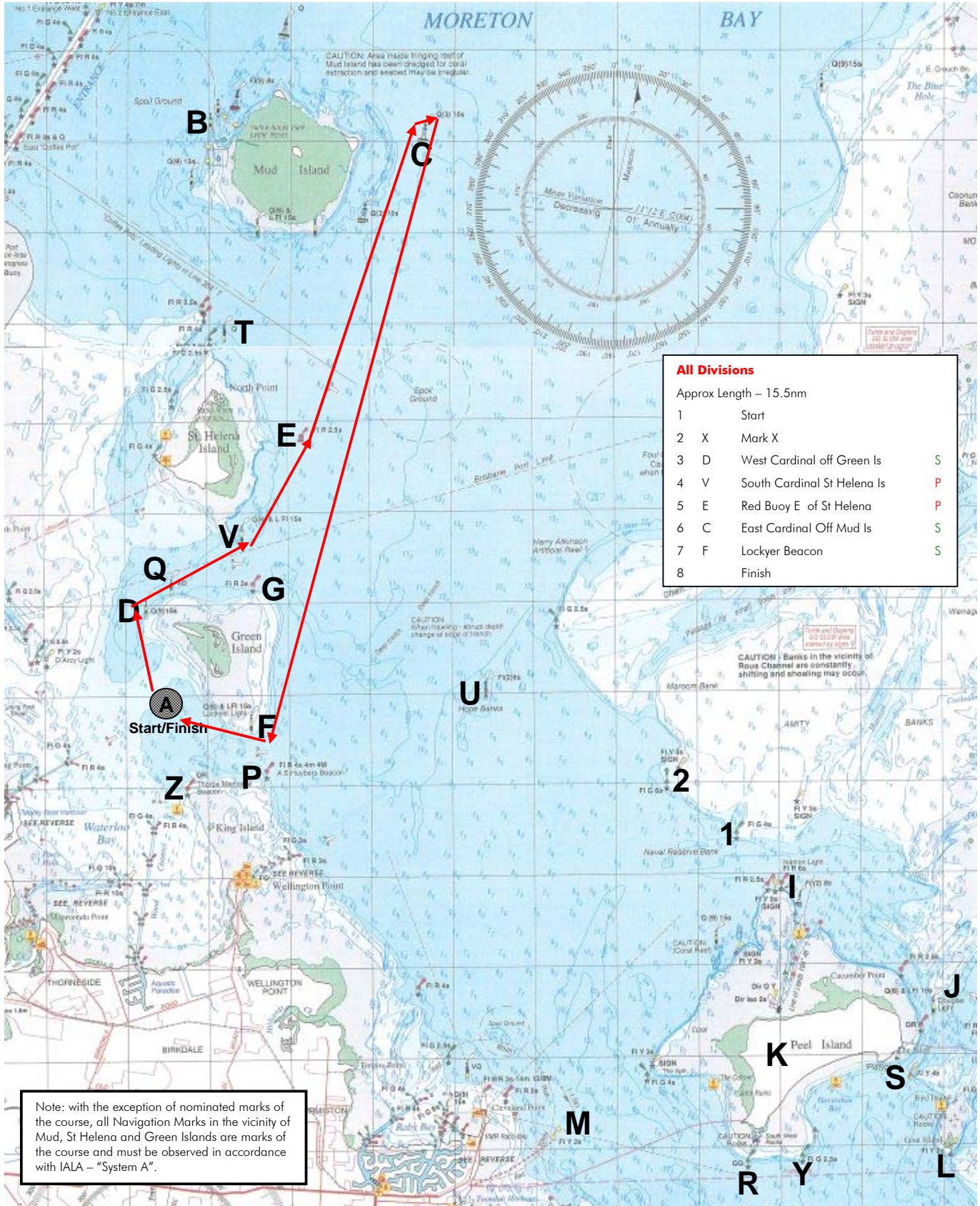
Note: charts illustrated in these sailing instructions show the general racing area – **Not for Navigation**

RQYS Division Yachts – Course F



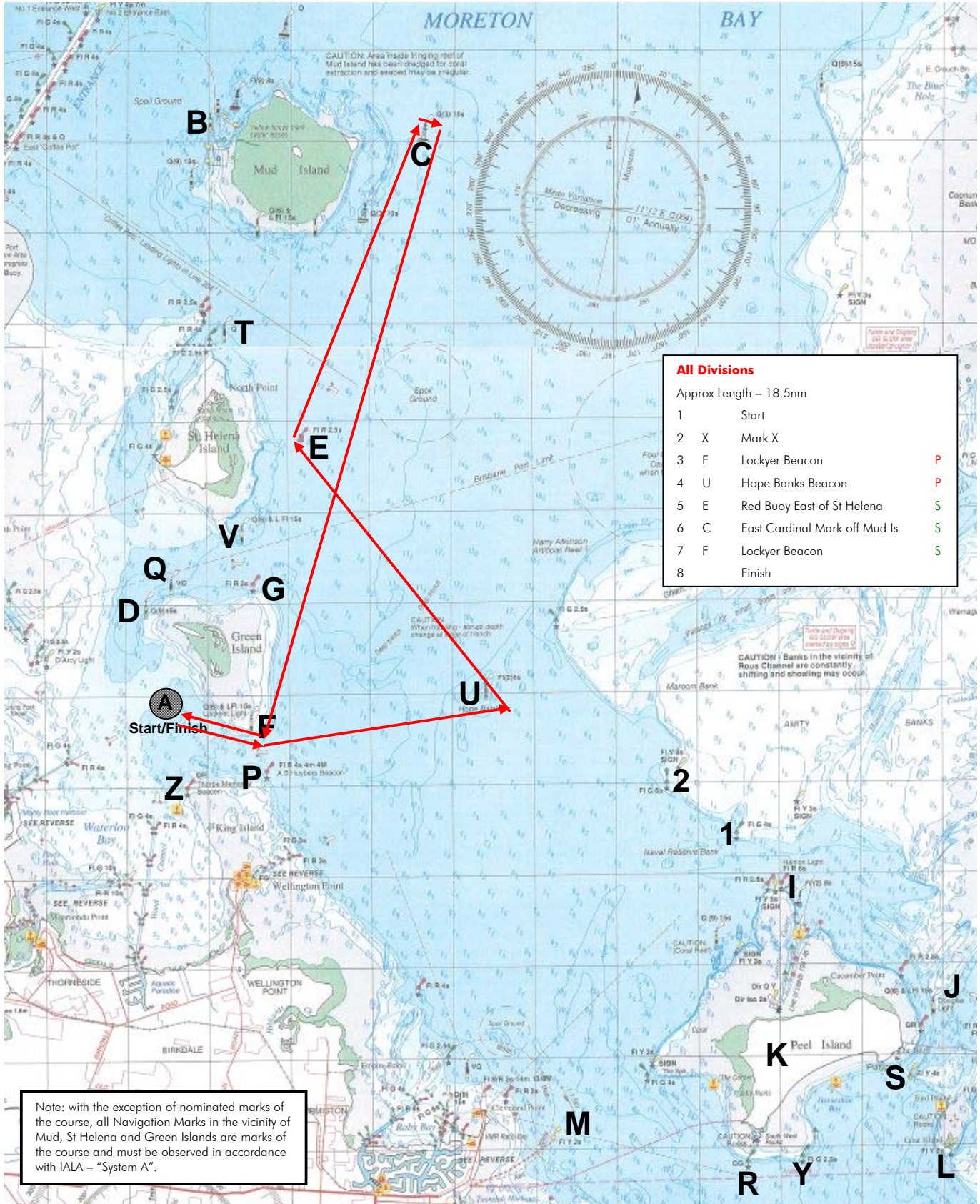
Note: charts illustrated in these sailing instructions show the general racing area – **Not for Navigation**

RQYS Division Yachts – Course G



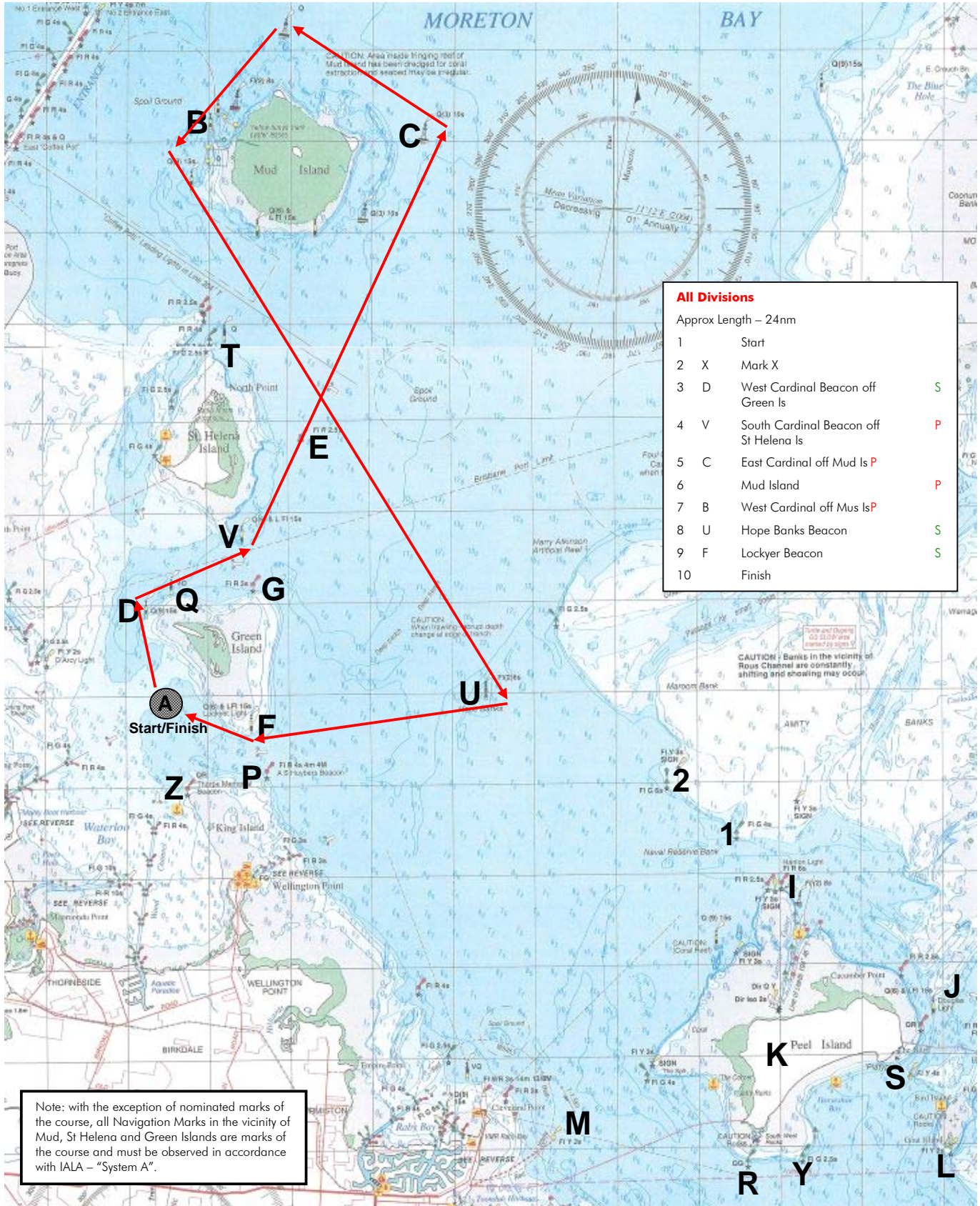
Note: charts illustrated in these sailing instructions show the general racing area – **Not for Navigation**

RQYS Division Yachts – Course H



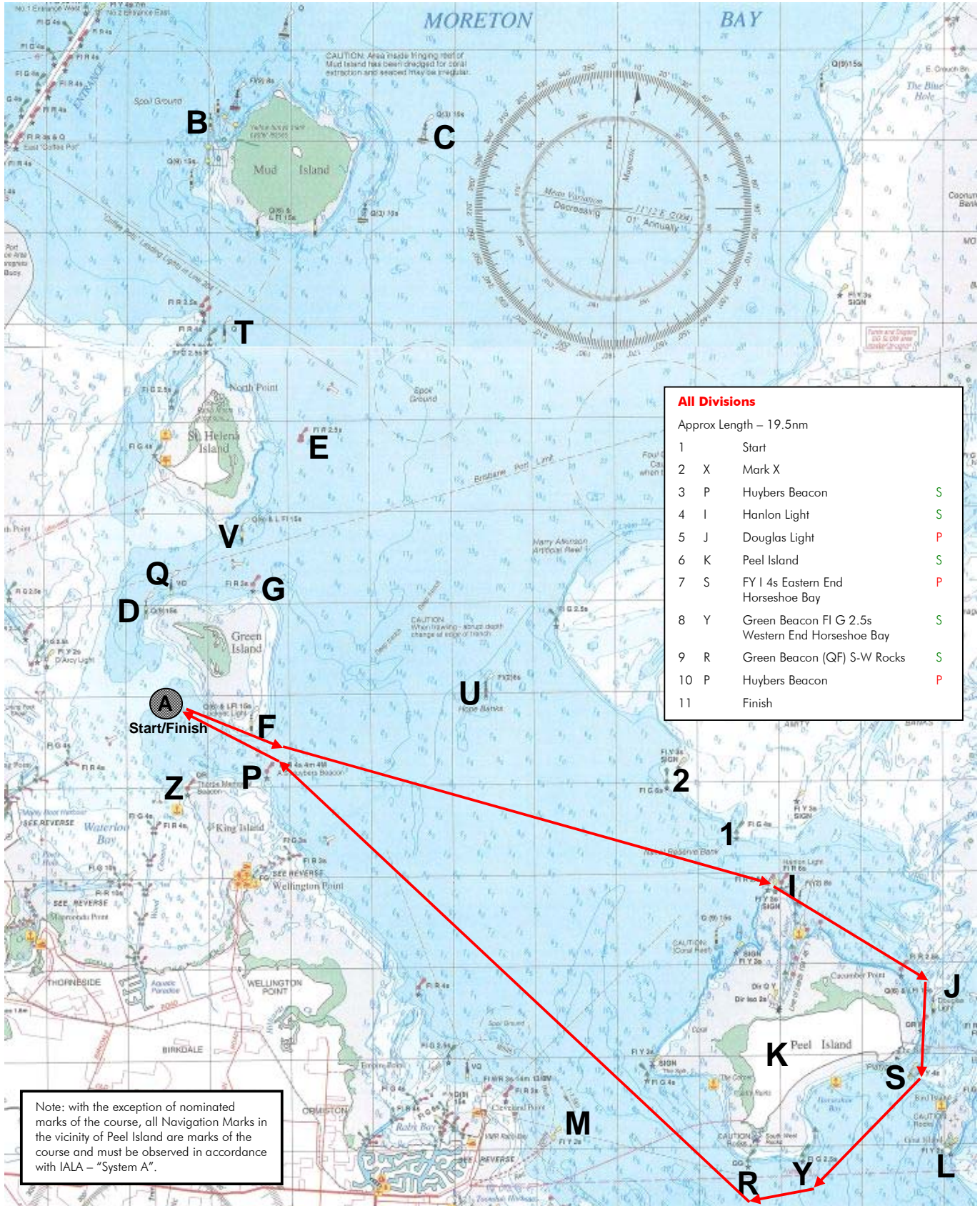
Note: charts illustrated in these sailing instructions show the general racing area – **Not for Navigation**

RQYS Division Yachts – Course I



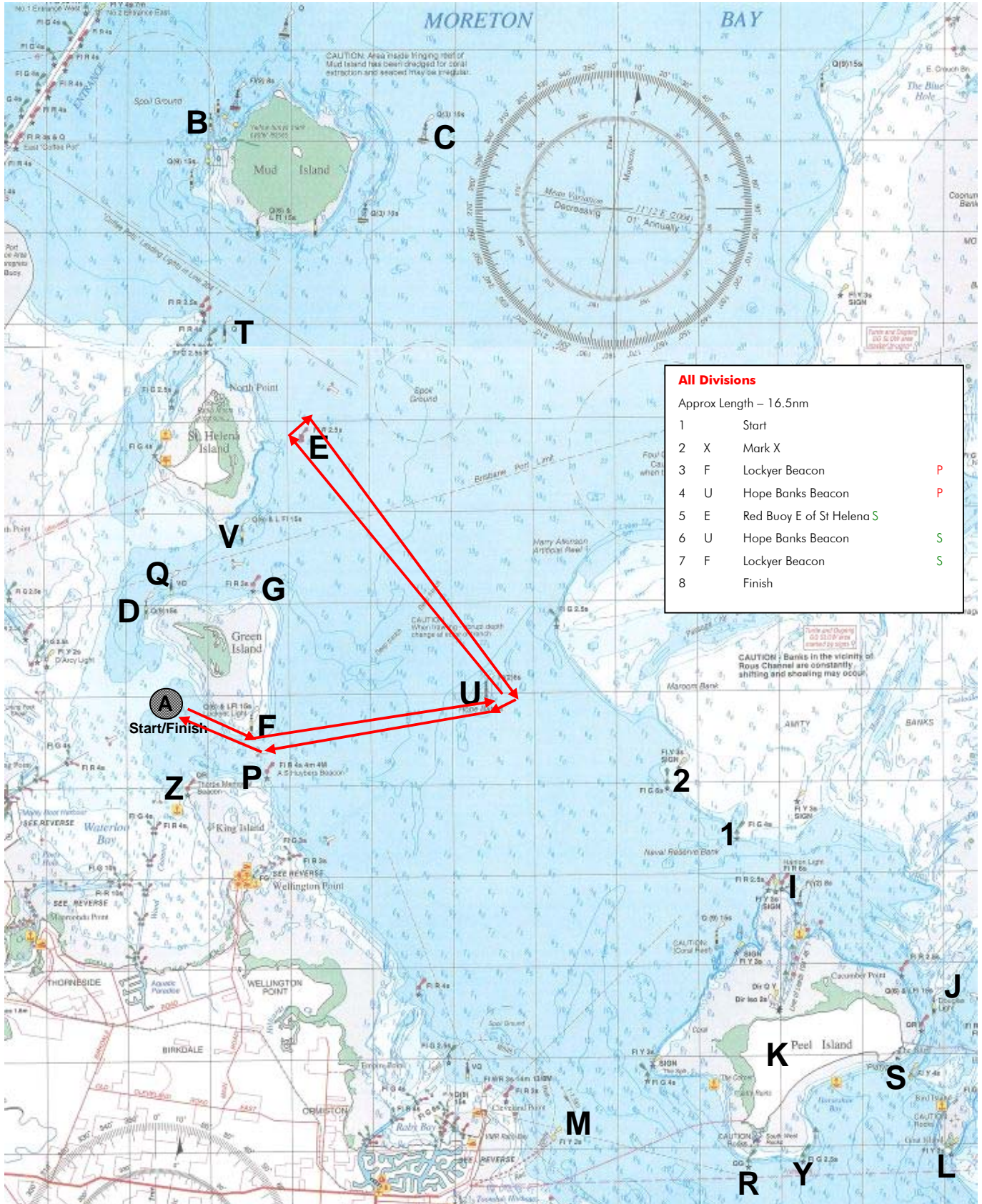
Note: charts illustrated in these sailing instructions show the general racing area – **Not for Navigation**

RQYS Division Yachts – Course J



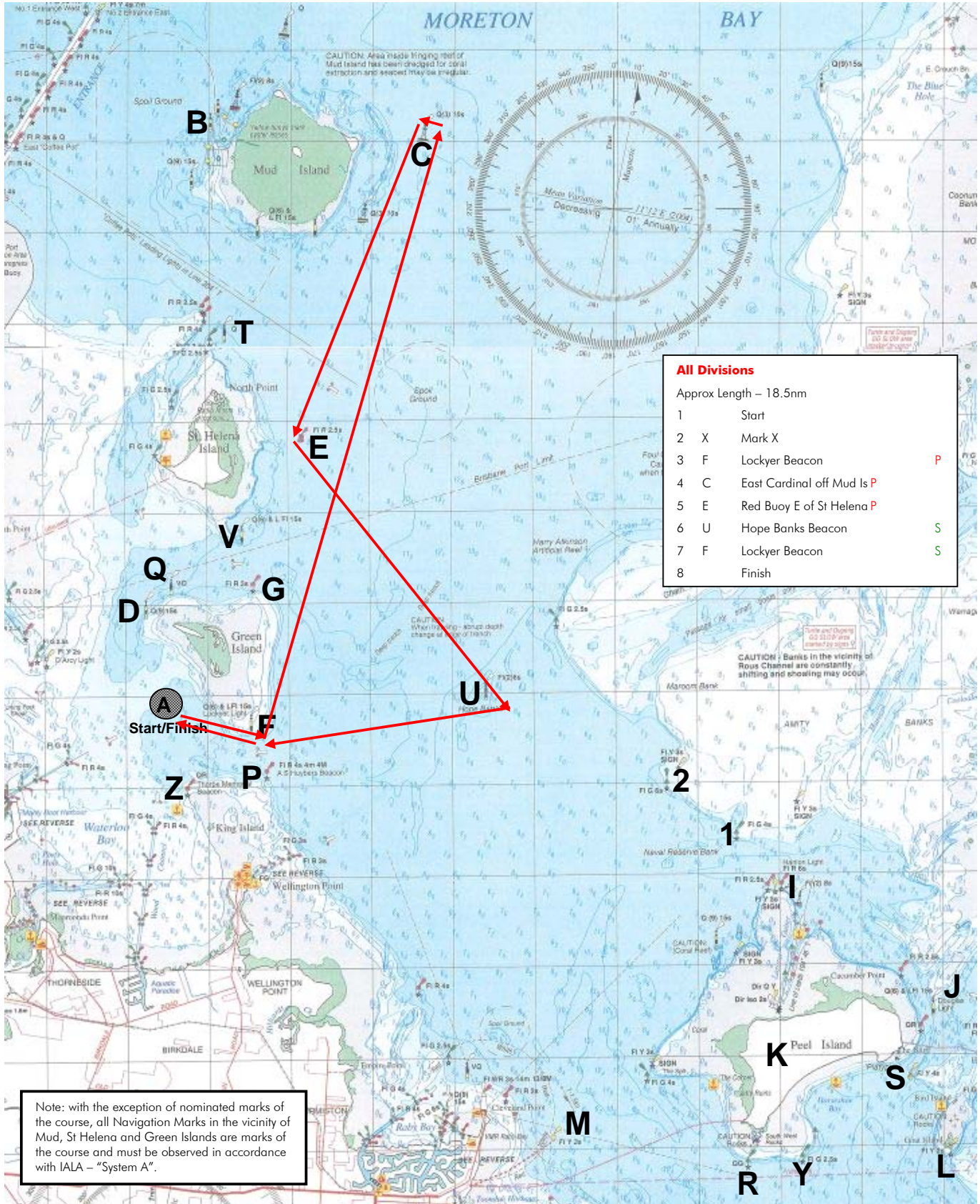
Note: charts illustrated in these sailing instructions show the general racing area – **Not for Navigation**

RQYS Division Yachts – Course K



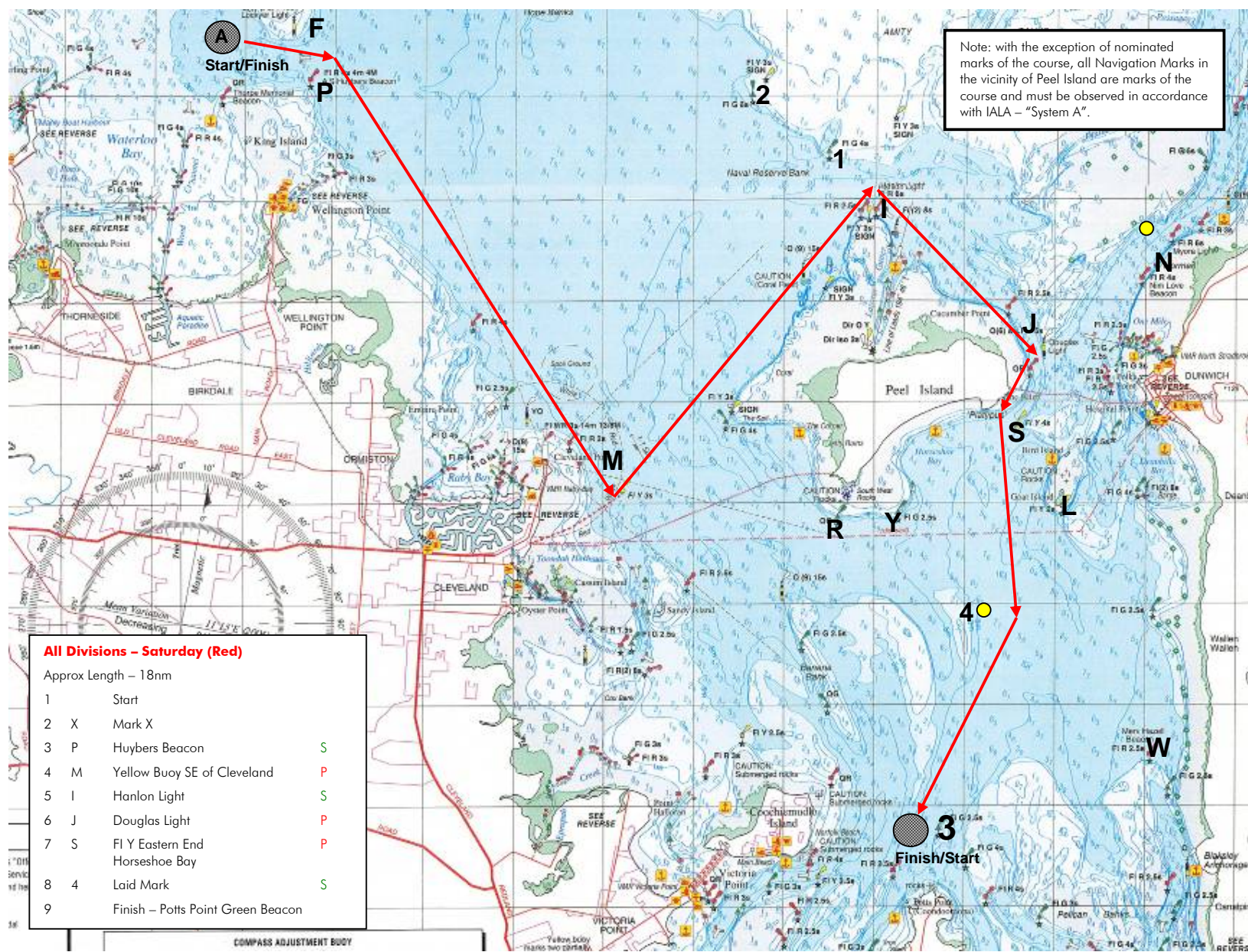
Note: charts illustrated in these sailing instructions show the general racing area – **Not for Navigation**

RQYS Division Yachts – Course L



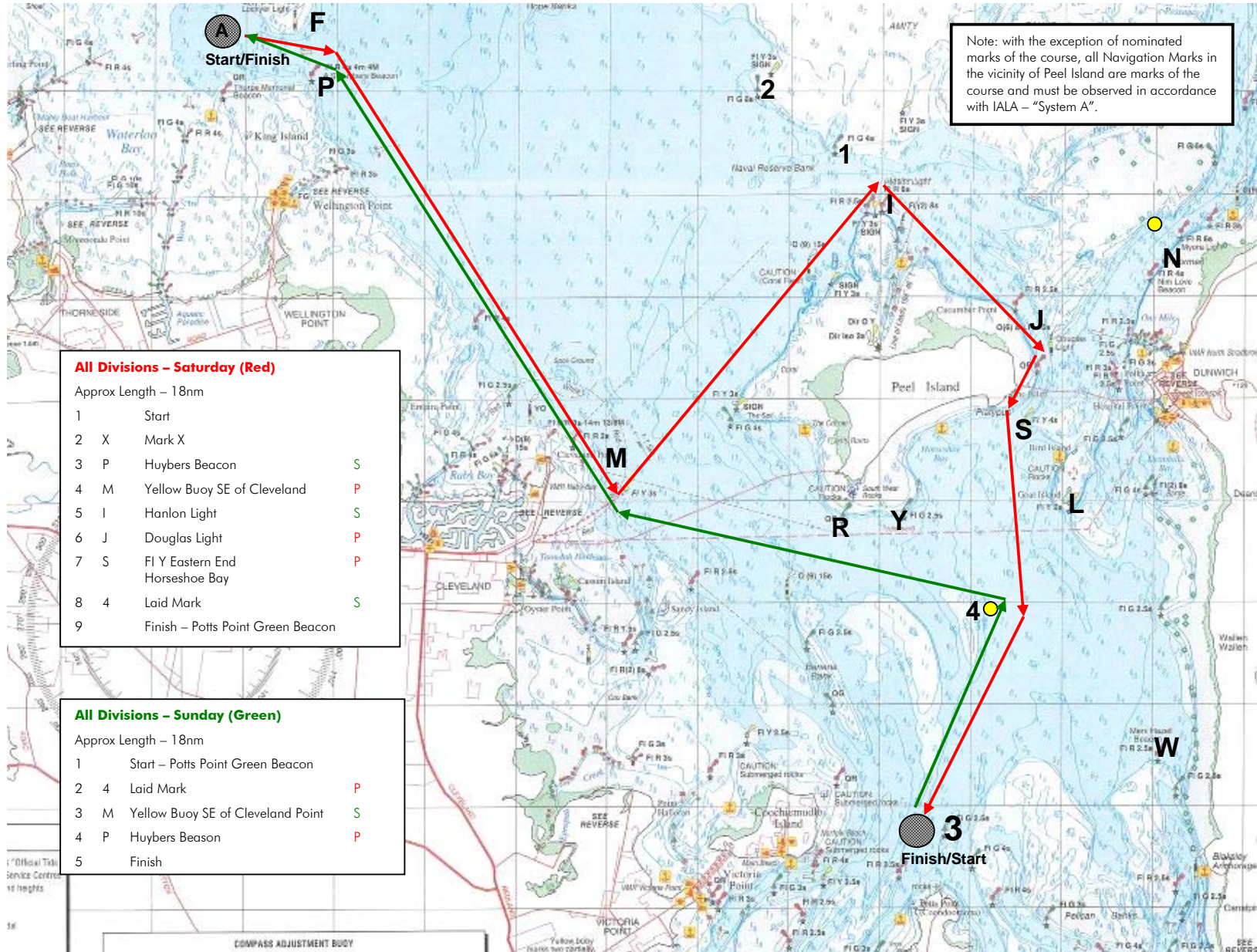
Note: charts illustrated in these sailing instructions show the general racing area – **Not for Navigation**

RQYS Division Yachts – Goodwill Cup Course



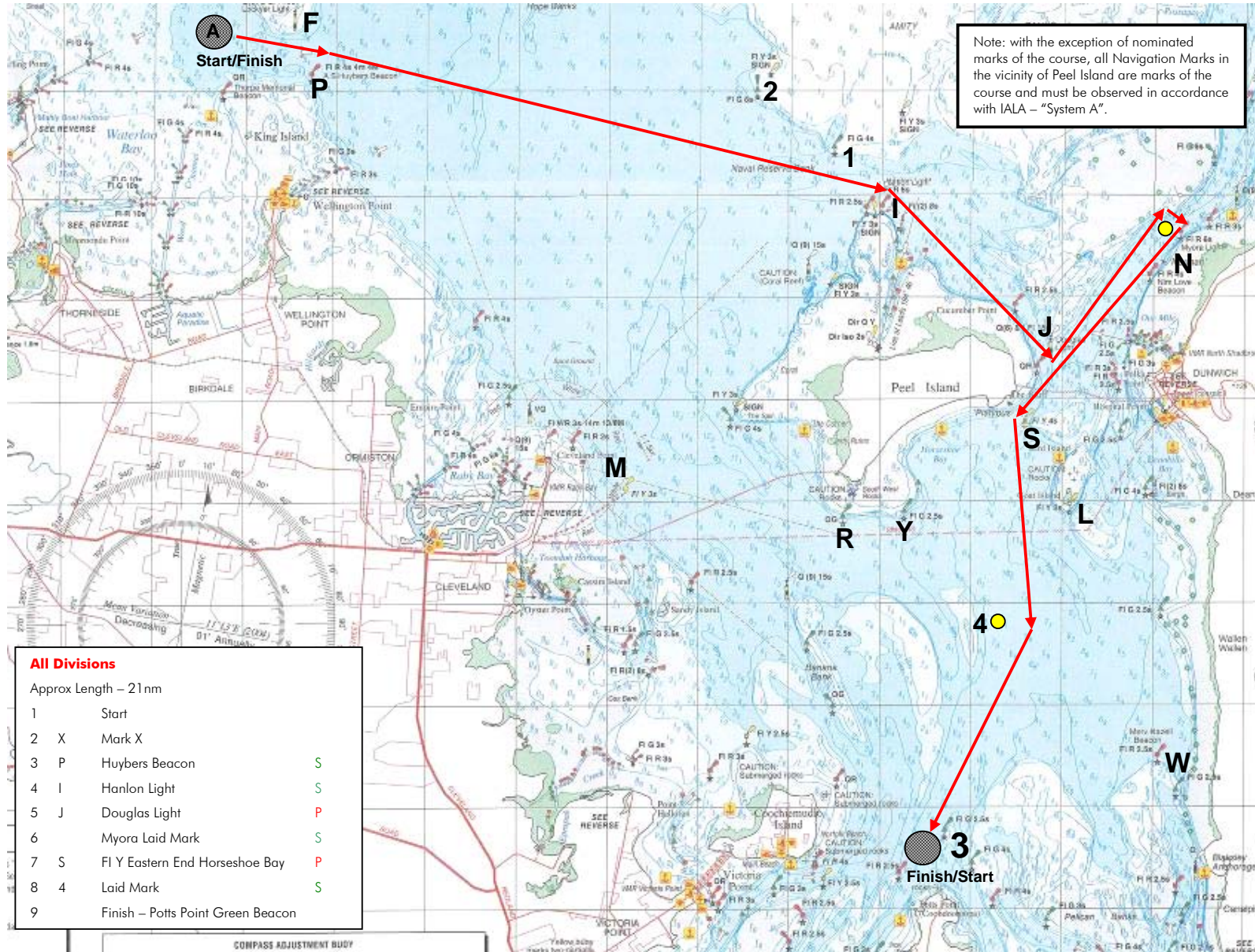
Note: charts illustrated in these sailing instructions show the general racing area – **Not for Navigation**

RQYS Division Yachts – Canaipa Cup Course



Note: charts illustrated in these sailing instructions show the general racing area – **Not for Navigation**

RQYS Division Yachts – Myora Cup Course



Note: charts illustrated in these sailing instructions show the general racing area – **Not for Navigation**